

June 2014

Bulletin #8

Jobs in Metro Vancouver 2011

Statistics Canada National Household Survey

This bulletin provides an overview of the jobs held in Metro Vancouver based on data captured by Statistics Canada's 2011 National Household Survey.

Included in this bulletin is information on:

1. Jobs and Distribution Within Metro Vancouver
2. Job Growth 2001-2011
3. Jobs by Industry Sector
4. Job Distribution and Resident Labour Force Within Metro Subregions



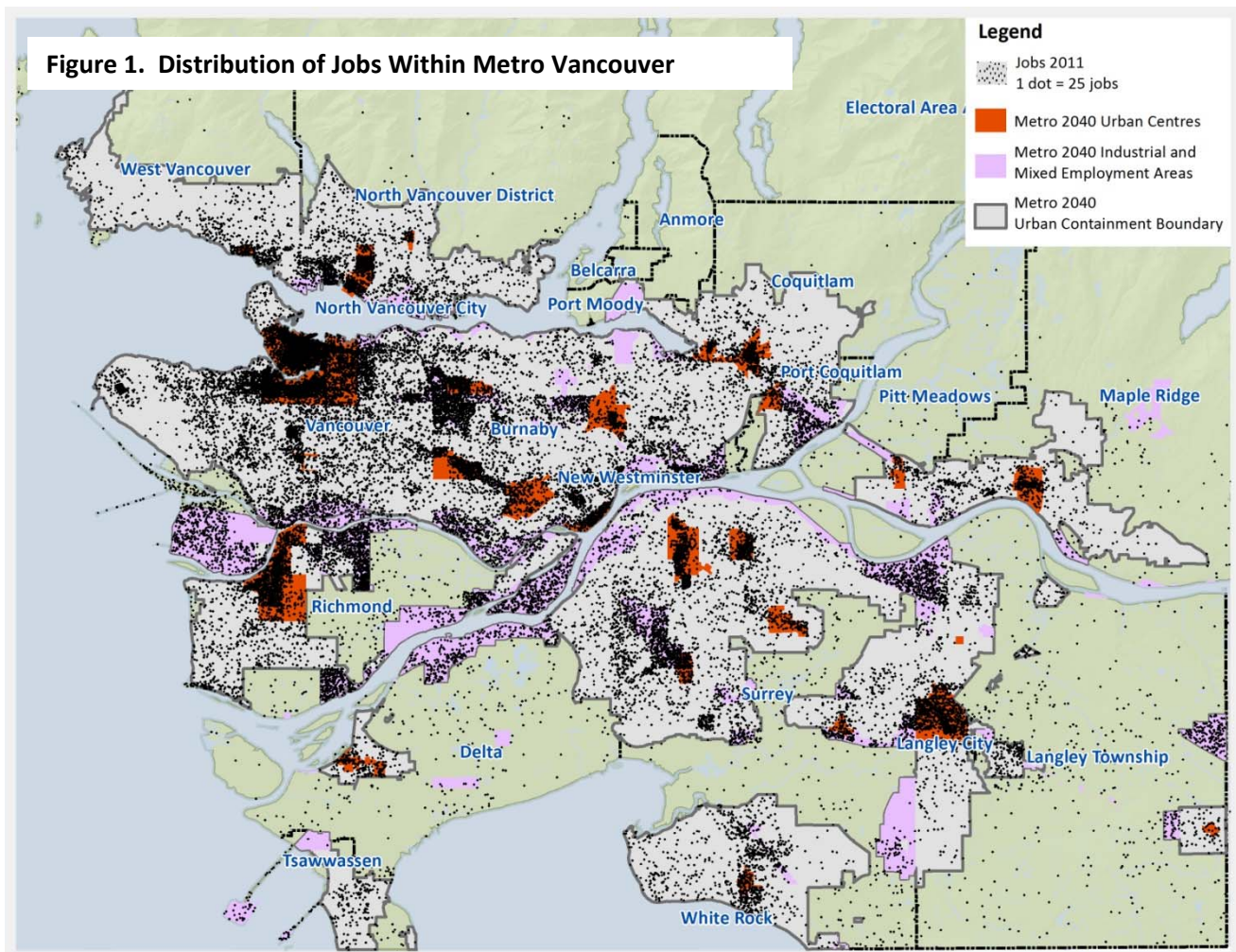
Jobs and Distribution Within Metro Vancouver

Statistics Canada's 2011 National Household Survey (NHS) estimates that there were 1,186,000 jobs in Metro Vancouver in 2011. About 97% of these were held by Metro residents, with the remaining 3% held by residents living outside the region – primarily in the Fraser Valley Regional District, (2.3%), but also in Squamish, Victoria and the Sunshine Coast.

Statistics Canada classifies jobs as having a usual / fixed place of work, working at home, or having no fixed work location. For about 80% of the jobs (943,000), there is a usual place of work or fixed location where people commute to each day. Another 7.5% of Metro Vancouver jobs (88,740) were held by residents working from home, while 13% (154,400) of the jobs had no fixed workplace location.

Table 1 shows the number of fixed place and at-home jobs located in Metro Vancouver municipalities. The largest share of regional employment is within the City of Vancouver (34%), reflecting the city's historical status as the downtown business core for the region. This share is substantially larger than the share of regional jobs located in the other larger municipalities of Surrey (13%), Burnaby (12%) and Richmond (11%).

With advancing technology it is generally expected that the share of at-home jobs will increase. However, the Metro Vancouver percentage of work-at-home jobs has declined slightly from 8% 2001



to 7.5% in 2011. Within each municipality, the percent of jobs held by residents working from home varies from 4% to as high as 84%.

Jobs having no fixed workplace primarily include jobs in sectors such as construction and transportation, and these jobs can be located in any or many locations on a given day. Generally, the no-fixed location jobs serve the population and businesses located throughout the region (note: some Metro Vancouver publications may include an allocation of no-fixed jobs among municipalities based on each municipality's respective share of regional population and jobs). The proportion of no fixed place of work has increased over the past 10 years – from 10.3% in 2001 to 13% in 2011 due to growth in the construction sector.

Table 1. Jobs Located Within Metro Vancouver Municipalities
Usual / Fixed Place of Work and Work at Home (Excluding jobs with no-fixed location)

	Total of Status	Place of Work	Municipal Share of Regional Jobs	Usual place of work	Worked at home	At Home Share of Total Municipal Jobs
Metro Vancouver	1,032,165		100%	943,420	88,745	9%
Anmore	235		0%	65	165	70%
Belcarra	200		0%	160	40	20%
Bowen Island	920		0%	550	375	41%
Burnaby	120,890		12%	114,605	6,285	5%
Coquitlam	38,885		4%	34,290	4,590	12%
Delta	41,990		4%	38,260	3,730	9%
Langley City	15,465		1%	14,895	565	4%
Langley Township	44,370		4%	39,225	5,145	12%
Lions Bay	215		0%	40	180	84%
Maple Ridge	19,200		2%	16,580	2,620	14%
New Westminister	24,405		2%	22,550	1,855	8%
North Vancouver City	26,835		3%	24,960	1,885	7%
North Vancouver District	23,695		2%	18,725	4,980	21%
Pitt Meadows	4,790		0%	4,125	665	14%
Port Coquitlam	19,695		2%	18,020	1,675	9%
Port Moody	7,350		1%	5,890	1,455	20%
Richmond	109,945		11%	102,580	7,365	7%
Surrey	139,250		13%	126,015	13,230	10%
Tsawwassen First Nation	170		0%	140	30	18%
Vancouver	352,715		34%	325,830	26,890	8%
West Vancouver	16,170		2%	12,845	3,330	21%
White Rock	5,915		1%	4,770	1,150	19%
UBC UEL Electoral Area A	18,775		2%	18,250	525	3%

Source" Statistics Canada National Household Survey 2011

One of the primary objectives in Metro Vancouver's regional growth strategy, *Metro Vancouver 2040: Shaping our Future (Metro 2040)*, is to focus employment within *Metro 2040* designated Urban Centres and to maintain the viability of *Metro 2040* designated Industrial and Mixed Employment areas. In 2011, about 40% of jobs in the region were located within the designated Urban Centres, while 23% of jobs were located within the designated Industrial and Mixed Employment areas.

Job Growth

As a measure of job growth within the region, Table 2 compares the municipal distribution of fixed and at-home jobs from the 2011 NHS and the 2001 Census (See endnote regarding data comparability between the 2001 and 2011 sources). The data suggests that the number of fixed place jobs increased by about 130,000 over the past 10 years. Growth was largely within the cities of Vancouver and Surrey, with each taking about 30% of regional growth. However, for Vancouver, this percentage represents a decreasing share, while Surrey's represents an increased share of regional employment.

Although the City of Vancouver maintains a large share of regional jobs and jobs growth, the 10 year growth pattern indicates a moderate shift in the subregional distribution of employment. As the majority of employment growth is within population serving sectors, this shift reflects the relative distribution of population and population growth within the region.

Table 2. Distribution of Job Growth Among Metro Vancouver Municipalities 2001-2011

	2001		2011		Growth 2001-2011	
	Fixed & At Home	Regional Share	Fixed & At Home	Regional Share	Absolute Growth	Share of Metro Growth
Metro Vancouver	901,780	100%	1,032,165	100%	130,400	100%
Anmore	180	0.0%	235	0.0%	100	0%
Belcarra	105	0.0%	200	0.0%	100	0%
Bowen Island	795	0.1%	920	0.1%	100	0%
Burnaby	107,965	12.0%	120,890	11.7%	12,900	10%
Coquitlam	33,495	3.7%	38,885	3.8%	5,400	4%
Delta	42,240	4.7%	41,990	4.1%	-250	0%
UBC UEL Area A	14,350	1.6%	18,775	1.8%	4,400	3%
Langley Township	12,380	1.4%	15,465	1.5%	3,100	2%
Langley City	34,445	3.8%	44,370	4.3%	9,900	8%
Lions Bay	150	0.0%	215	0.0%	100	0%
Maple Ridge	17,345	1.9%	19,200	1.9%	1,900	1%
New Westminster	26,000	2.9%	24,405	2.4%	-1,600	-1%
North Vancouver District	21,715	2.4%	23,310	2.3%	1,595	1%
North Vancouver City	24,090	2.7%	26,710	2.6%	2,620	2%
Pitt Meadows	3,210	0.4%	4,790	0.5%	1,600	1%
Port Coquitlam	16,010	1.8%	19,695	1.9%	3,700	3%
Port Moody	5,050	0.6%	7,350	0.7%	2,300	2%
Richmond	104,530	11.6%	109,945	10.7%	5,400	4%
Surrey	101,995	11.3%	139,150	13.5%	37,200	29%
Vancouver	312,660	34.7%	352,385	34.1%	39,700	30%
West Vancouver	14,245	1.6%	13,615	1.3%	-600	0%
White Rock	5,495	0.6%	5,915	0.6%	400	0%
UBC UEL Area A	14,350	1.6%	18,775	1.8%	4,400	3%

Source: Statistics Canada National Household Survey 2011; Census of Canada 2001

Jobs by Industry Sector

Table 3 shows the distribution of Metro Vancouver’s fixed place and at-home jobs by industry sectors, comparing the 2011 NHS estimates with the 2001 Census. No particular sector dominates employment in the region, however, the Retail Trade sector remains the most prominent and relatively stable sector in the region with 11.7% of jobs in 2011.

Sectors showing the largest share of job growth over the past 10 years include Professional/Technical (19% / +24,500 jobs), Health Care/Social Assistance (16%, +20,000 jobs) and Education (11%, +15,000 jobs). Sectors showing a decrease in jobs over the past 10 years include Manufacturing (-17,500) and Agriculture/Forestry/Fishing (-1,500).

The municipal distribution of jobs by industry sector in 2011 is shown in the table in Appendix A.

Table 3: Metro Vancouver Jobs by Industry (NAICS) Classification in 2001 and 2011

Includes only jobs and Labour Force having a fixed place of work or work at home.

	2001	2011	Growth	Share of Metro Job Growth
Metro Vancouver	901,780	1,032,165	130,385	100.0%
Retail trade	106,840	120,785	13,945	10.7%
Health care and social assistance	92,290	112,880	20,590	15.8%
Professional, scientific and technical services	81,480	106,030	24,550	18.8%
Accommodation and food services	73,285	85,525	12,240	9.4%
Educational services	66,910	81,690	14,780	11.3%
Manufacturing	91,705	74,240	-17,465	-13.4%
Finance and insurance	51,215	58,000	6,785	5.2%
Public administration	40,880	55,505	14,625	11.2%
Wholesale trade	50,480	53,440	2,960	2.3%
Other services (except public administration)	45,375	52,895	7,520	5.8%
Transportation and warehousing	51,740	51,115	-625	-0.5%
Construction	23,640	35,690	12,050	9.2%
Administrative and support, waste management	30,135	35,420	5,285	4.1%
Information and cultural industries	36,190	35,255	-935	-0.7%
Real estate and rental and leasing	22,145	28,240	6,095	4.7%
Arts, entertainment and recreation	18,835	24,295	5,460	4.2%
Agriculture, forestry, fishing and hunting	10,135	8,660	-1,475	-1.1%
Utilities	5,900	6,930	1,030	0.8%
Mining, quarrying, and oil and gas extraction	1,775	3,950	2,175	1.7%
Management of companies and enterprises	825	1,620	795	0.6%

Source: Statistics Canada, 2001 Census & 2011 National Household Survey

Job Distribution and Resident Labour Force within Metro Subregions

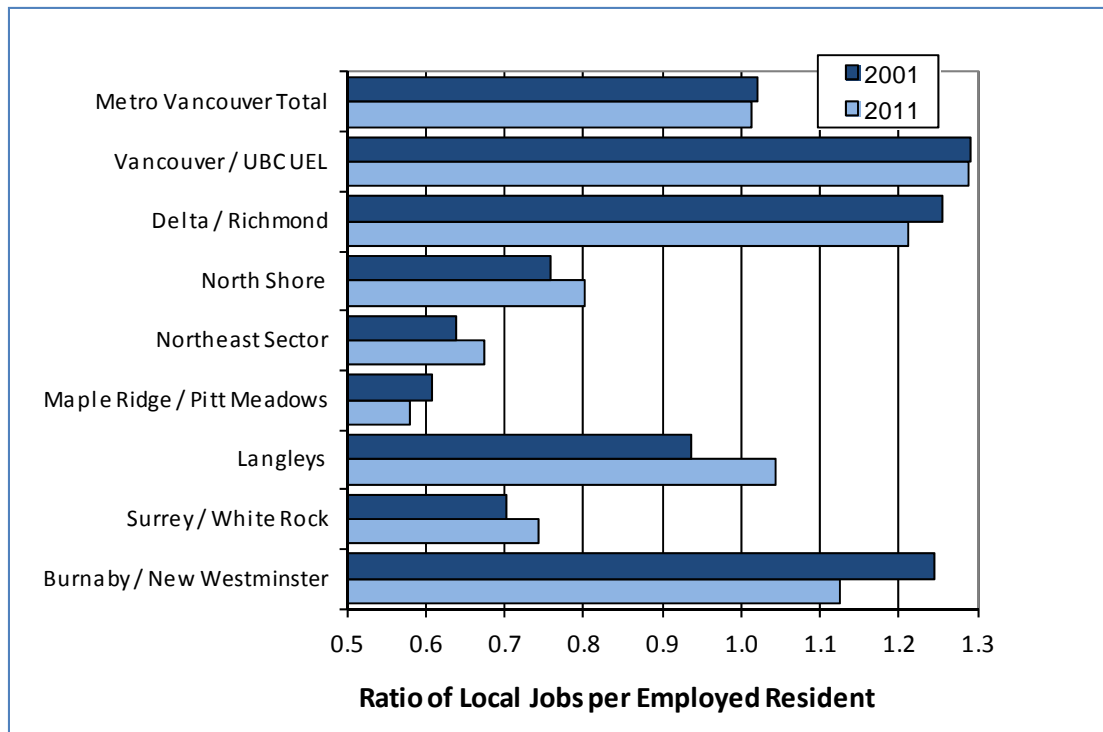
The relationship between the number of jobs and the resident labour force located within a subregion indicates the relative balance in local business and residential development, and the number of residents who live and work within their subregion. Historically, there has been a large difference among subregions in their ratio of jobs to labour force. The core areas of the region, such as downtown Vancouver, Burnaby / New Westminster, have a long established business / jobs base and have maintained a high number of jobs-in relation to the number of residents (employed labour force). Other areas have been developing primarily as residential communities with modest business growth. However, comparing the 2011 and 2001 data suggests there is a balancing trend as

subregions (with the exception of Maple Ridge / Pitt Meadows) moved closer to a one-to-one ratio over the past 10 years. As the majority of job growth is in the population serving sectors, the job distribution has been shifting to serve that residential demand.

As shown in Figure 2, the Burnaby / New Westminster subregion, having a high jobs ratio, moved down from a ratio of 1.25 jobs per employed resident in 2001 to 1.13 in 2011. Alternatively, the Langleys increased their ratio from 0.94 to 1.04. The Surrey subregion had the largest share of employment growth and significantly increased their regional share of employment. However, Surrey also had very high population growth such that their ratio increased modestly from .7 to .75.

Figure 2: Ratio of Jobs to Employed Resident in Metro Vancouver Subregions in 2001 and 2011

Includes only jobs and Labour Force having a fixed place of work or work at home.



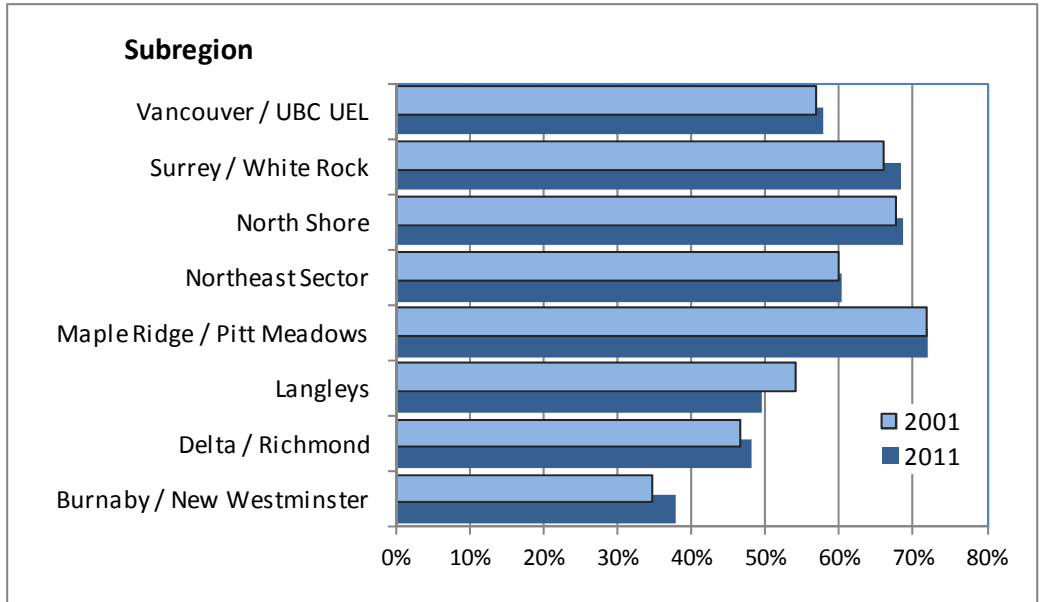
Source: Statistics Canada, 2011 National Household Survey and 2001 Census

A better balance of jobs and resident labour force can provide more opportunities for residents to live and work within their subregion, relieving the commuting burden and having a significant impact on regional transportation systems. Over the past 10 years the region has seen a modest increase in the share of residents working within their own subregion.

Overall, the percentage of Metro Vancouver residents working in their own subregion increased from 53.8% in 2001 to 55.3% in 2011. This trend was mirrored in all subregions other than the Langleys. This share was highest on the North Shore where 68.6% of jobs were filled by local residents. Increases were largest in the Burnaby / New Westminster (+3%) and Surrey /White Rock (+2.5%). See Appendix B for full municipal data on local jobs occupied by residents of the same subregional area.

Figure 3: Jobs Filled by Local Residents by Subregion, 2001 and 2011

Includes only jobs and Labour Force having a fixed place of work or work at home



Source: Statistics Canada, 2011 National Household Survey and 2001 Census

Conclusions

Metro Vancouver has maintained a strong rate of job growth over the past 10 years, with jobs growth largely related to serving the existing and growing population. The population serving nature of job growth is shifting the job distribution from the historic concentration in the core areas of the region toward more of a balance with the subregional populations. This trend is consistent with *Metro 2040* objectives to balance of jobs and housing throughout the region, thereby promoting more complete communities and reducing regional commuting by allowing more transportation options within subregions.

**Note: The 2011 National Household Survey uses different data collection sources with two different methodologies, therefore the difference should not be considered an accurate measure of change between the 2006 Census and other Census years. In this document, the difference between 2001 Census data and the 2011 National Household survey are referenced as an indicator of change, not an accurate measure of change.*

Appendix A: 2011 NHS - Jobs by Industry Classification by Municipality, Metro Vancouver

Jobs by Industry Classification	Metro Vancouver		Vancouver		Electoral Area A		Burnaby		New Westminster		Pitt Meadows		Maple Ridge	
Total - Industry Classification	1,032,165		352,385		18,775		120,890		24,405		4,790		19,200	
11 Agriculture, forestry, fishing and hunting	8,660	1%	815	0%	50	0%	320	0%	95	0%	465	10%	355	2%
21 Mining and oil and gas extraction	3,950	0%	2,895	1%	0	0%	210	0%	0	0%	0	0%	0	0%
22 Utilities	6,930	1%	1,635	0%	0	0%	2,850	2%	0	0%	0	0%	0	0%
23 Construction	35,690	3%	8,265	2%	360	2%	4,225	3%	680	3%	170	4%	940	5%
31-33 Manufacturing	74,240	7%	12,165	3%	140	1%	10,160	8%	1,265	5%	420	9%	1,280	7%
41 Wholesale trade	53,440	5%	10,935	3%	165	1%	8,545	7%	445	2%	120	3%	695	4%
44-45 Retail trade	120,785	12%	33,210	9%	315	2%	14,550	12%	2,310	9%	960	20%	2,750	14%
48-49 Transportation & warehousing	51,115	5%	10,480	3%	70	0%	4,160	3%	855	4%	205	4%	190	1%
51 Information & cultural industries	35,255	3%	15,375	4%	185	1%	9,680	8%	685	3%	125	3%	230	1%
52 Finance & insurance	58,000	6%	27,090	8%	110	1%	6,505	5%	1,160	5%	215	4%	835	4%
53 Real estate & rental & leasing	28,240	3%	11,800	3%	105	1%	2,590	2%	480	2%	80	2%	425	2%
54 Professional, scientific & technical services	106,030	10%	52,665	15%	2,290	12%	12,550	10%	1,830	7%	145	3%	950	5%
55 Management of companies & enterprises	1,620	0%	680	0%	0	0%	170	0%	0	0%	0	0%	0	0%
56 Admin & support, waste management & remediation	35,420	3%	13,705	4%	125	1%	4,385	4%	815	3%	75	2%	535	3%
61 Educational services	81,690	8%	19,980	6%	12,140	65%	10,275	8%	2,370	10%	265	6%	1,835	10%
62 Health care & social assistance	112,880	11%	44,415	13%	1,270	7%	9,355	8%	6,145	25%	345	7%	3,315	17%
71 Arts, entertainment & recreation	24,295	2%	9,640	3%	340	2%	1,960	2%	695	3%	525	11%	425	2%
72 Accommodation & food services	85,525	8%	35,845	10%	540	3%	6,665	6%	1,640	7%	350	7%	1,810	9%
81 Other services (except public admin)	52,895	5%	18,600	5%	310	2%	6,490	5%	1,250	5%	160	3%	1,340	7%
91 Public administration	55,505	5%	22,185	6%	255	1%	5,245	4%	1,650	7%	130	3%	1,265	7%
Jobs by Industry Classification	Metro Vancouver		Surrey CY		White Rock CY		Langley DM		Langley CY		Richmond CY		Delta	
Total - Industry Classification	1,032,165		139,150		5,915		44,370		15,465		109,945		41,990	
11 Agriculture, forestry, fishing and hunting	8,660	1%	2,110	2%	0	0%	2,090	5%	185	1%	615	1%	1,155	3%
21 Mining and oil and gas extraction	3,950	0%	130	0%	0	0%	40	0%	40	0%	150	0%	80	0%
22 Utilities	6,930	1%	1,515	1%	0	0%	140	0%	0	0%	155	0%	105	0%
23 Construction	35,690	3%	7,130	5%	220	4%	1,960	4%	695	4%	3,250	3%	1,725	4%
31-33 Manufacturing	74,240	7%	11,735	8%	95	2%	5,365	12%	1,825	12%	12,135	11%	9,165	22%
41 Wholesale trade	53,440	5%	7,630	5%	155	3%	3,095	7%	805	5%	9,240	8%	4,235	10%
44-45 Retail trade	120,785	12%	19,300	14%	585	10%	7,125	16%	2,730	18%	13,460	12%	3,300	8%
48-49 Transportation & warehousing	51,115	5%	7,895	6%	35	1%	2,125	5%	580	4%	14,990	14%	4,365	10%
51 Information & cultural industries	35,255	3%	2,245	2%	85	1%	450	1%	50	0%	2,625	2%	415	1%
52 Finance & insurance	58,000	6%	6,670	5%	295	5%	1,585	4%	515	3%	5,005	5%	990	2%
53 Real estate & rental & leasing	28,240	3%	3,250	2%	235	4%	1,020	2%	260	2%	2,550	2%	870	2%
54 Professional, scientific & technical services	106,030	10%	8,590	6%	530	9%	2,305	5%	560	4%	8,940	8%	2,260	5%
55 Management of companies & enterprises	1,620	0%	115	0%	0	0%	55	0%	20	0%	265	0%	75	0%
56 Admin & support, waste management & remediation	35,420	3%	3,950	3%	100	2%	935	2%	560	4%	4,655	4%	1,075	3%
61 Educational services	81,690	8%	12,160	9%	275	5%	3,320	7%	655	4%	4,570	4%	2,625	6%
62 Health care & social assistance	112,880	11%	15,085	11%	1,960	33%	4,425	10%	1,725	11%	6,420	6%	3,375	8%
71 Arts, entertainment & recreation	24,295	2%	2,025	1%	150	3%	890	2%	905	6%	2,260	2%	575	1%
72 Accommodation & food services	85,525	8%	9,360	7%	745	13%	3,765	8%	1,695	11%	10,435	9%	2,295	5%
81 Other services (except public admin)	52,895	5%	7,775	6%	230	4%	2,355	5%	1,145	7%	4,105	4%	1,915	5%
91 Public administration	55,505	5%	10,485	8%	195	3%	1,320	3%	525	3%	4,110	4%	1,400	3%

Jobs refers to location of fixed place of work for employed labour force. Excludes "no fixed workplace".

Appendix A: 2011 Census - Jobs by Industry Classification by Municipality, Metro Vancouver

(page 2 of 2)

Jobs by Industry Classification	Metro Vancouver	Coquitlam CY	Port Coquitlam CY	Port Moody CY	Anmore VL	Belcarra VL
Total - Industry Classification	1,032,165	38,885	19,695	7,350	235	200
11 Agriculture, forestry, fishing and hunting	8,660 1%	85 0%	120 1%	0 0%		
21 Mining and oil and gas extraction	3,950 0%	90 0%	20 0%	20 0%		
22 Utilities	6,930 1%	225 1%	0 0%	15 0%		
23 Construction	35,690 3%	2,225 6%	1,020 5%	240 3%		
31-33 Manufacturing	74,240 7%	2,530 7%	2,820 14%	350 5%		
41 Wholesale trade	53,440 5%	3,130 8%	2,165 11%	235 3%		
44-45 Retail trade	120,785 12%	6,890 18%	2,865 15%	905 12%		
48-49 Transportation & warehousing	51,115 5%	1,120 3%	1,690 9%	155 2%		
51 Information & cultural industries	35,255 3%	705 2%	310 2%	205 3%		
52 Finance & insurance	58,000 6%	1,625 4%	465 2%	175 2%		
53 Real estate & rental & leasing	28,240 3%	1,105 3%	415 2%	355 5%		
54 Professional, scientific & technical services	106,030 10%	2,210 6%	1,275 6%	750 10%		
55 Management of companies & enterprises	1,620 0%	35 0%	20 0%	0 0%		
56 Admin & support, waste management & remediation	35,420 3%	1,465 4%	315 2%	215 3%		
61 Educational services	81,690 8%	3,440 9%	1,460 7%	560 8%		
62 Health care & social assistance	112,880 11%	3,895 10%	1,310 7%	1,410 19%		
71 Arts, entertainment & recreation	24,295 2%	1,065 3%	140 1%	180 2%		
72 Accommodation & food services	85,525 8%	3,415 9%	1,490 8%	550 7%		
81 Other services (except public admin)	52,895 5%	1,795 5%	770 4%	520 7%		
91 Public administration	55,505 5%	1,825 5%	1,010 5%	485 7%		

Jobs by Industry Classification	Metro Vancouver	North Vancouver CY	North Vancouver DM	West Vancouver DM	Bowen Island IM	Lions Bay VL
Total - Industry Classification	1,032,165	26,710	23,310	13,615	920	215
11 Agriculture, forestry, fishing and hunting	8,660 1%	70 0%	35 0%	35 0%	0 0%	
21 Mining and oil and gas extraction	3,950 0%	145 1%	50 0%	20 0%	0 0%	
22 Utilities	6,930 1%	20 0%	110 0%	25 0%	0 0%	
23 Construction	35,690 3%	940 4%	1,055 5%	385 3%	95 10%	
31-33 Manufacturing	74,240 7%	755 3%	1,785 8%	145 1%	30 3%	
41 Wholesale trade	53,440 5%	735 3%	715 3%	300 2%	0 0%	
44-45 Retail trade	120,785 12%	3,690 14%	3,000 13%	1,620 12%	65 7%	
48-49 Transportation & warehousing	51,115 5%	870 3%	805 3%	400 3%	65 7%	
51 Information & cultural industries	35,255 3%	690 3%	745 3%	325 2%	20 2%	
52 Finance & insurance	58,000 6%	2,970 11%	895 4%	720 5%	35 4%	
53 Real estate & rental & leasing	28,240 3%	710 3%	825 4%	960 7%	20 2%	
54 Professional, scientific & technical services	106,030 10%	2,835 11%	3,160 14%	1,620 12%	170 18%	
55 Management of companies & enterprises	1,620 0%	30 0%	25 0%	55 0%	0 0%	
56 Admin & support, waste management & remediation	35,420 3%	955 4%	810 3%	480 4%	35 4%	
61 Educational services	81,690 8%	1,350 5%	2,730 12%	1,505 11%	65 7%	
62 Health care & social assistance	112,880 11%	4,685 18%	1,820 8%	1,660 12%	45 5%	
71 Arts, entertainment & recreation	24,295 2%	460 2%	1,030 4%	755 6%	50 5%	
72 Accommodation & food services	85,525 8%	2,010 8%	1,440 6%	955 7%	105 11%	
81 Other services (except public admin)	52,895 5%	1,545 6%	1,470 6%	805 6%	50 5%	
91 Public administration	55,505 5%	1,265 5%	805 3%	875 6%	25 3%	

Jobs refers to location of fixed place of work for employed labour force. Excludes "no fixed workplace".

Appendix B: Municipal Jobs Occupied by Local Residents (Same Subregion), 2001 - 2011

Geographic Area	2001			2011		
	Jobs * #	Jobs filled by local labour force		Jobs * #	Jobs filled by local labour force	
		#	%		#	%
Burnaby	107,980	37,235	34.5	120,890	44,560	36.9
New Westminster	25,995	9,275	35.7	24,405	10,285	42.1
Burnaby / New Westminster	133,975	46,510	34.7	145,295	54,845	37.7
Richmond	104,530	51,240	49.0	109,945	54,910	49.9
Delta	42,240	16,960	40.2	41,990	18,055	43.0
Delta / Richmond	146,770	68,200	46.5	151,935	72,965	48.0
Langley Township	34,445	19,040	55.3	44,370	22,480	50.7
Langley City	12,380	6,320	51.1	15,465	7,065	45.7
Langleys	46,825	25,360	54.2	59,835	29,545	49.4
Pitt Meadows	3,210	2,095	65.3	4,790	2,815	58.8
Maple Ridge	17,345	12,685	73.1	19,200	14,420	75.1
Maple Ridge / Pitt Meadows	20,555	14,780	71.9	23,990	17,235	71.8
Anmore	180	155	86.1	235	190	80.9
Belcarra	n/a	n/a	n/a	n/a	n/a	n/a
Coquitlam	33,495	19,765	59.0	38,885	23,140	59.5
Port Coquitlam	16,005	9,490	59.3	19,695	11,170	56.7
Port Moody	5,050	3,370	66.7	7,350	5,380	73.2
Northeast Sector	54,730	32,780	59.9	66,165	39,880	60.3
Bowen Island	n/a	n/a	n/a	n/a	n/a	n/a
Lions Bay, VL	150	135	90.0	215	195	90.7
North Vancouver City	24,090	14,595	60.6	26,710	16,035	60.0
North Vancouver District	21,715	15,180	69.9	23,310	16,105	69.1
West Vancouver	14,245	10,815	75.9	13,615	10,035	73.7
North Shore	60,200	40,725	67.6	61,545	42,370	68.8
Surrey	101,995	66,475	65.2	139,150	94,280	67.8
White Rock	5,495	4,325	78.7	5,915	4,925	83.3
Surrey / White Rock	107,490	70,800	65.9	145,065	99,205	68.4
Electoral Area A (UBC/UEL)	14,350	9,280	64.7	18,775	12,290	65.5
Vancouver	312,660	176,650	56.5	352,385	202,120	57.4
Vancouver / Electoral Area A	327,010	185,930	56.9	371,160	214,410	57.8
Metro Vancouver Total	901,780	485,085	53.8	1,032,165	570,300	55.3

Note: Data excludes no-fixed workplace and jobs outside Canada.

Source: Statistics Canada, 2011 National Household Survey and 2001 Census