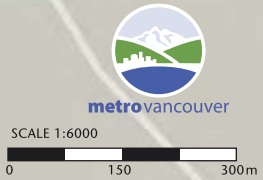


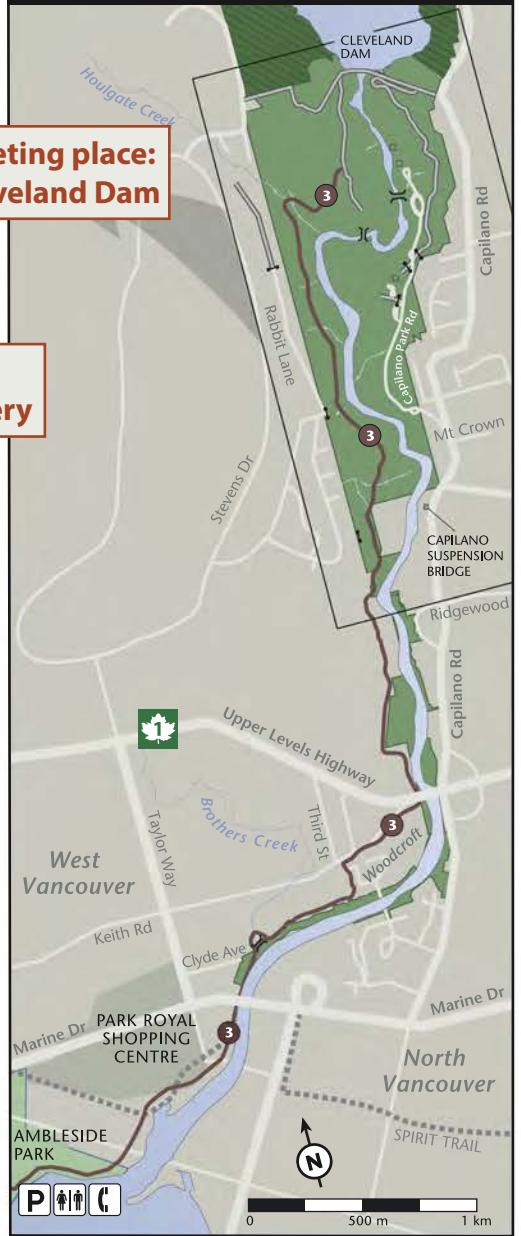
CAPILANO RIVER REGIONAL PARK



- HIKING TRAILS**
- ① Upper Shinglebolt
 - ② Lower Shinglebolt
 - ③ Capilano Pacific
 - ④ Chinook
 - ⑤ Pipeline
 - ⑥ Coho Loop
 - Other Trail
 - ⑦ Giant Fir
 - ⑧ Second Canyon
 - ⑨ Palisades
 - ⑩ Rabbit Lane
 - ⑪ Baden-Powell Trail



CAPILANO PACIFIC TRAIL



- P** Parking
- Toilets
- Telephone
- Picnic Shelter
- Viewpoint
- Hatchery
- Regional Park
- Creek
- Bus Stop
- Drinking Water
- Picnic Area
- Neighbourhood Access
- Gate
- Bridge
- Service Road

HOW TO GET TO THE PARK

From Highway 1 take the Capilano Rd./Grouse Mtn. exit (exit #14) and drive north to the fish hatchery turnout, or continue to the Cleveland Dam parking lot.