



2020 Work Plan Priorities

Heather McNell

GENERAL MANAGER OF REGIONAL PLANNING AND HOUSING SERVICES

Regional Planning Committee Meeting - February 7, 2020

36682937



metrovancouver
SERVICES AND SOLUTIONS FOR A LIVABLE REGION

Committee Terms of Reference

Purpose

The Regional Planning Committee is the standing committee that provides advice and recommendations to the Board on policies, bylaws, plans, programs, budgets and issues related to:

- Metro 2040
- Shaping Growth
- Employment Lands
- Complete Communities
- Agriculture

Regional Planning

- Provide a strategic, long-range, cross-boundary, interdisciplinary lens
- Responsible for developing, implementing and stewarding *Metro 2040*, the regional growth strategy

Core Services

- Data and monitoring
- Policy research
- Convene on planning issues of regional interest
- Advocacy
- Provide a planning resource
- Leadership and Innovation

Regional Planning Portfolios and Reporting

Growth Management and Transportation

Metro 2040

Shaping Growth (UCB, Urban Centres and Corridors)

Complete Communities (Housing, Transportation, Health, Services)

Job Lands (Industrial, Office and Employment)

Electoral Area and Environment

Agriculture (Land and Food Systems)

Environment (Ecological Health and Connectivity)

Electoral Area A

Planning Analytics

Data and Projections

Regional Planning
Committee (L)

Liquid Waste (I)

Housing (I)

Climate Action
Committee (L)

Regional Parks (I)

Electoral Area
Committee (L)

Service to all functions

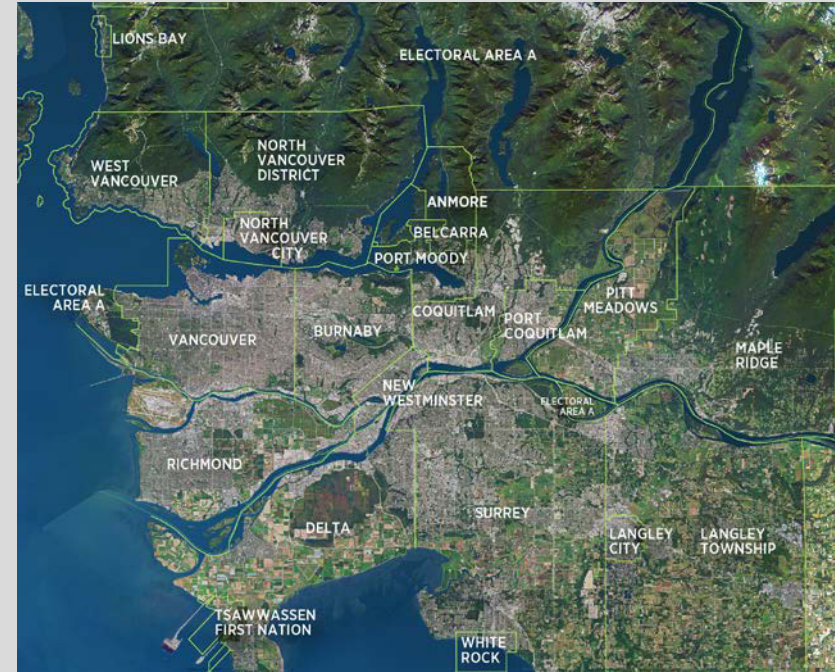
2019 Highlights

- Long Range Growth Scenarios
- Initiated review of Metro 2040 (endorsed engagement plan, initiated several policy reviews)
- Phase II Transit Oriented Affordable Housing Study
- Equity in Regional Planning – Phase I
- Growth Modelling and Projections updated and expanded



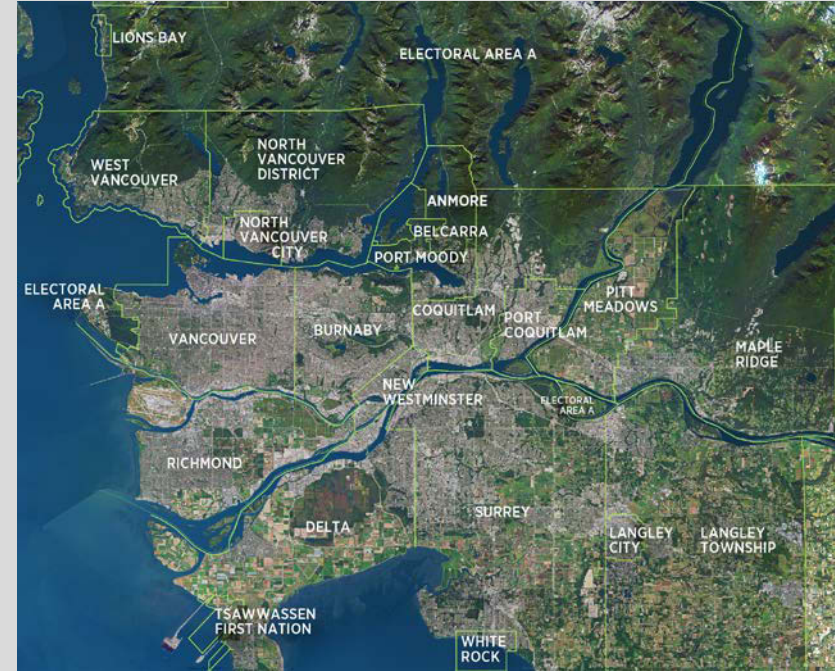
2020 Work Plan Priorities

- Updating *Metro 2040* is the major driver for the Regional Planning work program for 2020
- Integrate with Transport 2050 and Climate 2050
- Complete 11 Policy Reviews; draft amendment policy language



2020 Budget and Work Plan Priorities

- Develop New Integrated Land Use Model – Phase I
- Equity in Regional Growth Management Study – Phase 2
- Frequent Transit Corridor Study (Scott Road)
- Regional Industrial Land Strategy
- Complete 2020 Regional Industrial Land Inventory



2020 Work Plan Priorities

- Where Matters II: Performance Based Land Use for Health and Economic Benefits
- Housing Agreement Template and Access to Homeownership Opportunities Study
- TOAH and H+T update
- Food Flow Study
- Regional Connectivity and Protecting Urban Ecological Areas
- Climate Change Impacts on Invasive Species
- Urban Forestry – Best Practices



Thank you



metrovancouver
SERVICES AND SOLUTIONS FOR A LIVABLE REGION



Walkability Index

METRO 2040 PERFORMANCE MONITORING DASHBOARD

Erin Rennie

SENIOR PLANNER, REGIONAL PLANNING

Regional Planning Committee - February 7, 2020

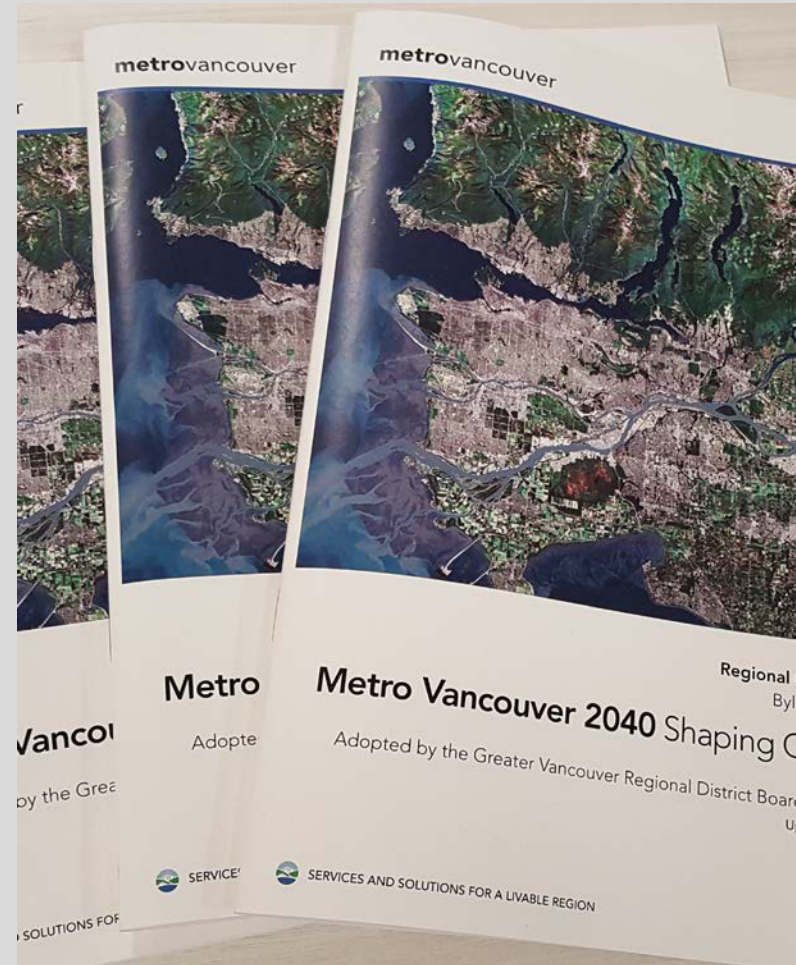
36847423



metrovancover
SERVICES AND SOLUTIONS FOR A LIVABLE REGION

Walkability Index

- **Key Performance Measure**
- **Strategy 4.2** – Develop healthy and complete communities with access to a range of services and amenities
- UBC Health and Community Design Lab (Dr. Frank)
- TransLink co-funded



Access the Walkability Index

1. Go to www.metrovancouver.org/Metro2040
2. Select: Goal 4: Complete Communities
3. Select: Strategy 4.2: Develop Healthy and Complete Communities
4. Select: Walkability Index

Walkability Index: Component Measures

- Residential Density
- Intersection Density
- Land Use Mix
- Commercial Floor Area Ratio
- Sidewalk Completeness
(New in 2016)



Limitations

- **Not Shown:** outside Urban Containment Boundary
- **Indices** cannot be compared year to year
- **Component measures** are comparable over time
- Not all elements of walkability are included (e.g. hills, safety)



Walkability Component: Intersection Density

Street Maps at the Same Scale

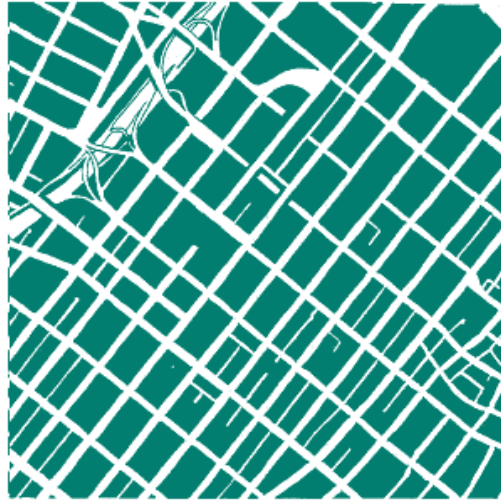
Venice, Italy

1,500 intersections/square mile



Los Angeles, CA

150 intersections/square mile



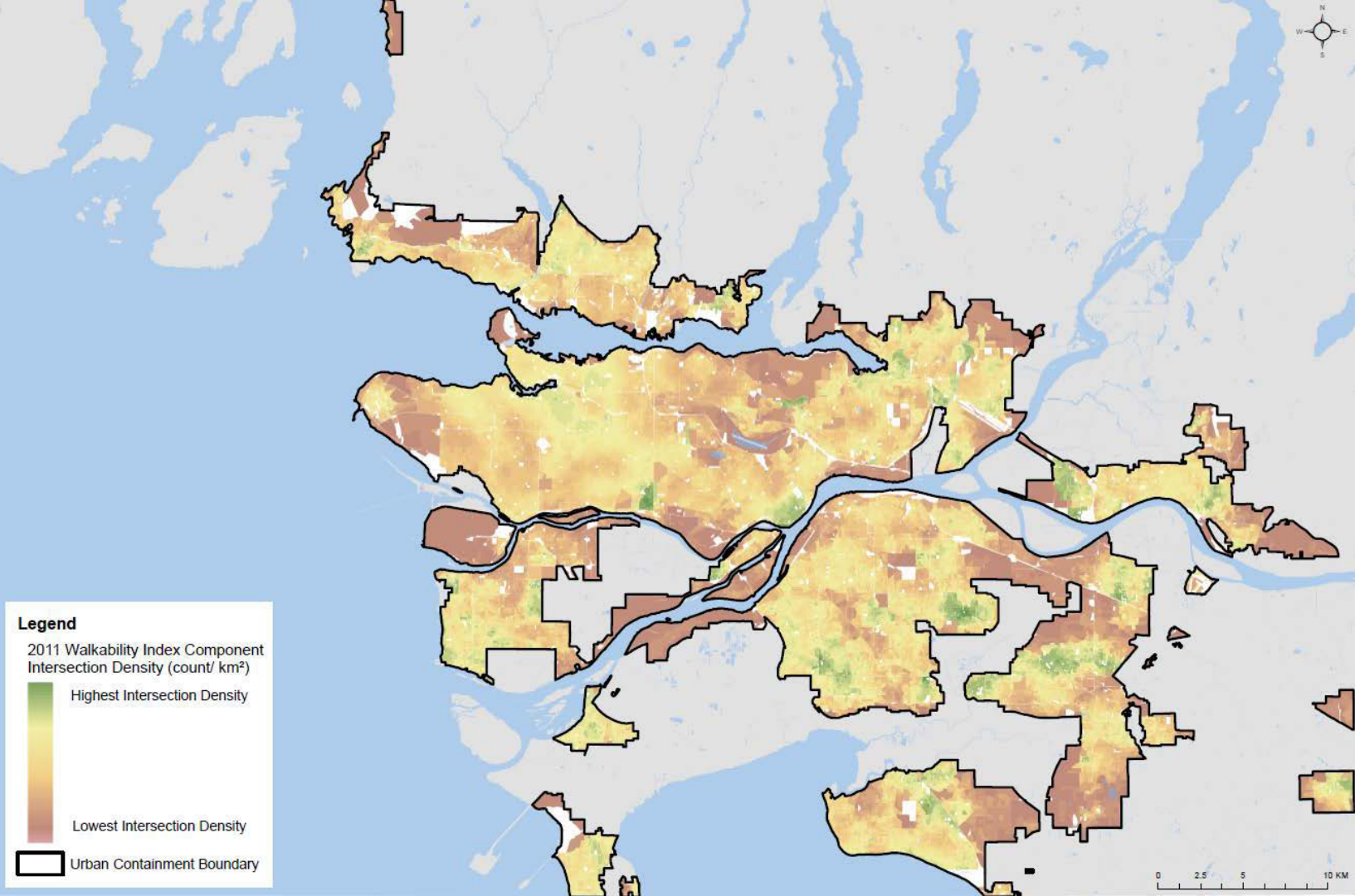
Irvine, CA

15 intersections/square mile

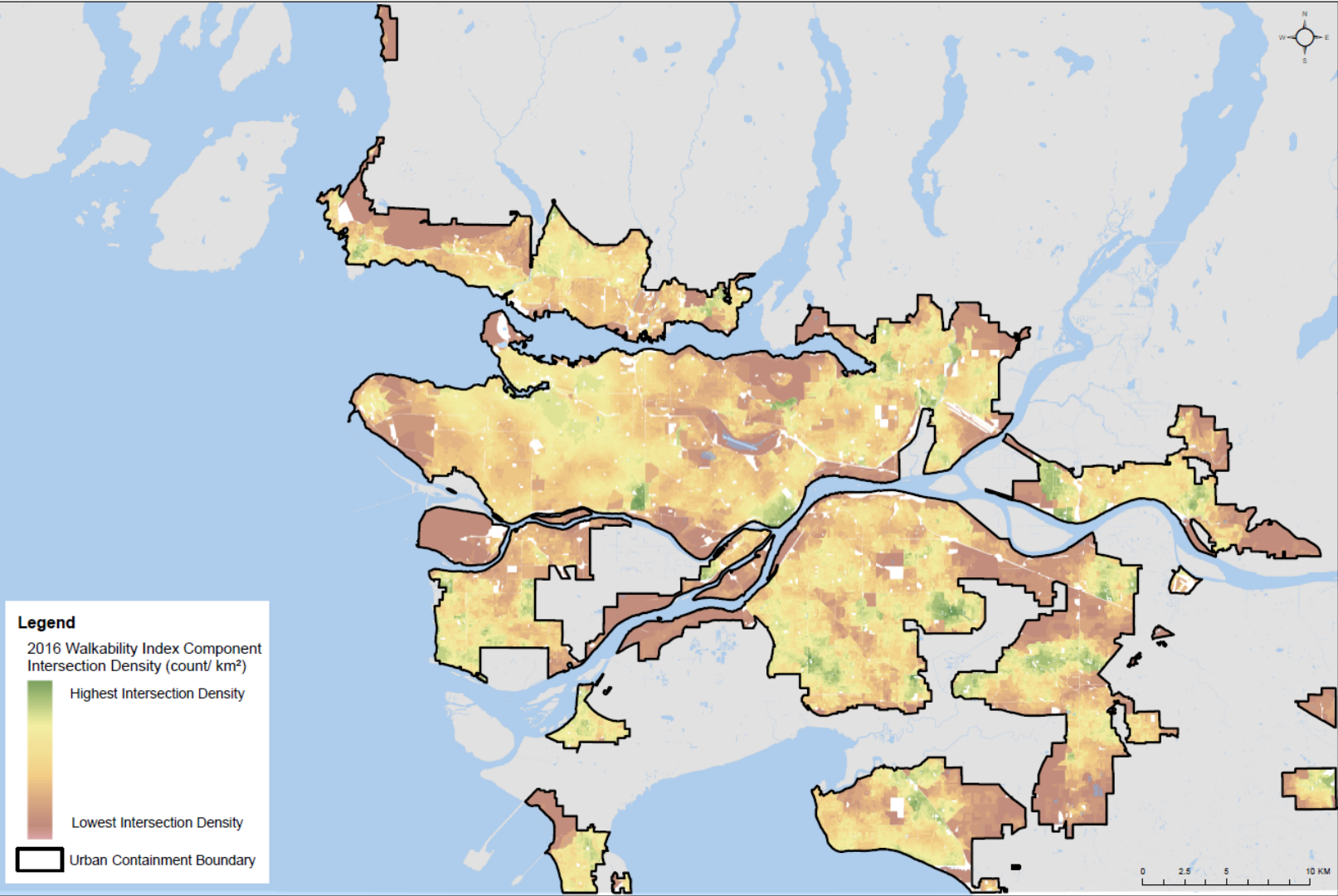


Source: Allan B. Jacobs, *Great Streets*, MIT Press, Cambridge, MA, 1993, pp. 221, 225, 249. Reprinted in Reid Ewing, *Pedestrian and Transit-Friendly Design: A Primer for Smart Growth*, Smart Growth Network, August 1999, p. 4. <http://www.epa.gov/dced/pdf/ptfd_primer.pdf>

2011 Intersection Density



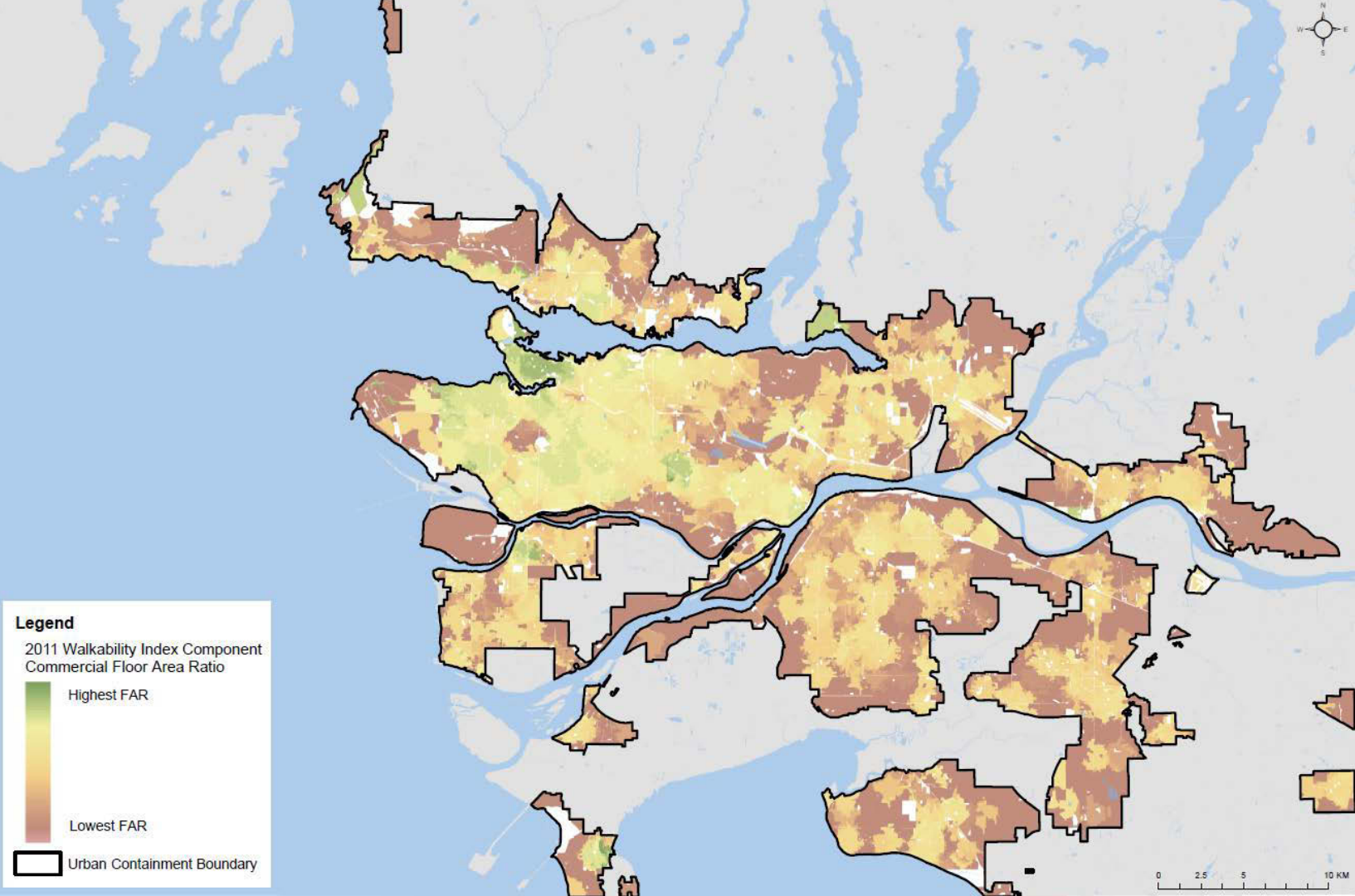
2016 Intersection Density



Walkability Component: Commercial Density (FAR)



2011 Commercial FAR



2016 Commercial FAR

Legend

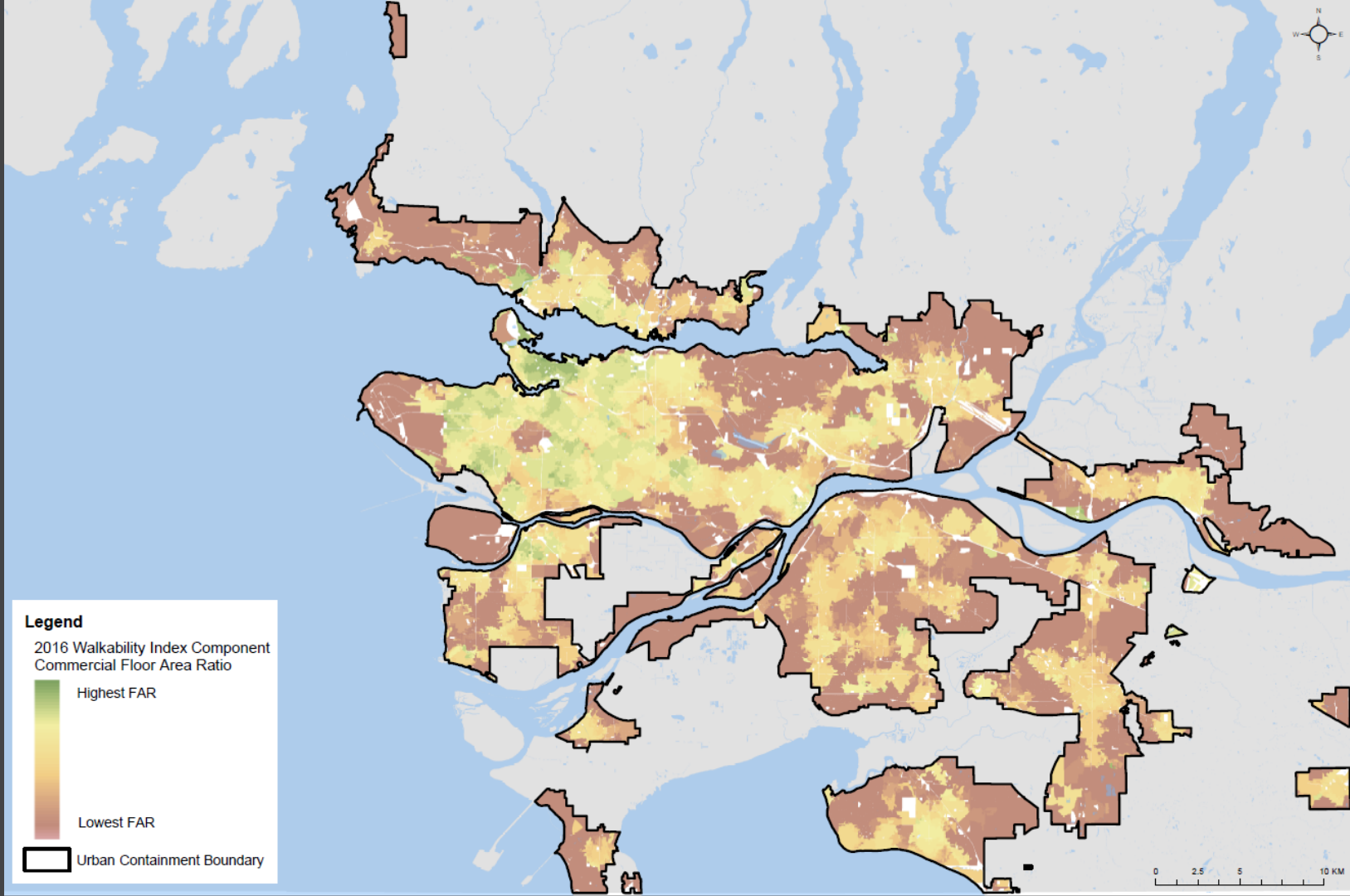
2016 Walkability Index Component
Commercial Floor Area Ratio

Highest FAR



Lowest FAR

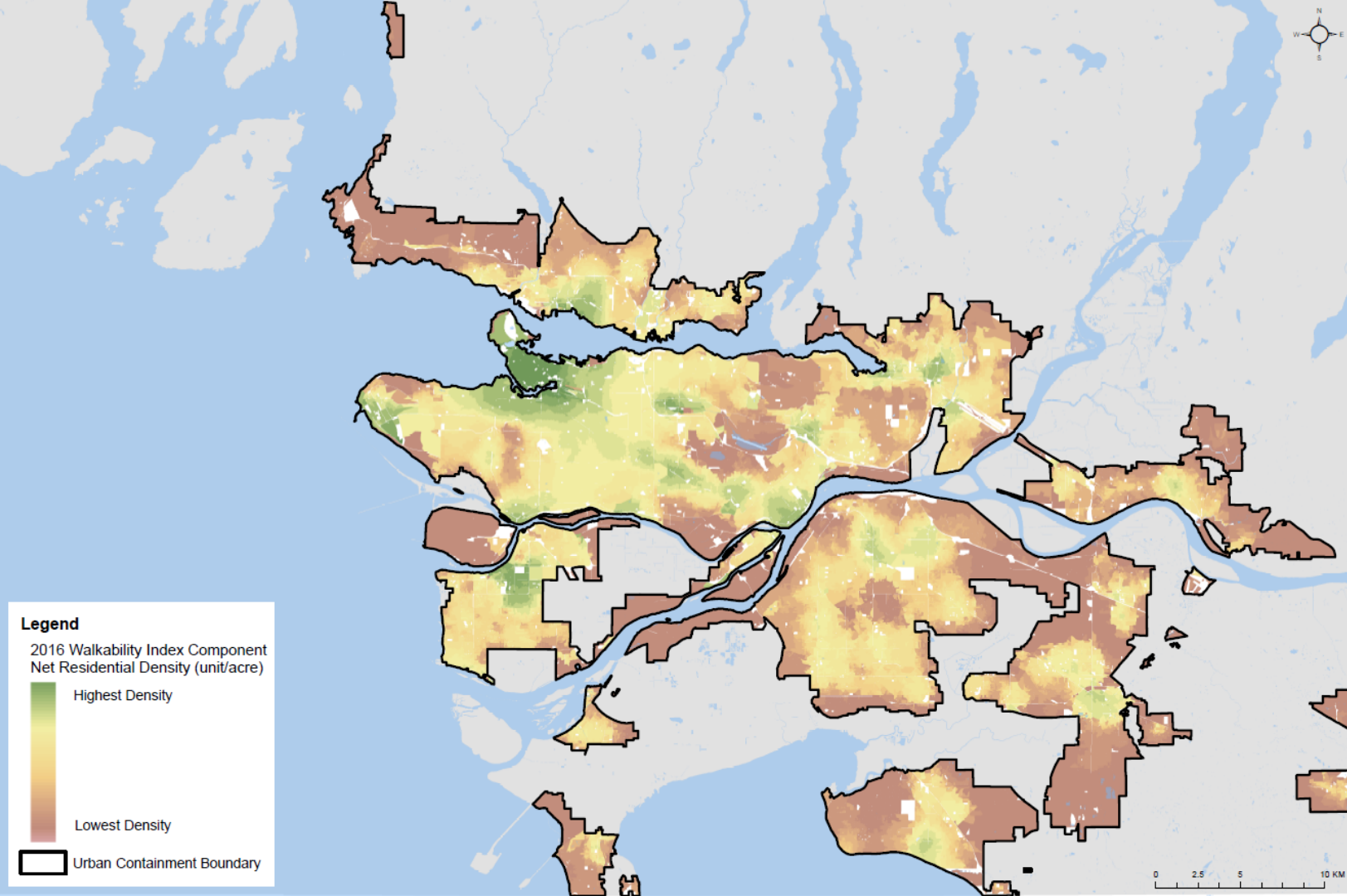
Urban Containment Boundary



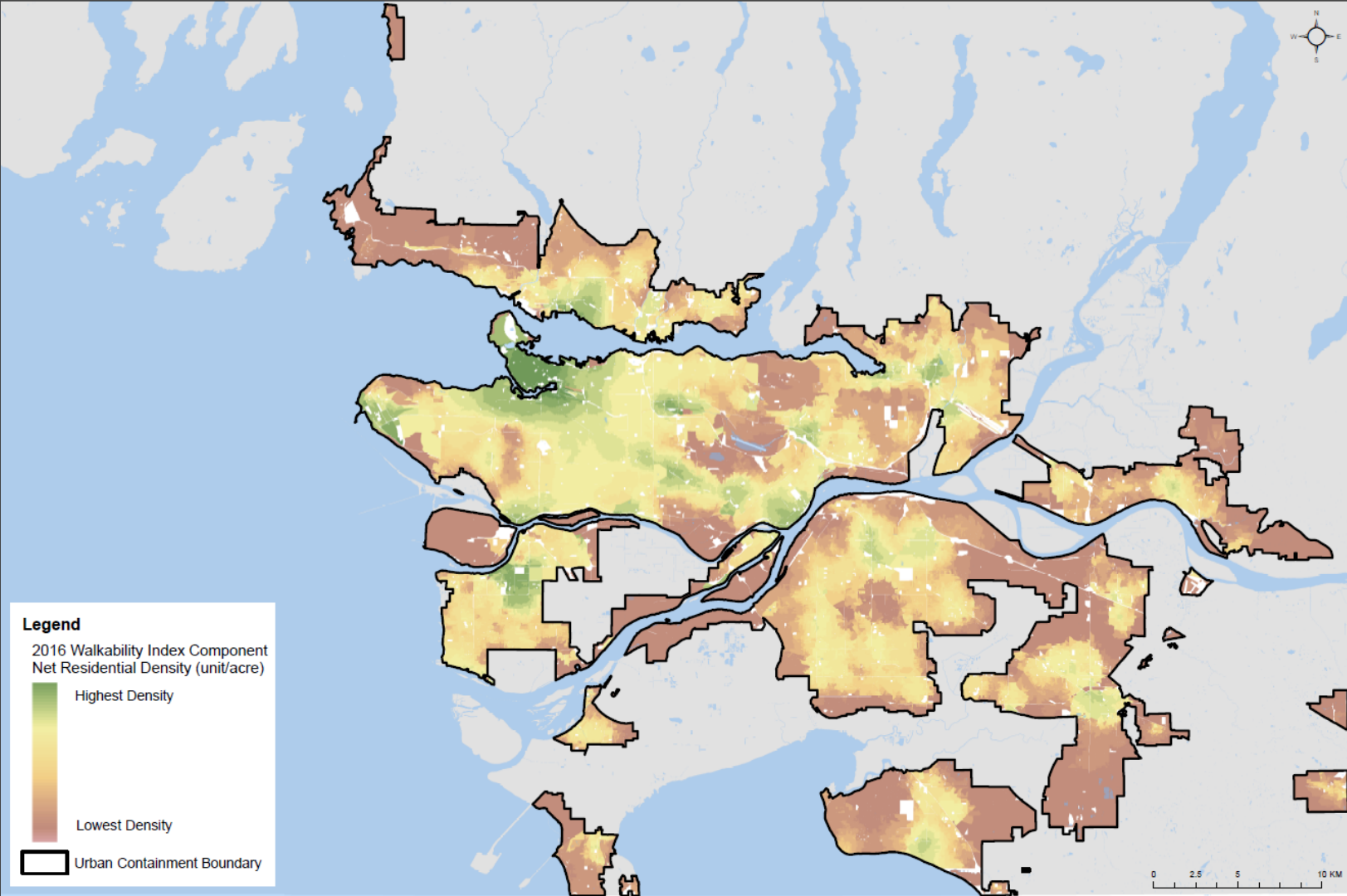
Walkability Component: Residential Density



2011 Net Residential Density



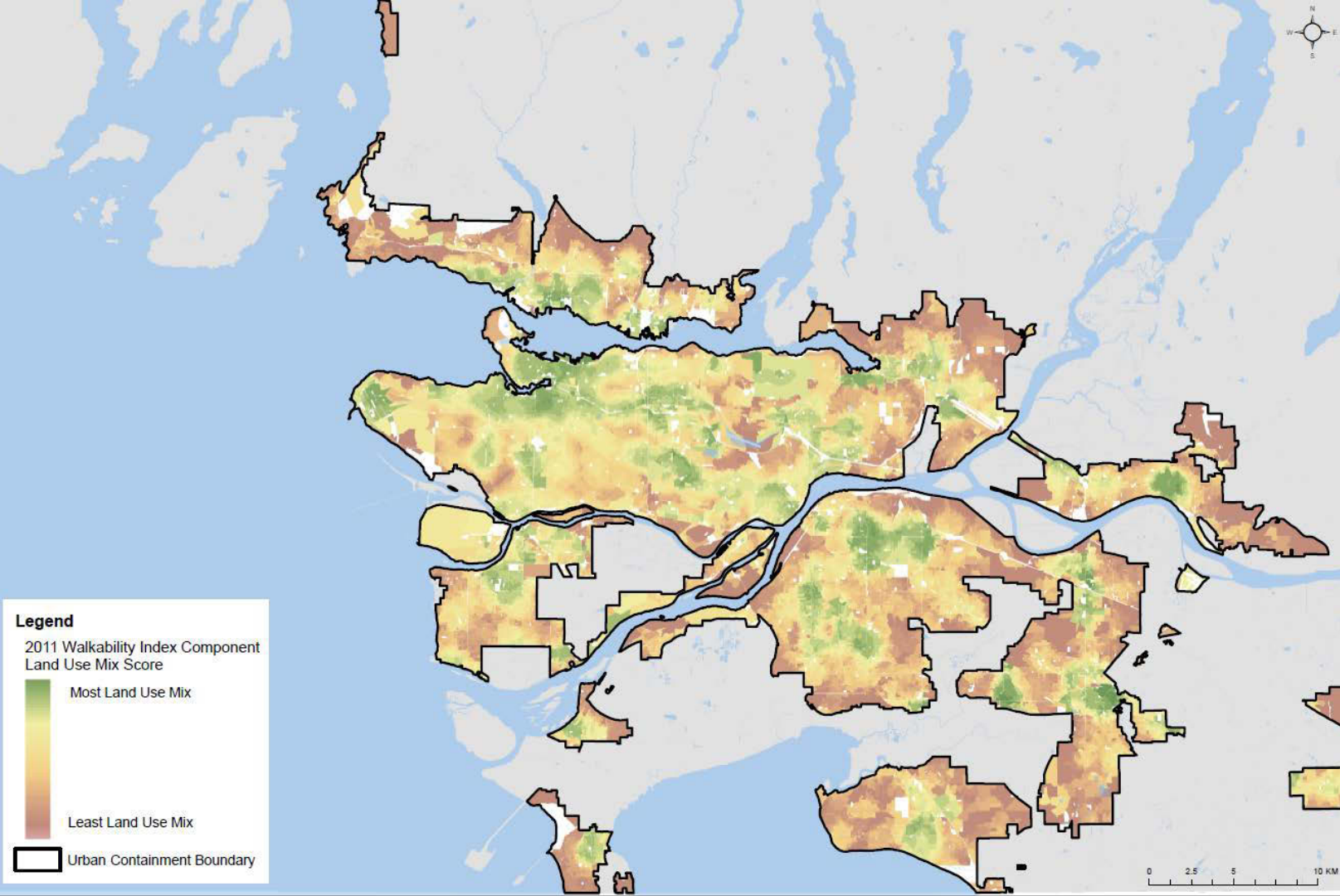
2016 Net Residential Density



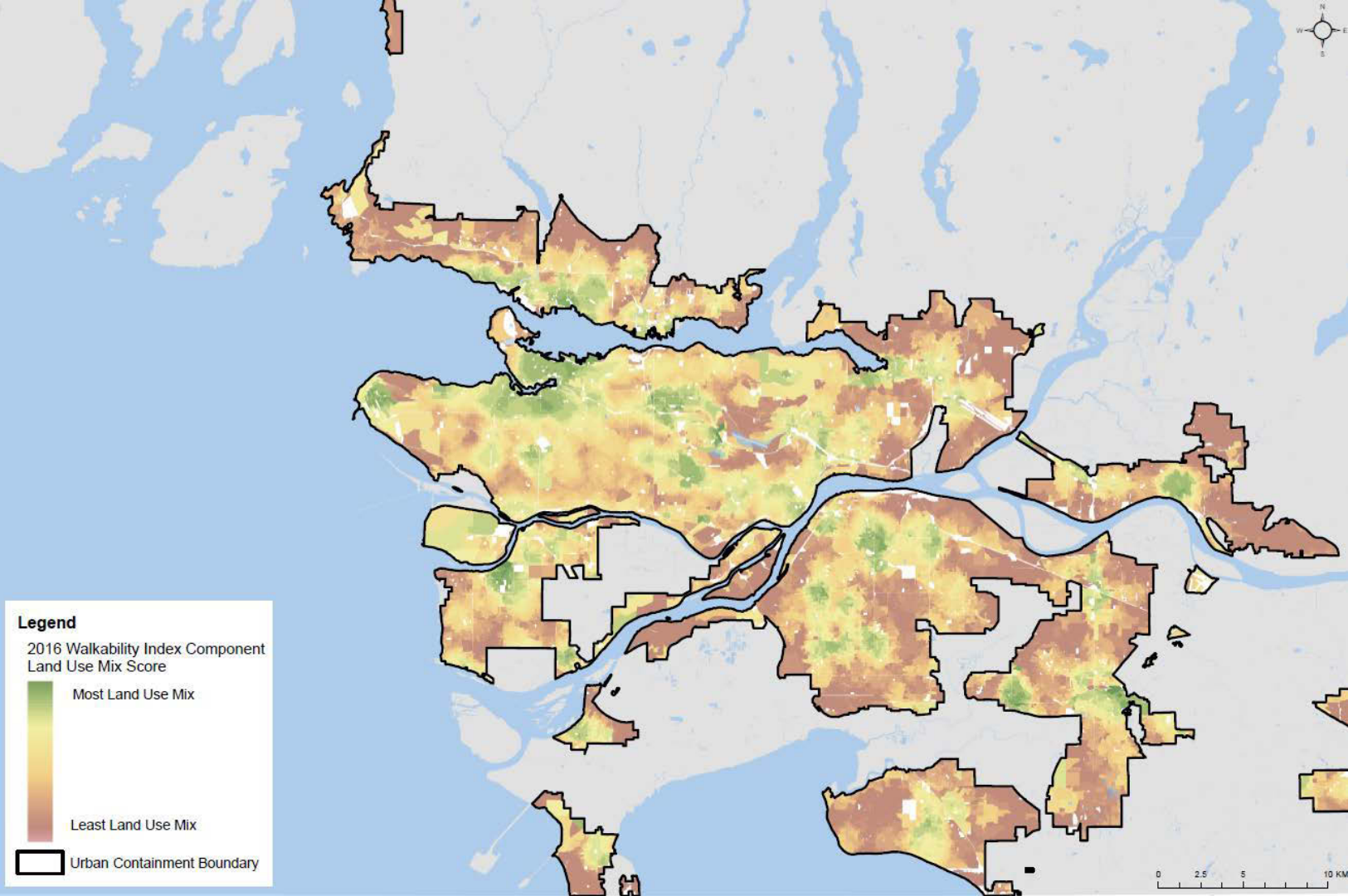
Walkability Component: Land Use Mix



2011 Land Use Mix



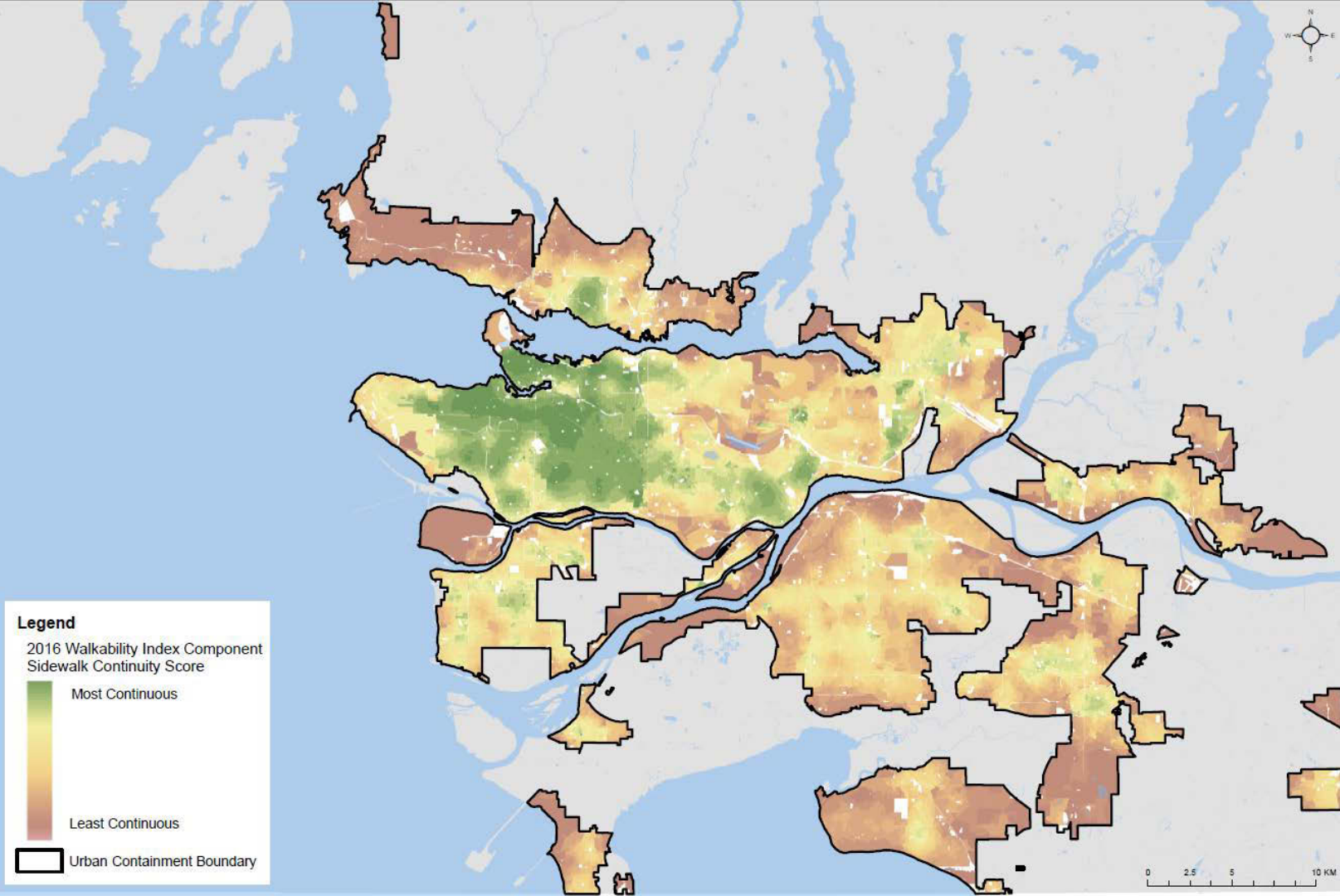
2016 Land Use Mix



Walkability Component: Sidewalk Continuity



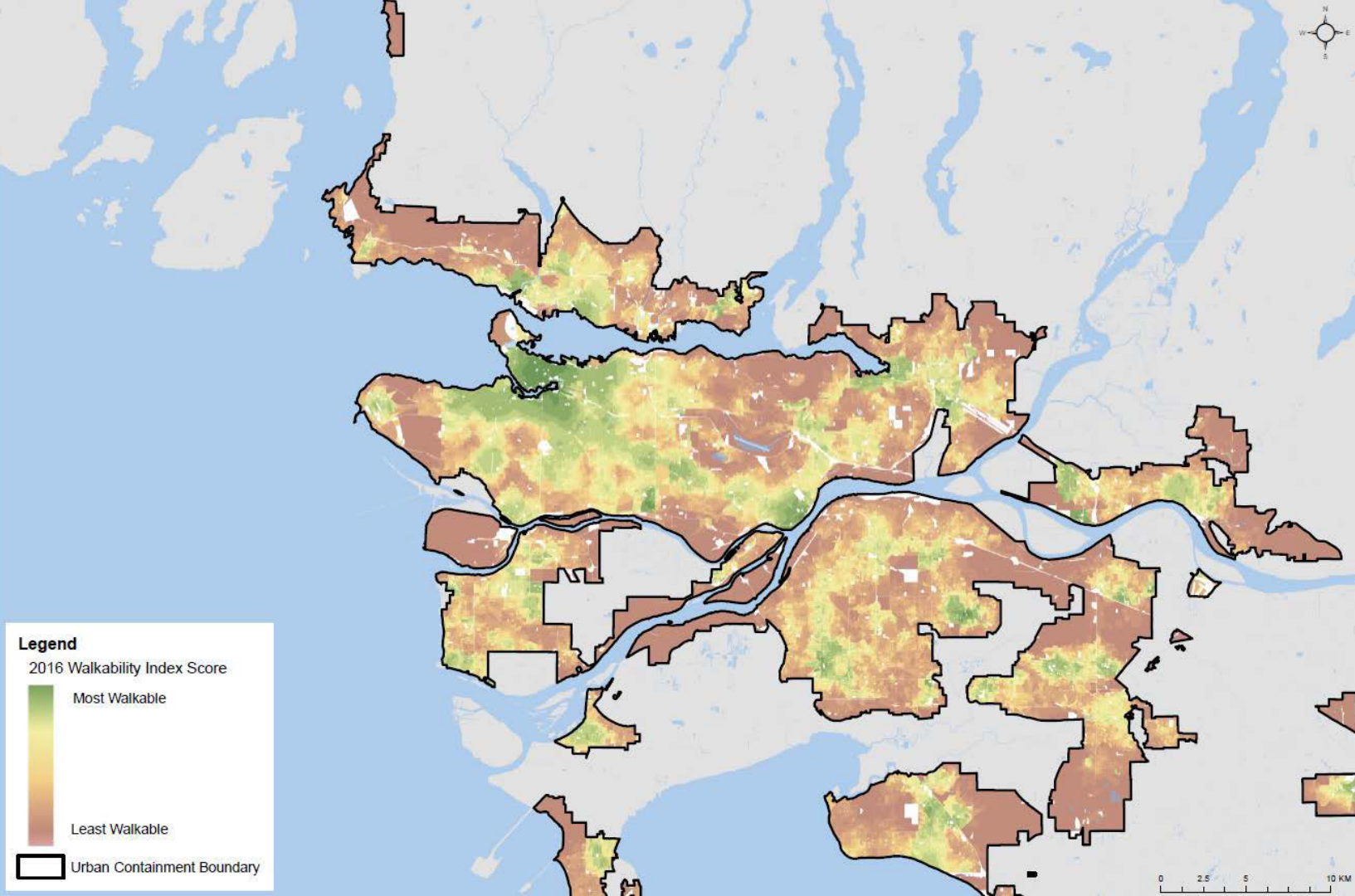
2016 Sidewalk continuity



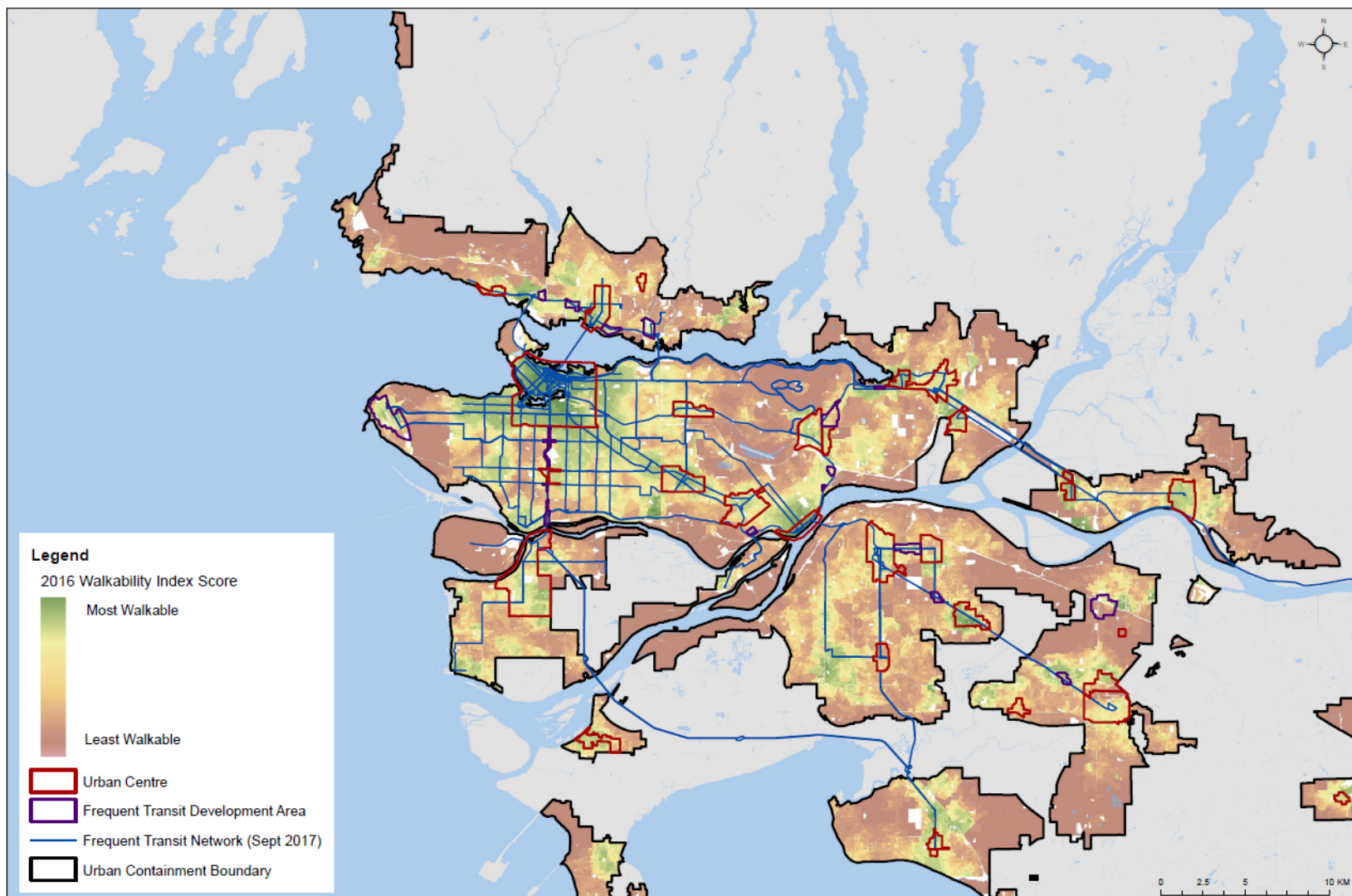
5 Components Combined: Walkability Index



2016 Index



2016
Index
+
FTN
+
UC &
FTDAs



Next Steps

- Determine how walkability can be used to support *Metro 2040* Performance Monitoring
- Update Implementation Guideline
- Data available on request



A scenic landscape featuring a calm lake in the foreground. In the middle ground, a small wooden cabin sits on the left shore, and a few small boats are visible on the water. The background is dominated by steep, forested mountains, with some peaks covered in snow under a cloudy sky.

Questions?



metrovancouver
SERVICES AND SOLUTIONS FOR A LIVABLE REGION



Climate and Natural Hazards Policy Review

SCOPE OF WORK AND RELATIONSHIP TO CLIMATE 2050

Edward Nichol

SENIOR POLICY AND PLANNING ANALYST,
REGIONAL PLANNING

Jason Emmert

SENIOR PLANNER, AIR QUALITY AND CLIMATE CHANGE

Regional Planning Committee Meeting – February 7, 2020



metrovanancouver
SERVICES AND SOLUTIONS FOR A LIVABLE REGION

Climate and Natural Hazard Policy Review: Purpose

Strengthen mitigation, adaptation, natural hazard policies throughout

Metro 2040 to:

- Better communicate the climate change benefits of the regional growth strategy and build knowledge in the planning community
- Assess performance of the region – how are we doing?
- Recommend new policies for GHG reduction/adaptation
- Consider updates to content related to natural hazards

and... Inform the *Climate 2050* Roadmap for Land Use and Growth Management

Climate 2050

- 30 year strategy to guide climate action across the organization and the region
- Ensure our infrastructure, ecosystems, and communities are resilient to the impacts of climate change
- Pursuing a carbon neutral region by 2050



Climate 2050 Issue Areas



Metro 2050 and Climate 2050

| Metro 2040 Policy Review | Climate 2050 Issue Area |
|----------------------------------|---|
| Agriculture | Agriculture |
| Environment | Nature & Ecosystems |
| Housing | Buildings Land Use and Growth Management |
| Industrial & Mixed Employment | Industry Land Use and Growth Management |
| Transportation | Transportation |
| UC/FTDA | Land Use and Growth Management Human Health and Well-Being |
| Rural | Transportation |

Metro 2050 and Climate 2050

- **Q1-Q3 2020**
 - Climate 2050 Discussion Papers (and engagement)
 - Metro 2050 Policy Reviews (and engagement)
- **Q4 2020-2021**
 - Draft Climate 2050 Roadmaps
 - Draft Metro 2050 and referral for comment



Thank you



metrovancouver
SERVICES AND SOLUTIONS FOR A LIVABLE REGION