

# Integrated Solid Waste and Resource Management

A Draft Solid Waste Management Plan  
for the Greater Vancouver  
Regional District  
and Member Municipalities

DRAFT

November, 2009



**metro**  
**vancouver**

[www.metrovancouver.org](http://www.metrovancouver.org)



# Table of Contents

<b>Vision Statement</b> . . . . .	<b>4</b>
<b>Goals and Targets</b> . . . . .	<b>5</b>
<b>A. Integrated Solid Waste Management and Resource Management Plan</b>	
Guiding Principles . . . . .	6
Sustainability . . . . .	6
Integrated Resource Recovery . . . . .	6
Resource Management Principles: The 5Rs . . . . .	6
Process and Consultation . . . . .	7
Aligning With Provincial Initiatives . . . . .	7
Coordinating With Other Metro Vancouver Plans . . . . .	9
Governance, Roles, and Responsibilities . . . . .	11
Geographic Scope . . . . .	13
Approved Facilities . . . . .	14
New Facilities . . . . .	15
First Nations Lands . . . . .	15
<b>B. Goals, Strategies, Actions and Measures</b> . . . . .	<b>16</b>
<b>Performance Measures</b> . . . . .	<b>29</b>
<b>Financial Plan</b> . . . . .	<b>30</b>

---

<b>Figure 1</b> Key Connections with Provincial Plans . . . . .	<b>8</b>
<b>Figure 2</b> Metro Vancouver Sustainability Framework . . . . .	<b>9</b>
<b>Figure 3</b> Key Connections with other Metro Vancouver Plans . . . . .	<b>10</b>
<b>Figure 4</b> Map of Plan Area . . . . .	<b>13</b>
<b>Figure 5</b> Map of Approved Facilities . . . . .	<b>14</b>

# Vision Statement

---

Metro Vancouver has a vision to achieve what humanity aspires to on a global basis – the highest quality of life embracing cultural vitality, economic prosperity, social justice and compassion, all nurtured by a beautiful and healthy natural environment.

We will achieve this vision by embracing the principles of sustainability, not least of which is an unshakeable commitment to the well-being of current and future generations and the health of our planet, in everything we do.

As we share our efforts in achieving this vision, we are confident that the inspiration and mutual learning we gain will become vital ingredients in our hopes for a sustainable common future.

## Building a Sustainable Livable Region

Building a sustainable, livable region is the overarching regional vision. Social, environmental and economic sustainability is, therefore, a fundamental objective in all Metro Vancouver activities: from the services we deliver through the management and strategic plans we develop and administer, to the various outreach activities we engage in pursuit of collaborative governance.

The vision of Integrated Solid Waste and Resource Management (ISWRM) is to contribute to this larger vision by reducing material waste to a minimum, recovering energy from materials that cannot themselves be recycled, and ensuring that the solid waste management system itself provides an economically efficient and reliable service with the minimum possible negative impact or risk to public health or the environment.

# Goals and Targets

---

## Goals

The overriding principle of Integrated Solid Waste and Resource Management Plan is the avoidance of waste through an aggressive waste reduction campaign and through the recovery of materials and energy from the waste that remains. In line with this principle, the Integrated Solid Waste and Resource Management Plan (ISWRMP) has four goals:

Goal 1: Minimize waste generation

Goal 2: Maximize reuse, recycling and material recovery

Goal 3: Recover energy from the waste stream after material recycling

Goal 4: Dispose of all remaining waste in landfill, after material recycling and energy recovery

The key strategies and actions to achieve the goals of the ISWRMP are set out in Part B, Goals, Strategies, Actions and Measures.

## Targets

The target of the ISWRMP is to increase the regional diversion rate from an average of 55% to 70% by 2015.

Conventionally it has been assumed that the 5Rs hierarchy approximates the sequence of processes in waste management and the goal of reducing, reusing or recycling waste to the maximum extent possible has been measured as the rate of 'diversion' of waste from reaching the fifth step in the hierarchy – the disposal of residuals. Modern reality is more complex. As a result, using the conventionally defined 'diversion rate' includes some source separated material that is used as fuel still being considered 'recycled' while some material that is recycled after incineration is still considered 'disposed.'

This plan is driven by the underlying principles but, for the sake of historic comparability continues to use the conventional definition of 'diversion rate'.

If the waste reduction and recycling initiatives in the plan are successfully implemented, only 30% of the generated waste stream will require treatment before disposal. Additional waste-to-energy capacity would be made available to recover energy from this stream.

# A. Integrated Solid Waste Management and Resource Management Plan

---

## Guiding Principles

The plan follows the sustainability principles set out in Metro Vancouver's Sustainability Framework, the principles of Integrated Resource Recovery and the 5R hierarchy of resource management.

## Sustainability

Sustainability encompasses a long term commitment to economic prosperity, community well-being and environmental integrity. It is at the core of Metro Vancouver's vision for the future, and provides the foundation for the development of the region's management plans.

The Metro Vancouver Sustainability Framework identifies three overarching principles which state that decision making must:

- Have regard for both local and global consequences, and long term impacts
- Recognize and reflect the interconnectedness and interdependence of systems
- Be collaborative

These provide the foundation for the three operating principles that guide Metro Vancouver:

- Protect and enhance the natural environment (Conserve and develop natural capital)
- Provide for ongoing prosperity (Conserve and develop economic capital)
- Build community capacity and social cohesion (Conserve and develop social capital)

A solid waste management plan which follows these principles will seek to ensure our individual and collective behaviour does not generate avoidable or unnecessary material waste and will seek systems and technologies which recover and recycle materials and recover energy.

Where investment or reinvestment in infrastructure is required, that infrastructure will be resilient, be adaptable to climate change, lessen the region's dependence on non-renewable energy sources, and protect the environment.

## Integrated Resource Recovery

Integrated Resource Recovery is an approach to designing and managing urban systems, particularly utilities, to generate synergies which enable the 'waste' from one system to become 'resources' for another.

These traditional wastes are untapped resources. If accessed and used appropriately, they can help preserve non-renewable resources, stretch the capacity of existing infrastructure, save energy, generate revenue, protect the environment and reduce greenhouse gas (GHG) emissions.

## Resource Management Principles: The 5Rs

The principles of the 5R hierarchy also emphasize the value of waste as a resource. The hierarchy sets out the relative value of different methods of waste management:

- **Reduce** waste at source
- **Reuse** where possible
- **Recycle** products at the end of their useful life
- **Recover** energy or materials from the waste stream
- **Manage Residuals** in an environmentally sound manner

## Process and Consultation

All actions included in this plan will be undertaken in consultation and cooperation with municipalities, senior government, First Nations, the business community, and the public.

As the population grows and circumstances change, the ISWRMP will be reviewed and revised. An ISWRMP progress report will be made every two years and a comprehensive review of the plan every ten years.

## Aligning With Provincial Initiatives

This is a provincially mandated plan. The objectives set out in the 1995 Greater Vancouver Regional Solid Waste Management Plan were set by the Provincial Government. These objectives were:

- To reduce per capita garbage disposal in the year 1995 by at least 30% from 1990 levels
- To similarly reduce per capita garbage disposal in the year 2000 by at least 50% from 1990 levels
- To responsibly manage residuals

These objectives have been met.

The updated ISWRMP is guided by principles that are aligned with current provincial policies and positions, ensuring that Metro Vancouver's and senior governments' environmental and fiscal objectives and actions are mutually supportive and successful.

Key provincial plans and policies supported by the ISWRMP include the:

- **BC Climate Action Plan.** This plan sets a provincial target of 33% less greenhouse gas emissions by 2020, and 80% fewer by 2050.

The ISWRMP will contribute to meeting these targets by facilitating waste reduction and by treating waste as a resource to be reused or recycled.

- **BC Energy Plan- A Vision for Clean Energy Leadership.** The Energy Plan sets goals for clean, self-sufficient electricity production including "clean energy leadership" and energy self-sufficiency by 2016. The ISWRMP seeks to expand the generation of electricity and biofuels from municipal solid waste as well as the recovery of heat for use in industrial or district heating systems.

- **A Guide to Green Choices - Ideas and Practical Advice for Land Use Decisions in BC Communities.** This guide expressed the need for "sustainable infrastructure". The long-term sustainable management of existing and future infrastructure investments requires integrated, innovative solutions.

The ISWRMP contains actions that support sustainable infrastructure, such as clean energy from district energy systems.

- **LiveSmart BC.** This program aims to support low-carbon communities through incentives for energy savings and GHG reduction in homes and businesses, on the road, and in the community.

The ISWRMP facilitates opportunities for the residential and commercial sectors to reduce their contribution to GHG emissions through waste reduction, reuse, recycle and regional organic waste management.

- **BC Bioenergy Strategy.** The Strategy encourages the production of fuel from biomass.

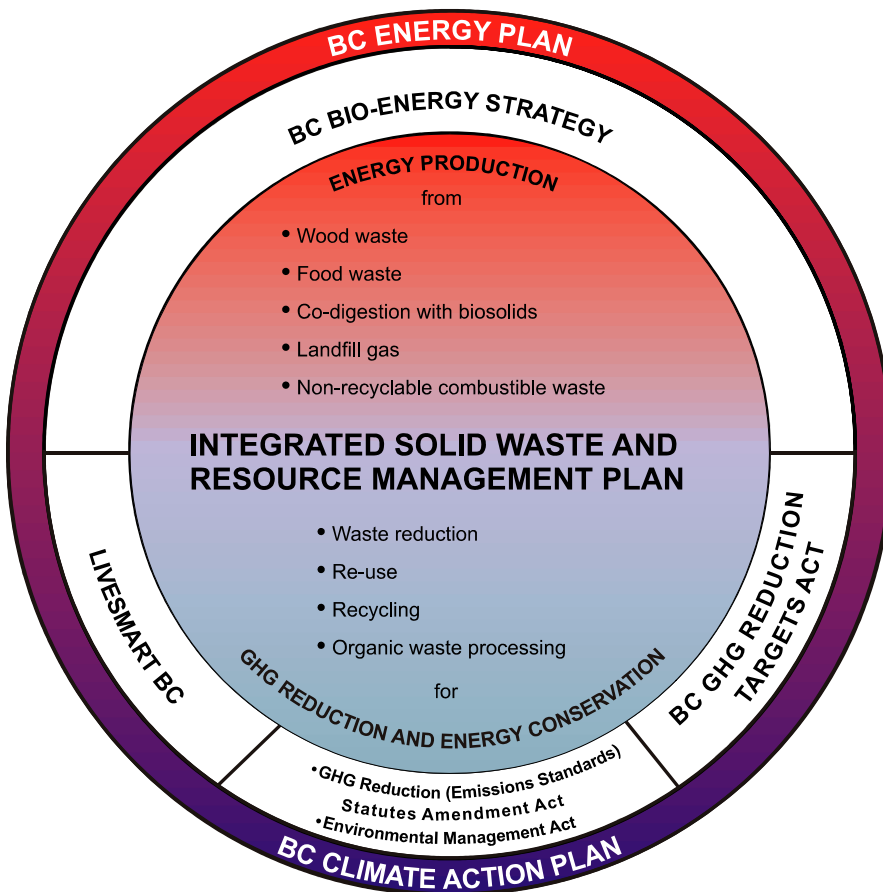
The ISWRMP builds upon existing efforts involving the recovery of methane from landfills. It also promotes additional diversion of biomass, such as food residues and treated wood, for use as renewable sources of energy. Opportunities to integrate liquid and solid waste management also support the BC Bioenergy Strategy.

- **Landfill Gas Management Regulation.** This regulation requires landfills to consider designs that optimize methane capture, reducing greenhouse gas emissions.

Existing and any future Metro Vancouver landfills under the ISWRMP will follow this regulation, contributing to the climate change solution.

In partnership with municipalities and the private sector, Metro Vancouver’s initiatives in all of these areas will reduce greenhouse gas emissions, diversify the region’s sources of energy, increase renewable energy sources, and increase the region’s energy independence, as shown in Figure 1.

FIGURE 1: KEY CONNECTIONS BETWEEN PROVINCIAL PLANS AND METRO VANCOUVER’S INTEGRATED SOLID WASTE AND RESOURCE MANAGEMENT PLAN



## Coordinating With Other Metro Vancouver Plans

The Sustainable Region Initiative provides a framework for linking the ISWRMP with the region's other plans, as shown in Figure 2. It also establishes links across regionally mandated plans and with initiatives that are executed by other partners.

The ISWRMP identifies synergies with Metro Vancouver's other utilities and plans, to make the best use of society's resources, and to minimize the region's impact on the environment.

The ISWRMP includes coordinated actions with the Integrated Liquid Waste and Resource Management Plan, chosen to identify opportunities to make best use of the resources generated from the two waste streams. For example, organic municipal solid waste, like waste food, can potentially be co-digested with sewage sludge.

The principles guiding the ISWRMP and the connected goals and actions will also help achieve objectives in the Air Quality Management Plan and Metro Vancouver 2040, the region's Regional Growth Strategy. The ISWRMP will minimize Metro Vancouver's contribution to climate change by reducing the disposal of untreated waste in landfills, by recovering energy in the form of heat for district heating, and by reducing the use of fossil fuels for space heating. These steps will assist in building compact, complete communities using clean energy for district heating.

Figure 3 shows the connections between the ISWRMP and other regional plans.

FIGURE 2: METRO VANCOUVER SUSTAINABILITY FRAMEWORK

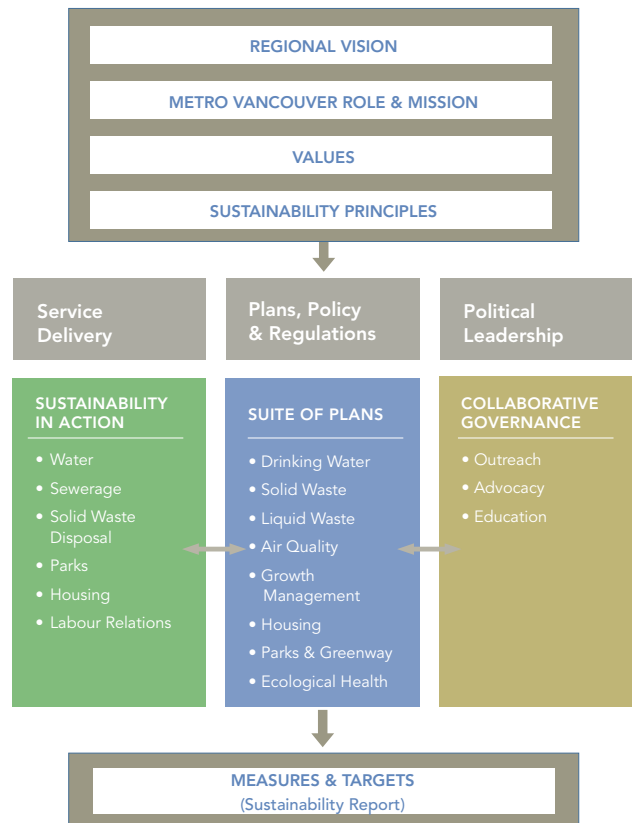
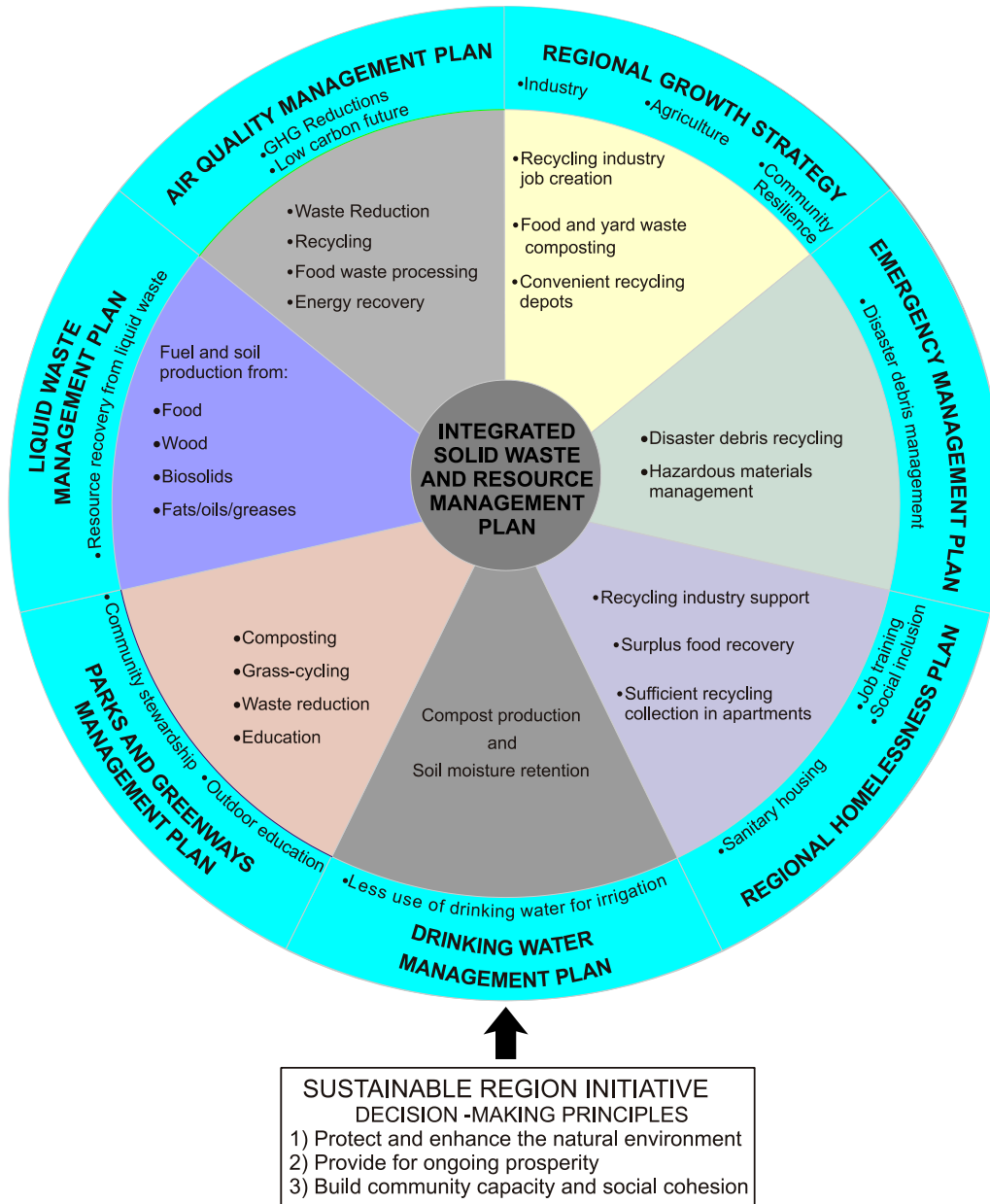


FIGURE 3: KEY CONNECTIONS BETWEEN METRO VANCOUVER'S INTEGRATED SOLID WASTE AND RESOURCE MANAGEMENT PLAN AND OTHER METRO VANCOUVER PLANS



---

## Governance, Roles, and Responsibilities

Solid waste management plans are authorized and regulated through the BC Environmental Management Act. Once each updated plan is approved, it becomes a regulatory document for solid waste management.

Metro Vancouver and member municipalities work collaboratively to provide waste management services to the region. Metro Vancouver coordinates the long-range planning process for recycling and disposing of solid waste in the region. Metro Vancouver also funds and manages the operating contracts for the transfer stations, waste-to-energy facility and landfill (with the exception of the Vancouver South Transfer Station and the Vancouver Landfill which are owned and operated by the City of Vancouver) that make up the region's integrated solid waste management system.

Municipal solid waste (MSW) is defined as refuse that originates from residential, commercial, institutional, demolition, land clearing or construction sources.

For management purposes, waste is generated from three sectors: residential (from both single-family units and multi-family units); industrial, commercial and institutional (ICI); and demolition, land clearing and construction (DLC). Member municipalities operate or co-ordinate the collection of recyclables and garbage and in some cases yard and garden waste from the single-family residential sector and some ICI and multi-family residential sources. Recycling from multi-family residences is also collected by municipalities, but much of the ICI and multi-family residential garbage collection services are provided by the private sector. ICI recycling is collected almost exclusively by private haulers. The third sector, DLC, is primarily self-managed with businesses and non-profit societies providing recycling, transferring and/or disposal services.

The management of household hazardous wastes is carried out by the Province primarily through Extended Producer Responsibility (EPR) programs. Provided financial and liability issues are satisfied, Metro Vancouver and member municipalities will cooperate with the Province and industry groups to provide a comprehensive household hazardous waste management program.

All the recycling processing facilities in the region are privately run businesses, as are the brokers who facilitate the movement of recyclables to end markets inside and outside of the region.

---

The extent and complexity of the solid waste systems, with roles and responsibilities spread across several levels of governance, require close co-ordination among the following groups:

#### Federal Government

- The Federal Government regulates waste management facilities on federal lands and on First Nation Reserves.

#### Provincial Government

- Ministry of Environment
- Ministry of Community and Rural Development
- Ministry of Health
- Environmental Assessment Office

#### Local Government

- Member municipalities implement municipal actions in the ISWRMP and are mandated to manage solid waste
- Metro Vancouver implements regional actions in the ISWRMP, takes a collaborative role for some actions, and is required to report on ISWRMP progress

#### First Nations

- First Nations have constitutional rights which must be taken into account in the planning process

#### Private Sector

- Private sector businesses generate waste which requires management under the ISWRMP
- Private sector haulers, material brokers, recyclers and others provide services which make the implementation of an integrated waste management system possible

#### Non-profit Sector

- Provides voluntary services to segments of the waste generating public

#### Residents

- Generate waste either as private individuals or as contributors to institutional, commercial, industrial, demolition, land clearing or construction activities
- Responsible for carrying out proper waste reduction, recycling and disposal activities

## Geographic Scope

The ISWRMP applies to the geographic area of Metro Vancouver (see Figure 4). All strategies and actions in the ISWRMP apply to the members of the Greater Vancouver Regional District.

City of Abbotsford	City of North Vancouver	<i>Electoral Area A – which includes the west side of Pitt Lake, the northern portion of Indian Arm, a portion of land between the District of West Vancouver and Squamish Lillooet Regional District (excluding the Village of Lions Bay), the islands of Bowyer, Passage and Barnston, the University Endowment Lands (including Pacific Spirit Regional Park), and the University of British Columbia</i>
Village of Anmore	District of North Vancouver	
Village of Belcarra	City of Pitt Meadows	
Bowen Island Municipality	City of Port Coquitlam	
City of Burnaby	City of Port Moody	
City of Coquitlam	City of Richmond	
Corporation of Delta	City of Surrey	
City of Langley	City of Vancouver	
Township of Langley	District of West Vancouver	
Village of Lions Bay	City of White Rock	
District of Maple Ridge	Tsawwassen First Nation	
City of New Westminster		

FIGURE 4: MAP OF PLAN AREA



## Approved Facilities

Municipal solid waste in the region can be directed for disposal to any approved disposal facility identified in the ISWRMP.

Approved disposal facilities include the:

- Waste-to-Energy facility in Burnaby
- Vancouver Landfill
- Cache Creek Landfill
- Any disposal facility licensed by Metro Vancouver under the Greater Vancouver Sewerage and Drainage District Municipal Solid Waste and Recyclable Material Regulatory Bylaw No. 181, 1996 as amended by Bylaw No. 183, 1996
- Any new waste-to-energy facility established through a competitive process and subject to an environmental assessment as required by provincial and federal regulation

Since the 1995 SWMP was approved the following disposal facility has been closed:

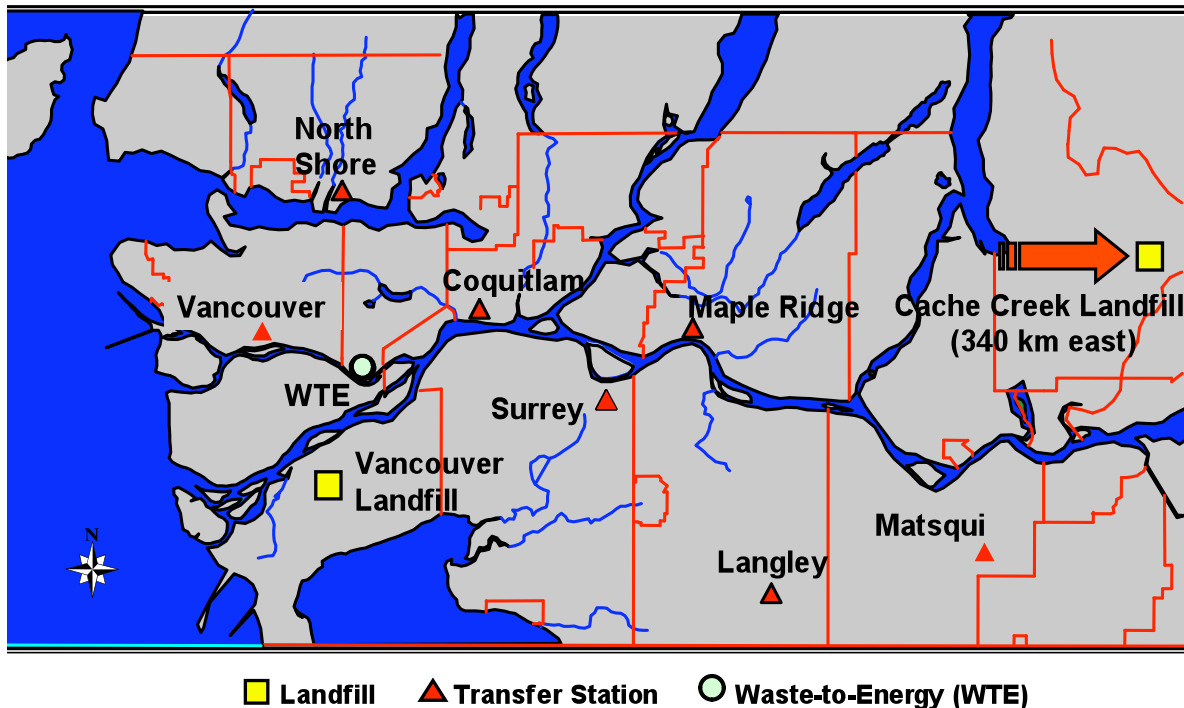
- Port Mann Landfill

In addition to the approved disposal facilities, the following transfer stations are an integral part of the Metro Vancouver integrated waste management system:

- North Shore Transfer Station
- Vancouver South Transfer Station
- Coquitlam Transfer Station
- Surrey Transfer Station
- Langley Residential Transfer Station
- Maple Ridge Residential Transfer Station
- Matsqui Transfer Station

The locations of the Metro Vancouver and City of Vancouver facilities are shown in Figure 5.

FIGURE 5: MAP OF APPROVED FACILITIES



## New Facilities

The Ministry of Environment will be informed and consulted regarding the addition of new disposal facilities. Metro Vancouver will develop the required public consultation plan and obtain the approval of the Ministry to proceed. An amendment to the plan will be requested for new disposal facilities after consultation, siting and preliminary design work is completed.

The addition of new facilities which are not disposal facilities will not necessitate an amendment to this plan.

## First Nations Lands

Unknown quantities of waste from Metro Vancouver, primarily from the DLC sector, are disposed in landfills located on First Nations lands both outside and inside the Metro Vancouver geographical area. Metro Vancouver has no jurisdiction for these landfills.

# B. Goals, Strategies, Actions and Measures

## Goal 1: Minimize Waste Generation

The following strategies and actions are proposed to achieve this goal:

### STRATEGY 1.1

**Advocate that senior governments transfer additional waste management responsibilities to producers and consumers**

The costs and responsibilities of waste management have historically been borne by local governments and taxpayers. The responsibility for the costs and risks to manage end-of-life products should progressively transfer to the manufacturers of goods and the consumers that use them to provide the appropriate market mechanism to encourage more sustainable manufacturing and consumer choices.

#### METRO VANCOUVER WILL:

- 1.1.1 Be a strong advocate for Extended Producer Responsibility (EPR). *Ongoing*
- 1.1.2 Participate on Federal EPR initiatives such as the Canadian Council of Ministers of Environment (CCME) Extended Producer Responsibility Task Force, to develop national guidelines for sustainable packaging. *Ongoing*
- 1.1.3 Participate on industry stewardship advisory committees. *Ongoing*
- 1.1.4 Participate on the BC Product Stewardship Council to assist in evaluating existing and developing new EPR programs. *Ongoing*

#### MUNICIPALITIES WILL:

- 1.1.5 Partner with Metro Vancouver in support of actions 1.1.1 through 1.1.4 *Ongoing*

#### ACTIONS REQUESTED OF OTHER GOVERNMENTS AND AGENCIES:

- 1.1.6 Ministry of Environment to create formal partnership, including Metro Vancouver staff representation, to accelerate EPR program development and implementation and invite Metro Vancouver's participation *2010*

### STRATEGY 1.2

**Reduce or eliminate materials entering the solid waste system which hinder or limit the opportunities to achieve reuse, recycling, or energy recovery, or that may exacerbate environmental impacts of disposed residuals**

Some inputs to the solid waste stream may hinder or limit the opportunities to achieve reuse, recycling, or energy recovery, or may exacerbate environmental impacts of disposed residuals. These inputs will be identified and programs developed to reduce or eliminate them. This strategy also applies to Goal 2.

#### METRO VANCOUVER WILL:

- 1.2.1 Work with disposal facility operators, local municipalities and the recycling industry. *Ongoing*
  - (a) to introduce material bans after suitable public information programs. *On-going*

### STRATEGY 1.3

#### Provide information and education on options to reduce waste

The amount of waste we produce is directly linked to the amount and type of goods and services we consume. Providing the public and businesses with an awareness of the consequences of unsustainable behaviour and tools and incentives to change will assist in reducing the generation of waste.

#### METRO VANCOUVER WILL:

- 1.3.1 Develop and deliver a community social marketing based program to inform and educate citizens on waste reduction opportunities. *Ongoing*
- (a) Promote 70% diversion goal over all sectors – feature in communication materials. *On-going*
  
- 1.3.2 Develop and deliver a community social marketing based business education plan, including business guides and other outreach programs to inform and educate businesses on waste reduction opportunities. *2011*

#### MUNICIPALITIES WILL:

- 1.3.3 Partner with and assist Metro Vancouver in the development and delivery of public and business information and education programs. *Ongoing*

## Goal 2: Maximize Reuse, Recycling and Material Recovery

Strategies to achieve this goal focus on proactive approaches to reuse, increased recycling effort and implementation of a region-wide food waste composting program.

### Strategy 2.1 Increase the opportunities for reuse

Increasing the opportunities for individuals to reuse more materials involves increasing convenience and reducing impediments.

#### METRO VANCOUVER WILL:

- 2.1.1 Investigate financial and regulatory barriers which prevent or discourage the reuse of materials. *2011*
- 2.1.2 Investigate the effectiveness and adequacy of existing material exchange networks. *2011*
- 2.1.3 Bring forward appropriate measures which respond to the findings of 2.1.1 and 2.1.2. *2011*

#### MUNICIPALITIES WILL:

- 2.1.4 Work with Metro Vancouver to give effect to 2.1.1, 2.1.2 and 2.1.3. *Ongoing*

### Strategy 2.2 Increase the effectiveness of existing recycling programs

Use the existing infrastructure effectively to achieve higher recycling rates.

#### METRO VANCOUVER WILL:

- 2.2.1 Implement disposal bans on materials that limit opportunities to achieve reuse, recycling, or energy recovery. *On-going*
  - (a) Work with disposal facility operators, local municipalities and the recycling industry to determine the impact and source of components of the waste stream, the consequence and feasibility of banning materials with the most negative impacts and the most suitable recycling options for those materials. *On-going*
  - (b) Continue the monitoring and enforcement of the disposal bans. *On-going*
  - (c) Introduce material bans as determined by 1.2.1 (a) after suitable public information programs. *On-going*
  - (d) Analyse the effectiveness of disposal bans and possible alternative enforcement models including enforcement at source. *2010*
  - (e) After suitable public information programs, expand disposal bans to include materials encompassed by new EPR programs and material for which new recycling markets are developed. *On-going*
- 2.2.2 Inform businesses and residents of recycling opportunities. *On-going*
  - (a) Continue and upgrade a regional web-based source of information on recycling opportunities for businesses and residents. *On-going*
  - (b) Keep municipalities fully informed as to recycling collection and drop off facilities and changes to policies and facilities. *On-going*
  - (c) Provide outreach services. *On-going*

- 2.2.3 Increase the efficiency and consistency of recycling collection services across the region. *2012*
- (a) Work with municipalities to review materials accepted for recycling from residential and ICI sources. *2012*
  - (b) In collaboration with municipalities, undertake a business case review of the residential and ICI waste and recycling collection services over the region to determine and implement the appropriate level of consistency between municipalities. *2012*
- 2.2.4 Establish Eco-Centres. *On-going*
- (a) Establish a work group to determine the terms and conditions for participating municipalities and industries and the means of integrating Eco-Centres into Metro Vancouver's transfer station system and municipal depot systems. *On-going*
  - (b) Develop the model of Eco-Centres, new one-stop-drop centres for recycling. *On-going*
  - (c) With municipalities, determine the terms and conditions for participating municipalities and industries and develop appropriate business cases. *On-going*
  - (d) Establish the first Eco-Centre in Surrey. *On-going*
  - (e) Progressively expand the Eco-Centre system across the region as municipal business cases determine. *On-going*
- 2.2.5 Promote recycling at festivals and events. *On-going*
- (a) Complete pilot studies on Zero Waste initiatives at festivals and events. *On-going*
  - (b) Develop a Zero Waste toolkit for festivals and events. *On-going*
  - (c) Continue to work with municipalities, EPR groups and local community groups to implement waste minimization and recycling at community festivals and events, including conferences and tradeshow. *On-going*
  - (d) Provide outreach services. *On-going*
- 2.2.6 Work with schools to conduct pilot programs to promote waste reduction and recycling. *On-going*
- MUNICIPALITIES WILL:**
- 2.2.7 Work with Metro Vancouver on actions designed to: *On-going*
- (a) implement disposal bans; *On-going*
  - (b) inform businesses and residents of recycling opportunities; *On-going*
  - (c) increase the efficiency and consistency of recycling collection services across the region; *On-going*
  - (d) establish Eco Centres; *On-going*
  - (e) promote recycling at community events and festivals; *On-going*
  - (f) work with schools to conduct pilot programs to promote waste reduction and recycling. *On-going*

## Strategy 2.3: Facilitate increased private sector recycling

There is a shortage of recycling processing capacity for many materials within the region. Metro Vancouver and member municipalities can assist in addressing this shortage by using tools at its disposal to change the business environment so that the private sector can increase capacity.

### METRO VANCOUVER WILL:

- 2.3.1 Facilitate the siting of private sector recycling activities. *2012*
  - (a) Review the GVS&DD Solid Waste Regulatory Bylaw to facilitate the siting of municipal solid waste facilities that meet municipal bylaws. *2012*
- 2.3.2 Foster market development for recycled materials. *On-going*
  - (a) Evaluate a business case for a regional scale recycling service delivery model. *2010*
  - (b) Review desirability, feasibility and opportunity for establishing a non-profit organization to facilitate the development of recycling businesses and markets, along the lines of the 'London Remade' model in the U.K. *2012*
  - (c) Subject to the results of 2.3.2 (a) and (b), establish a regional role in processing and marketing of recycled materials, a land acquisition strategy for required recycling facilities, and enhanced policy-based initiatives to promote local recycled content in consumer goods. *Ongoing*

### MUNICIPALITIES WILL:

- 2.3.3 Facilitate the siting of private sector recycling activities. *2012*
  - (a) Review zoning bylaws to remove unnecessary impediments to and encourage recycling and material recovery activities in appropriately zoned areas. *2012*

- 2.3.4 Work with Metro Vancouver on the evaluation of regional scale recycling facilities and development of recycling markets. *On-going*

### ACTIONS REQUESTED OF OTHER GOVERNMENTS AND AGENCIES:

- 2.3.5 Provincial and Federal Governments to identify and establish minimum post-consumer recycled content requirements for consumer goods. *2012*

## Strategy 2.4: Target demolition, land clearing and construction (DLC) sector for increased reuse and recycling

Although the DLC sector has very high recycling rates due to high levels of concrete and asphalt recycling, there are significant opportunities to improve with respect to a variety of other materials such as wood and roofing.

### METRO VANCOUVER WILL:

- 2.4.1 Encourage reuse of wood. *2010*
  - (a) Examine and, where feasible, implement incentives for reuse and remove barriers to re-use of wood waste. *2010*
  - (b) Develop and implement information and education programs on the reuse and effective recycling of DLC waste. *2010*
- 2.4.2 Implement waste reduction strategies directed toward diverting DLC waste from disposal while supporting opportunities for beneficial use. *On-going*
  - (a) Encourage the role of building supply retailers and producers in the collection of DLC material for recycling. *On-going*
  - (b) Provide areas for separated recyclable DLC materials at Eco-Centres and at transfer stations as they are upgraded. *On-going*

2.4.3 In collaboration with municipalities and industry groups, develop a policy and amendment to this plan to regionally mandate DLC recycling at the job site by December 2011. A schedule for implementation will be part of the policy.

2011

2.4.4 Review existing DLC recycling and processing capacity, project future needs and develop a strategy to address any identified gaps.

2012

**MUNICIPALITIES WILL:**

2.4.5 Work with Metro Vancouver to develop a policy and amendment to this plan to regionally mandate DLC recycling at the job site by December 2011.

On-going

(a) Review municipal DLC permitting processes with a view to requiring waste management plans as a condition of such permits.

On-going

(b) Review the desirability and feasibility of deposit systems or other financial incentives to increase enforcement of DLC waste management plans.

On-going

**ACTIONS REQUESTED OF OTHER GOVERNMENTS AND AGENCIES:**

2.4.6 Provincial Government to expand the inclusion of the reuse of wood in building codes.

On-going

## Strategy 2.5: Reduce paper and paperboard being disposed

14% of the disposed waste stream is made up of paper and paperboard, much of which should be included in the existing recycling programs. Food contaminated paper which cannot be recycled can be composted along with other organics to produce a reusable and beneficial product.

**METRO VANCOUVER WILL:**

2.5.1 In collaboration with municipalities, conduct pilot programs to determine the most effective method of reducing unwanted junk mail and other publications and act accordingly on the results.

On-going

2.5.2 Promote reduced paper use and increase paper recycling opportunities in the community and businesses.

On-going

(a) Carry out a community social marketing campaign to determine and overcome barriers to reducing the use of and increasing the recycling of paper in schools and community facilities.

On-going

(b) Carry out a targeted outreach campaign to business to determine and overcome barriers to reducing the use of and increasing the recycling of paper.

On-going

**MUNICIPALITIES WILL:**

2.5.3 Collaborate with Metro Vancouver in junk mail reduction pilot programs and community social marketing programs in community facilities.

On-going

## Strategy 2.6: Target organics for recovery

Food waste comprises 13% of the waste disposed. This, along with yard and garden waste and some paper and paperboard can be composted together in a source separated stream to produce a beneficial and marketable product.

### METRO VANCOUVER WILL:

- 2.6.1 Evaluate options for processing of organics with biosolids and other utility residuals. *2010*
- (a) Complete trials on commingling food waste with wastewater solids to produce bio-fuels. *2010*
- (b) Determine costs and benefits of commingling biosolids with other residuals. *2010*
- (c) Bring forward appropriate actions based on results of 2.6.1 (a) and 2.6.1 (b). *2010*
- 2.6.2 Divert organics from the waste stream *On-going*
- (a) Establish one or more organics processing facilities. *On-going*
- (b) Determine which paper and paperboard products are suitable for processing at an organics management facility. *On-going*
- (c) In collaboration with municipalities, develop and implement a work plan for the diversion of organic waste, including food waste, from:
- i) single family residences. *On-going*
  - ii) multi-family residences. *On-going*
  - iii) the ICI sector. *On-going*
- (d) Develop and implement supporting communication programs for 2.6.2 (c). *On-going*

### MUNICIPALITIES WILL:

- 2.6.3 In collaboration with Metro Vancouver, develop and implement a work plan for the diversion of organic waste from single family residences, multi-family residences, and the ICI sector, including appropriate supporting communication programs. *On-going*
- (a) Municipalities will divert organics from the waste stream to a Metro Vancouver or alternative licensed organics processing facility. *On-going*
- (b) Municipalities will report the tonnage of diverted organic waste to Metro Vancouver in the event that organics are delivered to licensed non-regional processing facilities. *On-going*

## Strategy 2.7: Target plastics for increased recycling

Many plastics can be used to create new products. Recycling plastics reduces the amount of waste that must be transported, treated, and landfilled and conserves a non-renewable resource.

### METRO VANCOUVER WILL:

- 2.7.1 Expand the recycling of plastics in the residential and commercial sectors. *2011*
- (a) Establish a standard for municipal programs for collection of plastics based on market strength. *2011*
- (b) In cooperation with retail partners and municipalities, undertake social marketing pilot programs to reduce the use of disposable take-out food and beverage packaging including plastic and other disposable bags. *2011*

### MUNICIPALITIES WILL:

- 2.7.2 Work with Metro Vancouver on programs to reduce the use of disposable take-out food and beverage packaging including plastic and other disposable bags. *2011*

**ACTIONS REQUESTED OF OTHER GOVERNMENTS AND AGENCIES:**

- 2.7.3 The Provincial Government to develop EPR programs for all plastics that provide incentives for alternatives to non-recyclable plastics. *On-going*
- 2.7.4 The Provincial and Federal Governments to require all plastic material sold in BC to have a material code identifying its composition. *On-going*

**Strategy 2.8: Target multi-family and industrial, commercial and institutional (ICI) sectors to improve diversion rates**

Multi-family residences and the commercial sector have relatively low diversion rates, in part because many premises do not have adequate facilities to accommodate recycling.

**METRO VANCOUVER WILL:**

- 2.8.1 Develop bylaws to require recycling in all multi-family and commercial buildings and complexes. *2011*
- (a) Develop a model bylaw and enforcement model to require recycling in multi-family and commercial buildings. *2011*
- (b) Create an advisory service for recycling programs for multi-family and commercial buildings. *2011*

**MUNICIPALITIES WILL:**

- 2.8.2 Work with Metro Vancouver to implement recycling in multi-family and commercial buildings. *2011*

## Goal 3: Recover Energy from the Waste Stream After Material Recycling

The following strategies will increase processing of the waste remaining after recycling in order to provide the highest beneficial use to society.

### Strategy 3.1: Use Waste-to-Energy to provide electricity and district heating

Waste-to-Energy facilities most effectively and efficiently extract energy from the waste stream remaining after recycling and when combined with district heating can reduce the environmental impacts of energy use within the region. The planned capacity of such facilities should be compatible with waste diversion targets and initiatives and projected waste flows which remain after such diversion.

#### METRO VANCOUVER WILL:

3.1.1 Continue use of existing waste-to-energy facility in Burnaby.

- (a) Use the facility at its optimal capacity to recover available energy in the waste remaining after recycling for district energy and electricity generation. *On-going*
- (b) Continue to improve environmental performance of the facility with improved technologies and monitor performance to ensure compliance with environmental regulations and objectives. *On-going*

3.1.2 Expand the use of waste-to-energy within the region. *2015*

- (a) Establish up to 500,000 tonnes per year of new waste-to-energy capacity within the region.

- (b) Ensure implementation of new waste-to-energy capacity maximizes energy recovery for use in district heating, industrial applications and electricity generation.
- (c) Monitor trends in waste reduction, recycling and waste flows and implement additional waste-to-energy capacity if, and only if, justified on the basis of these trends.
- (d) Scale any additional waste-to-energy capacity so that total waste-to-energy capacity in the region does not exceed the most probable minimum waste flow projected over the economic life of those facilities.
- (e) Monitor the waste-to-energy facility (ies) to ensure compliance.

3.1.3 Locate new waste-to-energy capacity within the Region on the basis of: *2015*

site availability; suitability of site for providing district heating from recovered energy; potential for site to optimize network of transfer stations; results of local screening level impact assessment and triple bottom line analysis; and results of community consultation process for each potential site.

3.1.4 Ensure that new waste-to-energy facilities are designed to maximize the environmental, financial and social benefits of facilities. *2015*

- (a) Evaluate cost/benefits of proposed new facilities over their lifetime, including construction, commissioning, operation and maintenance, future retrofits and decommissioning impacts.
- (b) Conduct an environmental impact assessment of the waste-to-energy facility(ies), based on applicable provincial and federal government requirements.

- (c) Evaluation criteria will include: use of best available commercial technology; emissions outperform applicable environmental standards; alignment with sustainability principles; electricity and district heating production; beneficial use of ash; metals recovery; potential local job creation; and opportunities for research and education.
- 3.1.5 Recover metals and ash from new and existing waste-to-energy facilities for beneficial use. *On-going*
  - (a) Work with regulatory agencies to identify and remove barriers to beneficial use of ash.
  - (b) Maximize metal recovery from the waste stream after recycling.
  - (c) Process bottom and fly ash to generate products for beneficial use.
  - (d) Use processed bottom and fly ash beneficially for highest value applications available.
  - (e) Establish supply agreements to provide bottom and fly ash for beneficial use.
- 3.1.6 Recover energy from regional utility materials that cannot be recycled, including liquid waste and water utilities *On-going*
  - (a) Recover energy from drinking water treatment processes, such as spent activated carbon that cannot be recycled.
  - (b) Use waste-to-energy to process grit and screenings from wastewater treatment for beneficial uses, where appropriate.
  - (c) Use reclaimed water from wastewater treatment plants in waste-to-energy steam generation or district heating, if viable.

### Strategy 3.2: Recover energy from other solid waste management facilities

Valuable methane in landfill gas will be captured and used to generate clean electricity or heat.

#### MUNICIPALITIES (CITY OF VANCOUVER) WILL:

- 3.2.1 Recover landfill gas from Vancouver Landfill and strive to maximize the beneficial use of the recovered gas. *On-going*

### Strategy 3.3: Utilize non-recyclable material as fuel

Some materials cannot be recycled. However, such materials can provide a valuable source of fuel, replacing virgin fossil fuels.

#### METRO VANCOUVER WILL:

- 3.3.1 Direct recoverable loads of combustible material received at transfer stations to public or private energy recovery facilities *2012*
- 3.3.2 Ban wood from landfill disposal. *2012*

#### MUNICIPALITIES (CITY OF VANCOUVER) WILL:

- 3.3.3 Collaborate with Metro Vancouver in ensuring actions 3.3.1 and 3.3.2 are carried out at solid waste management facilities operated by the City of Vancouver. *2012*

#### ACTIONS REQUESTED OF OTHER GOVERNMENTS AND AGENCIES:

- 3.3.4 Provincial Government to develop material and energy requirements for existing and future stewardship programs to use the non-recyclable portion of returned material as fuel rather than landfilling. *2012*

## Goal 4: Dispose of All Remaining Waste in Landfill, after Material Recycling and Energy Recovery

### Strategy 4.1: Utilize the Vancouver Landfill as a disposal site

Waste will remain after recycling and energy recovery. Additionally, as a result of ensuring that waste-to-energy facilities are sized to be compatible with waste reduction and diversion objectives, there will be residual (post recycling) waste flows which exceed the aggregate capacity of the region's waste-to-energy facilities. Such waste must be disposed of in an environmentally sound and economically efficient manner. The Vancouver Landfill provides a local solution for remaining waste.

#### METRO VANCOUVER WILL:

- 4.1.1 Use the Vancouver Landfill to dispose of any remaining waste not directed to waste-to-energy facilities, subject to any fixed limits identified in the Operational Certificate of the landfill, related contracts, agreements between Vancouver, Delta, and Metro Vancouver and regulations. *On-going*
- (a) Monitor the Vancouver Landfill to ensure compliance.
- 4.1.2 Report annually on the remaining capacity of the waste management system and prior to the closure of Vancouver Landfill, reassess the region's waste-to-energy and disposal options. *On-going*

#### MUNICIPALITIES (CITY OF VANCOUVER AND THE CORPORATION OF DELTA) WILL:

- 4.1.3 Work with Metro Vancouver to accommodate residual waste flows at the Vancouver Landfill subject to any fixed limits identified in the Operational Certificate of the landfill, related contracts, agreements and regulations. *On-going*
- 4.1.4 Where limits in the Operational Certificate, contracts, agreements and regulations appear to work contrary to the overall interests of the regional community, review the particular provisions in good faith with the Province, Metro Vancouver and any other involved party to determine if there is a solution acceptable to all affected parties. *On-going*

### Strategy 4.2: Ensure a disposal site is available for DLC waste

Notwithstanding efforts to increase recycling, local public and private disposal sites for DLC waste are expected to reach their capacity in the near future. Collaboration with local and out-of-region stakeholders is necessary to anticipate DLC waste flows and identify future disposal sites.

#### METRO VANCOUVER WILL:

- 4.2.1 Assess long-term disposal of demolition, landclearing, and construction (DLC) waste remaining after recycling in collaboration with the private sector, neighbouring regional districts and First Nations communities. *On-going*
- 4.2.2 Identify disposal sites for DLC waste remaining after recycling that will be available when existing disposal facilities reach their capacity. *On-going*

### Strategy 4.3: Establish contingency disposal sites

During the implementation of, or, following the implementation of Goal 3, if waste-to-energy capacity and/or local landfill capacity do not provide adequate disposal capacity, Metro Vancouver will need to use out-of-region landfill(s) for disposing of non-recyclable waste.

#### METRO VANCOUVER WILL:

#### 4.3.1 Ensure adequate landfill capacity for:

- non-combustible and non-recyclable material; and
- municipal solid waste in excess of waste-to-energy and in-region landfill capacity (including allowances for variability in waste flows and short term operational disruption), and non-recyclable ash.

*On-going as required*

4.3.2 If sufficient waste-to-energy or landfill capacity is not available in the Region, this plan explicitly permits Metro Vancouver to seek and utilize the best available out-of-region landfill(s) for the disposal of remaining waste, subject to that facility having appropriate permits, from the local permitting jurisdiction in which it is located, to accept such waste.

*On-going as required*

(a) Monitor contingency disposal site(s) for performance and compliance. *On-going*

### Strategy 4.4: Use adaptive management to address evolving needs

A key feature of the plan is adaptive management—monitoring progress, identifying challenges, and finding solutions to overcome challenges. Through monitoring, assessment, and collaboration, Metro Vancouver and its members will continue to adapt and evolve their solid waste management operations and infrastructure and create more resilient and adaptable systems.

#### METRO VANCOUVER WILL:

4.4.1 In the event of circumstances such as an operational disruption or closure at a facility identified in the Plan, the region will be prepared to send surplus waste to an out-of-region landfill until sufficient processing or disposal capacity becomes available in the region. Permitted landfill(s) will be selected based on:

- (a) ability to provide service on a short term or interim basis
- (b) sustainability principles. *On-going*

4.4.2 Continue to assess the success of initiatives outlined in the Plan against the overall trends in waste generation and the performance of waste-to-energy facilities to determine the need for an emphasis of future resource allocations to the various strategies and actions. *On-going*

4.4.3 Continue to receive advice from the Waste Management Committee. *On-going*

4.4.4 In collaboration with municipalities, biennially produce a progress report on plan implementation for distribution to the Ministry of Environment that:

- (a) summarizes progress from the previous two years on regional and municipal plan implementation, the status of performance measures, and relevant education and outreach programs.
- (b) includes summaries and budget estimates for proposed Metro Vancouver and municipal ISWRMP implementation programs for the subsequent two calendar years.

*On-going every two years*

4.4.5 Will obtain public feedback on the report by making the report available through Metro Vancouver's website and by holding a special meeting of the Metro Vancouver Waste Management Committee to receive public comments and input on the report.

*On-going every two years*

4.4.6 In collaboration with members and the Ministry of Environment, undertake a comprehensive review and update of the plan on an ten year cycle.

*On-going every ten years*

**MUNICIPALITIES WILL:**

4.4.7 Work with Metro Vancouver to give effect to 4.4.4, 4.4.5, and 4.4.6. *On-going*

# Performance Measures

---

Metro Vancouver will develop a waste accounting system for the entire solid waste management system, identifying the quantities generated, recycled, composted, used for energy recovery, and disposed in landfill. Comparison of per capita disposal values will provide the most accurate assessment of progress of the plan.

The following performance measures will monitor progress in achieving the specific goals. Performance should be considered in the context of 2008 waste management data. Performance Measures for each goal are:

## Goal 1: Minimize Waste Generation

- Waste generation per capita tracked year-over-year
- Waste generation per capita for residential and commercial waste tracked year-over-year
- Increase of product stewardship initiatives by senior governments to more than two initiatives every three years

## Goal 2: Maximize Reuse, Recycling and Material Recovery

- Overall diversion rate tracked year-over-year
- Diversion rate per capita tracked year-over-year
- Tracking of material recycling tonnage

## Goal 3: Recover Energy from the Waste Stream After Material Recycling

- Energy outputs from solid waste and its beneficial use tracked year-over-year
- Energy outputs recovered from materials that cannot be recycled through recycling efforts and stewardship programs
- Greenhouse gas production tracked year-over-year

## Goal 4: Dispose of all Remaining Waste in Landfill, after Material Recycling and Energy Recovery

- Quantity of treated and untreated waste per capita going to landfill is tracked year-over-year

# Financial Plan

---

The costs of operating the integrated solid waste and resource recovery system, including initiatives to encourage waste reduction, reuse and recycling, will be funded from revenues from users of the system (principally the tipping fee) and from revenues from recovered resources (recycled materials and recovered energy).

The private sector will have an economic incentive to invest in waste diversion initiatives, arising primarily from the difference between the cost of recycling and the tipping fee for waste disposal at public facilities. The regional tipping fee will continue to be set at a rate to recover Metro Vancouver's cost to manage the solid waste system. The tipping fee for many recyclable materials will be reduced or waived at regional facilities to encourage participation.

As the outcomes of this plan contribute to the achievement of provincial and federal environmental and energy goals, and as regional and municipal financial resources are limited, and as public investment in the actions set out in this plan will assist in achieving the goals of this plan and are in the public interest, financial support from provincial and federal sources will be sought to implement waste diversion programs and develop facilities identified in the Plan.





PRINTED IN CANADA ON RECYCLED PAPER