



**GARBAGE ONLY
PLEASE**



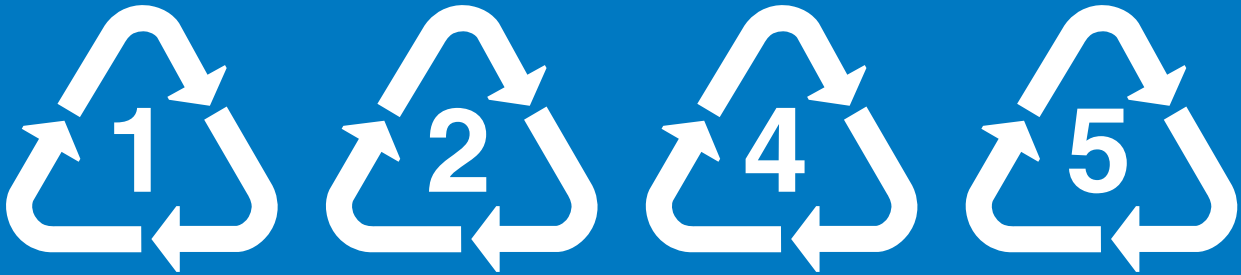
**PAPER TOWELS
ONLY PLEASE**



**FOODSCRAPS
ONLY PLEASE**



REFUNDABLES



CONTAINERS



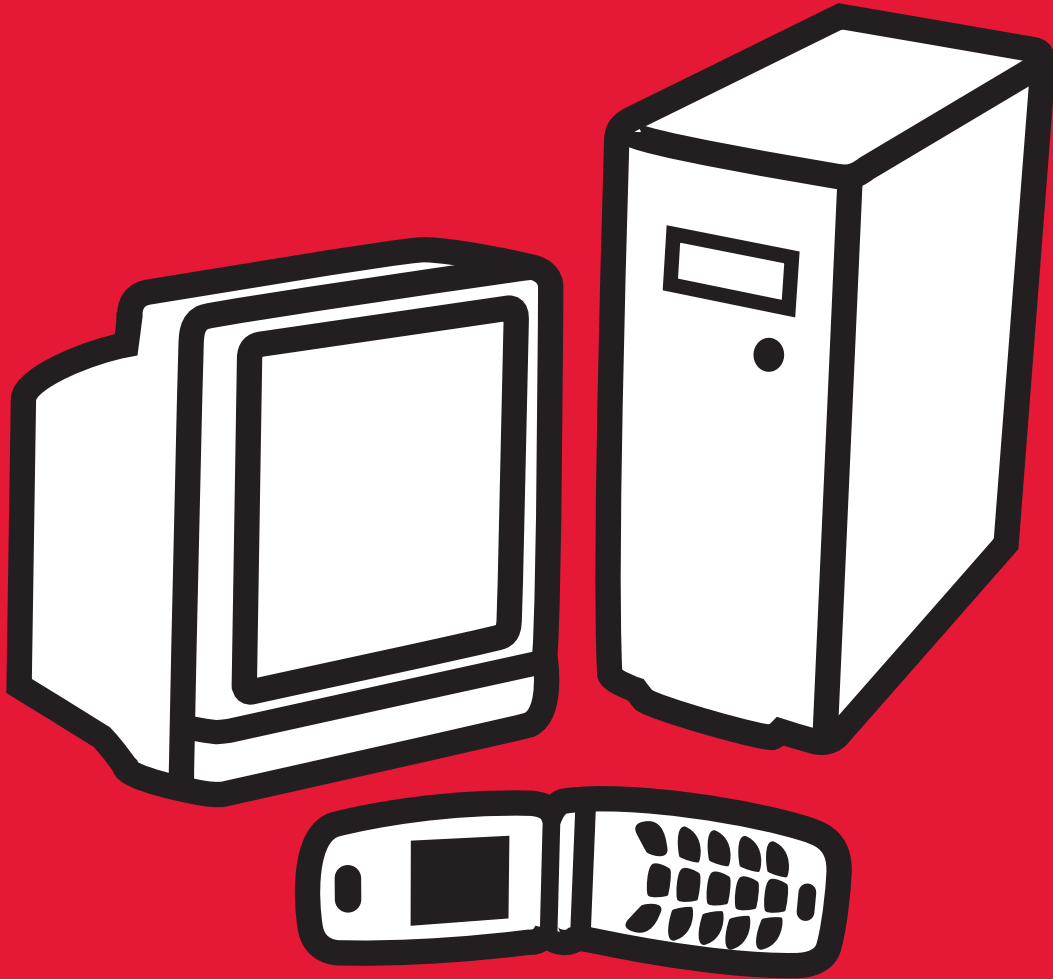
PAPER TOWELS
FOOD-SOILED PAPER



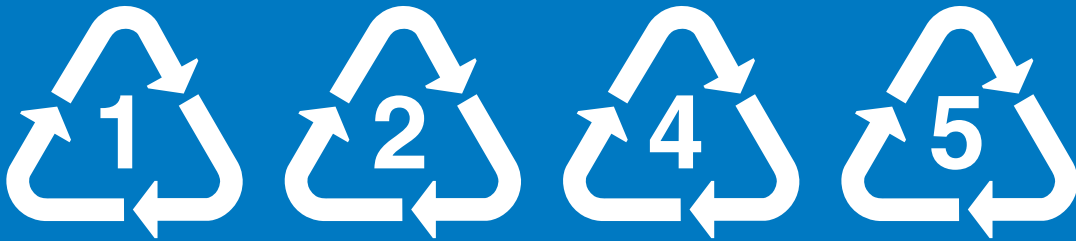
SOFT PLASTICS



MIXED PAPER



**END OF LIFE
ELECTRONICS**



CONTAINERS



OTHER RIGID PLASTICS