

## 2006 Census Bulletin #9

# Mobility and Migration in Metro Vancouver

### Introduction

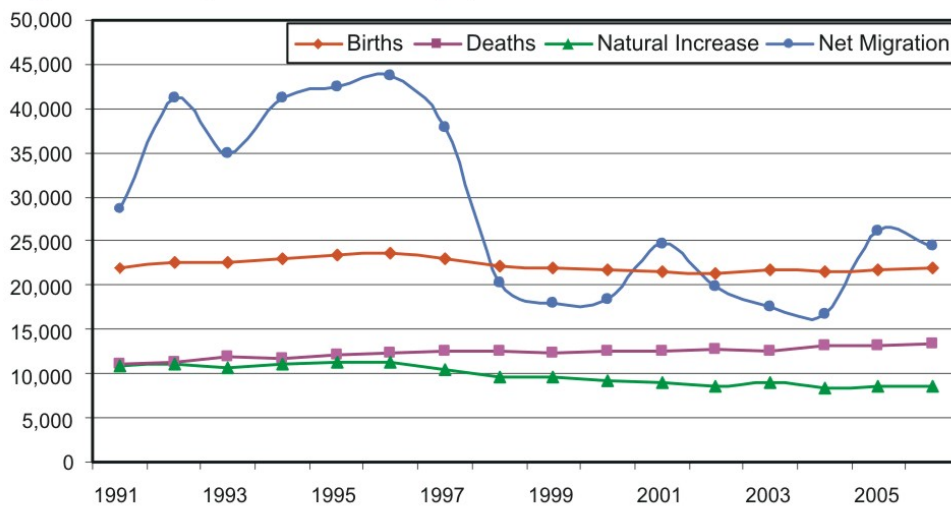
**Mobility**<sup>1</sup> is the major factor in determining growth in Metro Vancouver. This bulletin provides an overview of changes in mobility between 2001 and 2006 and includes information on:

- ◆ Components of Growth;
- ◆ Mobility in Metro Vancouver; and,
- ◆ Municipal and Census Tract Mobility Analysis.

### Components of Growth in Metro Vancouver

Change in the region's population is driven by two factors: natural increase (births minus deaths) and net migration. Figure 1 shows that the number of births in the region have remained relatively stable between 1991 and 2006 while mortality rate (the number of deaths) has risen over the same time period, creating a slight yet steady declining population change attributed to the natural increase (births minus deaths). Most of the growth in the region is attributed to net migration, which can vary significantly over the years, as shown in Figure 1.

**Figure 1: Components of Change, Metro Vancouver 1991 - 2006**



Source: BC Stats (PEOPLE 33)

The 2006 Census data on mobility provides insight into the patterns of movement by the residents of Metro Vancouver based on their living location 5 years prior to the census. The next section will provide information on how many people moved between 2001 and 2006, as well as where they were residing 5 years prior to the 2006 Census.

<sup>1</sup> **Census Definitions** – Mobility refers to the relationship between a person's usual place of residence on Census Day and his or her usual place of residence five years earlier. A person is classified as a **non-mover** if no difference exists. Otherwise, a person is classified as a **mover** and this categorization is called mobility status (5 years ago). **Non-movers** are persons who, on Census Day, were living at the same address as the one at which they resided five years earlier. **Movers** are persons who, on Census Day, were living at a different address from the one at which they resided five years earlier.

## Mobility in Metro Vancouver<sup>2</sup>

Based on the 2006 Census, a higher proportion of Metro Vancouver residents moved in the past 5 years than the national average. Between 2001 and 2006, 52% of Metro Vancouver residents had the same address in 2006 and as they had in 2001, compared to the national average of 59% and the provincial average of 53%.

Table 1 indicates that in 2006 48% of the population (949,080 people) lived somewhere else 5 years earlier. 51% of the movers (482,670 people) in Metro Vancouver changed place of residence within this region. This is similar to the national data that shows approximately 6.5 million of the 12 million movers (54% of movers) changed location within the local municipality. Another 25% of movers in Metro Vancouver moved to the region from another province or territory, while 6% moved to Metro Vancouver from elsewhere in Canada.

**Table 1: Mobility Status (5 Years Ago) in Canada, BC, and Metro Vancouver, 2006**

Mobility Status	Canada			British Columbia			Metro Vancouver		
	#	% of total	% of movers	#	% of total	% of movers	#	% of total	% of movers
Population age 5 years and older	29,544,485	100%		3,871,915	100%		1,992,495	100%	
Non-Movers (Did not move)	17,457,170	59%		2,067,790	53%		1,043,415	52%	
<b>Movers</b>	<b>12,087,315</b>	<b>41%</b>	<b>100%</b>	<b>1,804,125</b>	<b>47%</b>	<b>100%</b>	<b>949,080</b>	<b>48%</b>	<b>100%</b>
Movers: Non-migrant	6,507,905	22%	54%	904,705	23%	50%	482,670	24%	51%
Movers: Intraprovincial migrants	3,566,790	12%	30%	528,500	14%	29%	240,040	12%	25%
Movers: Interprovincial migrants	852,580	3%	7%	164,715	4%	9%	60,680	3%	6%
Movers: External migrants	1,160,040	4%	10%	206,210	5%	11%	165,685	8%	17%

Source: Statistics Canada, 2006 Census

Metro Vancouver has a noticeable higher percentage of movers from outside of Canada as compared to the national and provincial data. 8% of region's population reported living outside of Canada 5 years prior to the 2006 Census which is double the national share of 4% of the total population.

## Patterns of Mobility in Metro Vancouver

Based on the 2006 Census, a higher proportion of Metro Vancouver residents in 2006 reported that they have not moved in the past 5 years than previous census periods. As shown in Table 2, approximately 1 in 4 people moved within the same municipality in 2006, and that is true for the past 3 Census periods (movers: non-migrant).

Migration between municipalities within Canada has had a declining influence on growth in Metro Vancouver. In 2006 15% of people reported living in another municipality in Canada (either within BC or in another province or territory) five years earlier. This is a decline from the 1996 Census, when 21% of the population reported living in another municipality in Canada five years earlier.

<sup>2</sup> **Movers: Non-migrants** are movers who, on Census Day, were living at a different address, but in the same census subdivision (CSD) as the one they lived in five years earlier.

**Movers: Intraprovincial migrants** are movers who, on Census Day, were living in a different census subdivision from the one in which they resided five years earlier, in the same province.

**Movers: Interprovincial migrants** are movers who, on Census Day, were living in a different census subdivision from the one in which they resided five years earlier, in a different province.

**Movers: External migrants** who, on Census Day, were residing in a different CSD five years earlier (internal migrants) or who were living outside Canada five years earlier.

**Table 2: Mobility Status (5 Years Ago) Metro Vancouver, 1996, 2001, 2006**

Five-Year Mobility Status	1996 Census			2001 Census			2006 Census		
	# of People *	% of Total	% of Movers	# of People *	% of Total	% of Movers	# of People *	% of Total	% of Movers
<b>Total Population *</b>	1,701,900	100%		1,861,975	100%		1,992,495	100%	
Non-movers	743,885	44%		970,840	52%		1,043,415	52%	
Moved in Past 5 Years	958,020	56%	100%	891,135	48%	100%	949,080	48%	100%
Movers: Non-migrant	432,350	14%	45%	432,825	12%	49%	482,670	12%	51%
Movers: Intraprovincial	231,055	14%	24%	223,410	12%	25%	240,045	12%	25%
Movers: Interprovincial	113,515	7%	12%	66,785	4%	7%	60,675	3%	6%
Movers: External Migrant	181,100	11%	19%	168,120	9%	19%	165,685	8%	17%

\* (Age 5 Years and Older)

Source: Statistics Canada, 1996, 2001, 2006 Census

### Mobility in Metro Vancouver Municipalities

Table 3 looks at the mobility status by individual municipality. The most popular destination for external (international) migrants were the City of Vancouver (56,260 people), Surrey (26,025 people) and Burnaby (21,655 people). The municipalities with the highest percentage of the population residing outside of Canada prior to the 2006 Census are the City of Burnaby (11%), the City of Richmond (11%) and Electoral Area A/UBC (35%). The municipalities with the lowest percentage of the population residing outside of Canada prior to the 2006 Census are Maple Ridge, Anmore and Lions Bay (2%), as well as the Township of Langley, Pitt Meadows and White Rock (3%).

Municipalities with the most migrants from other provinces were the City of Vancouver (24,450 people), Surrey (8,980 people) and Burnaby (5,025 people). The municipalities with the highest percentage of the population residing in another province prior to the 2006 Census are Electoral Area A/UBC (6%) and the City of White Rock (5%).

The municipalities with the highest percentage of the population who moved within their own municipality between 2001 and 2006 are Surrey (30%), the City of Vancouver (28%) and the City of North Vancouver (28%). In contrast municipalities with a low percentage of the population who moved within the same municipality between 2001 and 2006 are Bowen Island, Pitt Meadows and Port Moody (28% each). Additional information related to the mobility status by municipality can be found in Table 3.

### Mobility Status in Metro Vancouver Neighbourhoods

Maps 1 and 2 show how neighbourhoods in Metro Vancouver are impacted by mobility. Specifically, Map 1 shows census tracts where the percentage of population that resided at a different address 5 years prior to the 2006 Census. The pattern that is reflected in the data shows that Regional Town Centres, neighbourhoods along the SkyTrain route in Burnaby and New Westminster as well as many parts of Surrey have high percentages of their population that resided elsewhere 5 years prior to 2006.

Map 2 is focused on international migration. This map shows census tracts with high percentage of movers who had previously resided outside of Canada. It shows that international mobility is an important component of population changes in areas such as the downtown core of Vancouver, Metrotown in Burnaby, and the City Centre of Richmond.

**Table 3: Mobility Status (5 Years) for Metro Vancouver Municipalities, 2006**

Municipality	Population (5 yrs +)	Non-Mover		Mover		Mover: Non-migrant		Mover: Intra-provincial		Mover: Inter-provincial		Mover: External migrants	
		#	%	#	%	#	%	#	%	#	%	#	%
Anmore	1,630	765	47%	870	53%	190	12%	625	38%	15	1%	40	2%
Belcarra	645	450	70%	195	30%	65	10%	125	19%	0	0%	0	0%
Bowen Island	3,165	2,010	64%	1,150	36%	455	14%	465	15%	100	3%	125	4%
Burnaby	191,335	99,110	52%	92,220	48%	40,225	21%	25,315	13%	5,025	3%	21,655	11%
Coquitlam	107,910	61,665	57%	46,245	43%	18,280	17%	16,220	15%	2,425	2%	9,315	9%
Delta	91,200	57,310	63%	33,890	37%	16,285	18%	11,830	13%	1,850	2%	3,925	4%
Electoral Area 'A'	10,370	2,415	23%	7,955	77%	2,305	22%	1,365	13%	645	6%	3,635	35%
Langley City	22,025	10,355	47%	11,675	53%	4,475	20%	5,335	24%	815	4%	1,050	5%
Langley Township	87,855	50,750	58%	37,100	42%	17,110	19%	15,270	17%	2,150	2%	2,565	3%
Lions Bay	1,250	890	71%	360	29%	115	9%	190	15%	35	3%	20	2%
Maple Ridge	64,250	34,775	54%	29,475	46%	14,525	23%	12,050	19%	1,445	2%	1,450	2%
New Westminster	54,925	26,040	47%	28,885	53%	10,755	20%	12,245	22%	1,660	3%	4,235	8%
North Vancouver City	42,715	19,920	47%	22,795	53%	12,085	28%	5,520	13%	1,395	3%	3,800	9%
North Vancouver District	77,815	49,795	64%	28,020	36%	15,660	20%	5,500	7%	1,720	2%	5,145	7%
Pitt Meadows	14,725	8,655	59%	6,065	41%	2,055	14%	3,255	22%	345	2%	410	3%
Port Coquitlam	49,410	29,315	59%	20,095	41%	8,500	17%	8,290	17%	1,050	2%	2,250	5%
Port Moody	25,795	13,190	51%	12,600	49%	3,575	14%	6,650	26%	895	3%	1,475	6%
Richmond	165,665	88,030	53%	77,640	47%	41,035	25%	15,570	9%	3,530	2%	17,505	11%
Surrey	367,950	178,940	49%	189,010	51%	109,035	30%	44,970	12%	8,980	2%	26,025	7%
Vancouver	546,665	272,050	50%	274,610	50%	153,475	28%	40,425	7%	24,450	4%	56,260	10%
West Vancouver	40,350	24,605	61%	15,740	39%	7,830	19%	3,300	8%	1,110	3%	3,505	9%
White Rock	17,600	8,630	49%	8,970	51%	3,150	18%	4,385	25%	855	5%	580	3%
<b>Vancouver CMA</b>	<b>1,992,495</b>	<b>1,043,415</b>	<b>52%</b>	<b>949,080</b>	<b>48%</b>	<b>482,670</b>	<b>24%</b>	<b>240,045</b>	<b>12%</b>	<b>60,675</b>	<b>3%</b>	<b>165,685</b>	<b>8%</b>

Mobility status 5 years ago indicates whether the person lived in the same residence on Census Day (May 16, 2006), as he or she did five years before.

*Non-migrant - a person that moved within the same municipality they resided in 5 years before Census Day*

*Intraprovincial migrant - a person who resided in the same Province but different municipality 5 years before Census Day.*

*Interprovincial migrant - a person who resided in a different Province or Territory 5 years before Census Day*

*External migrant - a person who resided in a different Country 5 years before Census Day.*

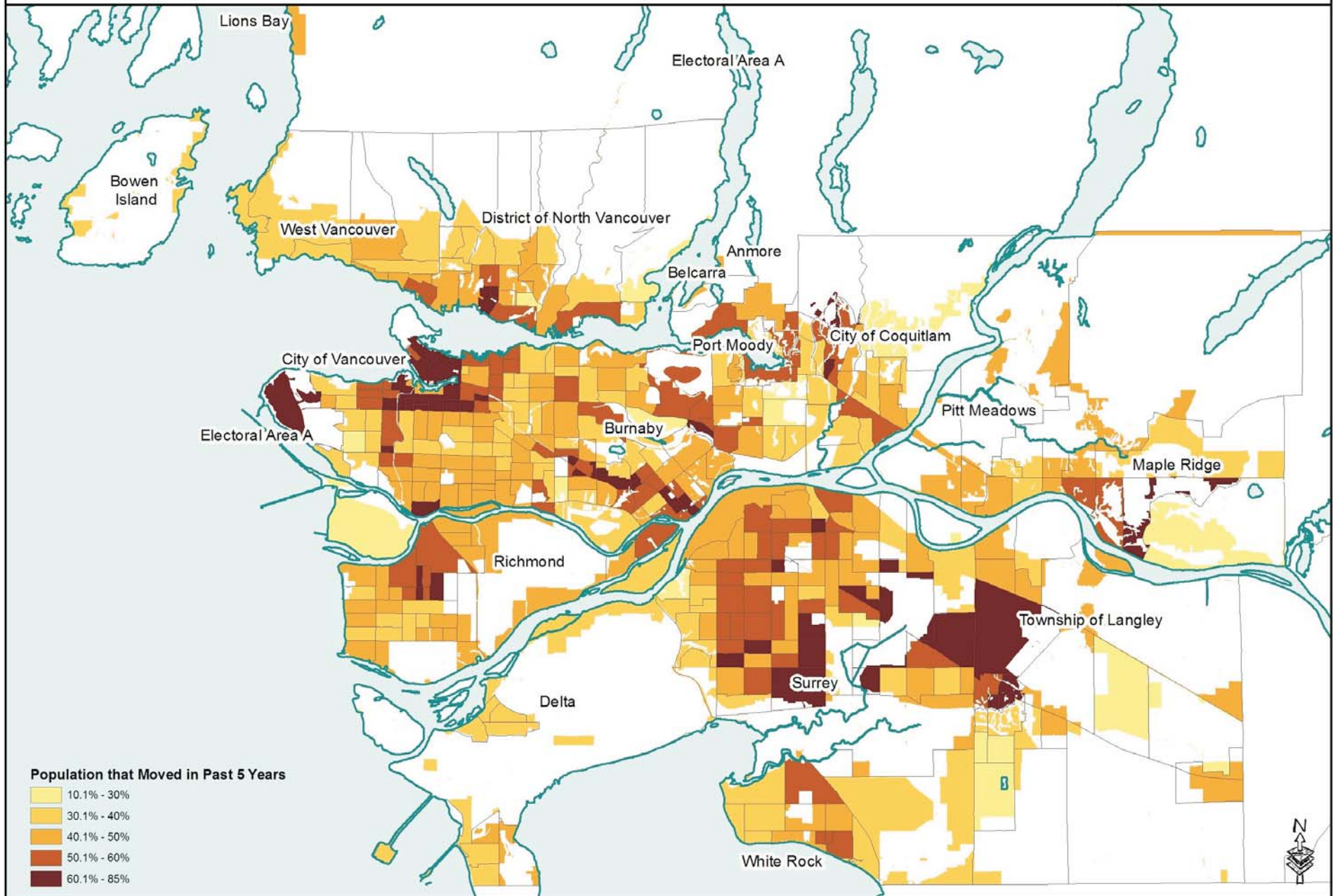
Some of the notable differences between Maps 1 and 2 is that while census tracts near Regional Town Centres in North Vancouver, Langley and Maple Ridge have high percentage of populations identified as movers, they do not have a high percentage of international migrants. This is also true for some neighbourhoods on the North Shore and in the Northeast Sectors.

Areas with high shares of movers tend to be the newly developed neighbourhoods and neighbourhoods with older rental apartment buildings, as reflected on Maps 1 and 2.

### **Conclusions and Observations**

Mobility status provides information about the movement of residents. Metro Vancouver residents are less likely to have moved in the past 5 years than over the past few census periods, but are still more likely to have moved than the national average. The movement from outside of Canada to Metro Vancouver is an important source of new residents to many parts of the region.

**Map 1. 2006 Census: Percentage of Population that Moved in Past Five Years**

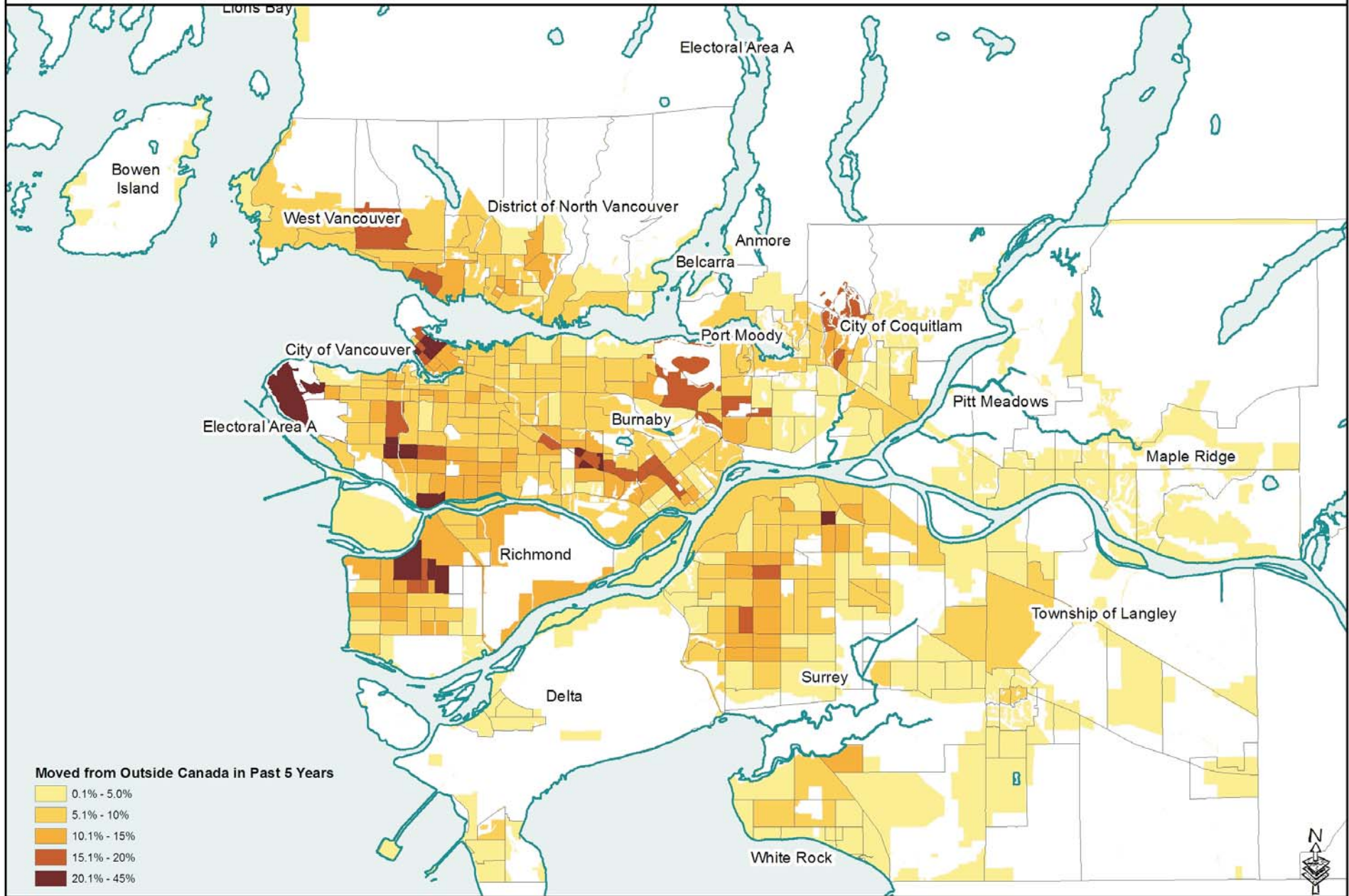


**Note about Census Data.**  
Mobility refers to the relationship between a person's usual place of residence on Census Day and his or her usual place of residence five years earlier. Movers reside in a different address than five years earlier. Data collected for total population age 5 years and older. Agricultural and Green Zone lands are excluded for mapping purposes.  
Source: Statistics Canada, 2006 Census

Prepared: November 2008



**Map 2. 2006 Census: Percentage of Population that Moved from Outside Canada in the Past Five Years**



**Note about Census Data.**

Mobility refers to the relationship between a person's usual place of residence on Census Day and his or her usual place of residence five years earlier.

"External Migrants" refers to people who were living outside Canada five years earlier. Data collected for total population age 5 years and older.

Source: Statistics Canada, 2006 Census

Prepared: November 2008