

FILMING IN THE LSCR

Site Specific Guidelines



Updated
March 2016



Site Specific Film Guidelines
Table of Contents

| | |
|---|------------|
| Application Process _____ | iii |
| General _____ | iv |
| LSCR Access Hours | |
| Gate Access | |
| Security | |
| Greens Guidelines | |
| Inclement Weather _____ | v |
| Fire Restrictions | |
| Vegetation Alteration | |
| Catering / Washrooms / Garbage | |
| Boats and Flotation Devices | |
| Picture Animals and Dogs | |
| Transport Guidelines _____ | vi |
| Special Effects _____ | 1 |
| Vehicle Crash / High Speed Driving | |
| Fire / Explosion / Snow / Fog | |
| Gunfire | |
| Use of Helicopter incl Drones | |
| Approved Sites _____ | 2 |
| Rice Lake Gate / Picnic Area | |
| Rice Lake Area _____ | 3 |
| Tookay Pit | |
| Forkay Lake and Pit | |
| Spur 4 Road and Fish Enhancement Site _____ | 4 |
| Spur 4 | |
| Mid Valley _____ | 5 |
| Bill's Pit (6km) _____ | 6 |
| 6km Cabin | |
| Spur 7 Beach | |
| Mainline/Rice Lake Gate to 9km _____ | 7 |

The purpose of the Filming Guidelines are to permit filming activity while protecting LSCR facilities, operations and maintenance activities, normal use and enjoyment of visitors, and the natural environment. This document provides film productions with site specific requirements and general information to assist with planning and filming within the Lower Seymour Conservation Reserve.

Application Process

Production Company must:

1. Provide 24 hour notice and receive approval to scout in the LSCR. ***Scouting may require a film liaison escort;**
2. Submit a film proposal, via email to the LSCR Foreman, using the LSCR film proposal template;
3. Meet with LSCR Foreman to review the proposed filming activities at least eight (8) working days in advance of the proposed filming;
4. **Once proposal is approved, email the approved filming proposal to filming.info@metrovancover.org and complete an online application at: (<http://www.metrovancover.org/filming/Pages/filming-application-form.aspx>):**

General

LSCR Access Hours

- Filming can occur Monday-Friday. Stat holidays excluded;
- **Move-in and move-outs must occur between 0700-2300 Monday – Friday** (Last Tail-lights at Mount Seymour Parkway and Lillooet Road at 2300). **Saturday and Sunday move-in/outs must occur between 0800-2300. Catering may be permitted to move in and out between 2300-0600**

Gate Access

- PA's are only required at Rice Lake Gate between 6pm and 6am during unit move-in/outs and filming
- If Catering needs access prior to 6am a Metro Vancouver liaison will meet Catering, one person from Locations, and Security at the cemetery gate. Locations will be needed to maintain access at Rice Lake gate with a supplied key until 0600. Ensure Catering knows that are not go through the cemetery gate without the liaison
- A set Security member will be required for the operation of the cemetery gate after hours (not Locations). This person will be supplied with an access key and will be required to control access through this gate. They are solely responsible for film production personnel only. They are not to allow access to anyone else. Card will be collected after the last person leaves and will be issued before gate closes down at the lower cemetery gate

Security

- Security swaps must occur at 0600 and 1750 (be south of Rice Lake Gate prior to 1800)
- All security vehicles must be easily identifiable (i.e. decals, magnetic plates and hi-vis vests)
- MV will only require security in the interest of protecting public safety and environmental concerns. Liability, theft and vandalism concerns are the sole responsibility of the production company
- A key will be assigned to the night security north of Rice lake gate for their **personal** use to get in or out of Rice Lake Gate in case of an emergency. They are not to use it to provide access to anyone. Security is to use intercom at lower cemetery gate for MV security to be let out (phone number is also posted on lower gate)

Greens Guidelines

- Inspection may required any time at the Rice Lake Gatehouse
- Soil/sand/gravel/bark mulch/leaves are not permitted to enter the LSCR
- Green are NOT permitted to source material on their own without pre-approval
- Trees on stands, ferns and other ground cover must be approved prior to use in the LSCR
- Any areas which are disturbed or damaged will be restored to pre-existing conditions or better. This will be done to the satisfaction of the LSCR Foreman
- Any pruning must be cleared by MV liaison. Tie back of vegetation is the preferred method.

- No live tree removal

Inclement Weather

- Wind, rain and other inclement weather conditions may close the Seymour Valley from 2km up the valley due to conditions such as debris torrents, flooding, high flows or tree damage from high winds
- Weather is continuously monitored: closures are often hard to predict prior to 48 hours; contact the LSCR Foreman

Fire Restrictions

- Restrictions will be in place depending on work activity during moderate and high fire hazard ratings
- Full filming closures will occur in extreme fire hazard rating

Catering / Washrooms /Garbage

- No portable toilets will be allowed near watercourses or in any area where fluids could enter a watercourse
- MV garbage facilities are not available for production use
- Parking for production dumpster is available at the 6km pit, 4km pit or at crew park
- Wildlife (bears, coyotes and ravens) are present in the valley year round. Dumpsters must be locked at all times
- No garbage can be stored in the back of open work trucks. It must be transported to dumpster or the dump immediately
- All garbage cans must be equipped with lids
- No grey water disposal along roads out of LSCR

Boats, Flotation devices and waders

- All boats and aquatic equipment including personal watercraft, docks, waders, and SCUBA equipment must be disinfected prior to arrival, or a complete disinfection in the LSCR may occur under the supervision of LSCR staff
- Must follow the MV Water Services' *Aquatic Equipment Cleaning Procedures and Inspection Protocols* for all aquatic equipment. Contact LSCR foreman regarding these procedures. If these procedures have not been performed you will not be allowed entry.

Picture Animals and Dogs

- Vet Certified Health Certificates may be required for animals entering the LSCR
- Ensure you are in compliance with the Controlled Alien Species Regulation under the BC Wildlife Act. Depending on species, Possession of Controlled Alien Species accompanied with a Personal Use Permit and Non-Personal Use Permit; or Temporary possession of Controlled Alien Species accompanied with a Transitory Possession Permit is required. Proof of permit may be requested
- This act prohibits the film industry from: Breeding Controlled Alien Species, Releasing Controlled Alien Species, and Exhibiting Controlled Alien Species

- Working picture animals and approved disability dogs are the only animals permitted in the valley
- All animals required in production must come with a qualified wrangler/s
- All excrements must be removed from site

Transport Guidelines

- Generators must park 30 meters away from any watercourse
- Spill pads **MUST** be placed under and around nozzle when fueling with operator present during fill up duration
- Chlorinated water is not permitted to be brought in
- Metro Vancouver has pre-approved raw water fill up locations for **water trucks**- see liaison
- No idling
- Circus **MUST** always park in the 4km pit

Special Effects

** All special effects must be detailed in the LSCR Filming Proposal Template

Vehicle Crashes and High Speed Driving Scenes

- All fluids must be removed from vehicle in order for collisions or crashes to be considered
- High speed driving scenes will not be permitted in areas close to valve boxes, other infrastructure associated with the water main, and in or around water courses (running or dry)

Fire, Explosions, Artificial Snow, Smoke/Fog

- During moderate or higher fire hazard restriction will be imposed. No liquid pollutant (gas or alcohol) explosions allowed near watercourses
- No diesel to be used in explosions
- All explosions must be complete burns i.e. no materials or objects can be scattered from the explosion
- No damage to surrounding vegetation (leaf burn etc) will be permitted
- Noise levels must not impact surrounding neighbourhoods and possible bird nesting
- MSDS or product identification information must be provided for any special effects products
- No artificial snow products approved to be used in the LSCR

Gunfire

- ¼ round shots or minimum loads may be approved for gunfire. Restrictions may apply during songbird nesting window between March 1st -August 31st
- Automatic weapon fire must be kept to short bursts of less than 5 sec.
- All spent shell casings or cartridges must be collected and removed from site, a metal detector sweep may be requested by the onsite liaison

Helicopters and Drones

- **Use of helicopters and drones must be approved by LSCR Foreman**
- Helicopter and drones must stay between 0km-9km in the Seymour Valley
- Night flying: Helicopter must be equipped to fly at night as per Ministry of Transportation regulations and pilot must have no restrictions on license

Approved Sites

** The Seymour Capilano Filtration Plant and Seymour Falls Dam will not be approved for filming as they're critical drinking water infrastructure for the residents in the Metro Vancouver Region.

Rice Lake Gate / Picnic Area

Location – 0km of Seymour Mainline



- Picnic Area
 - Notification signage for shoots must be posted 1 week prior to activity commencing
 - Additional on set signage and barricades will be required along Trailway and associated trails during prep and shoot
 - PA escorts must be present to get public through set
 - Cable runs across Trailway must be minimized through specific generator parking sites. All cable runs must be clearly marked.
 - Circus Parking – 4km pit or crew park
 - Work Trucks – limited space in the turn-around near Rice Lake Gate

- Rice Lake Gate
 - This is an active working area. Plans must be developed to ensure traffic flow is un-obstructed and regular operations can be maintained.
 - Circus Parking – 4km pit or crew park
 - Work Trucks – limited space in the turn-around near Rice Lake Gate

Rice Lake

Location – 1 km point on Seymour Valley Trailway

Filming is not permitted from March 1st to August 31st at this location due to high public use and presence of wildlife

**This is the highest public use area in the LSCR. Public access must be maintained. The production company must identify an individual to deal with all public issues during prep and shoot

Rice Lake Loop Trail Network

- Electric “golf cart” style vehicles are the only motorized transportation permitted from Trailway to and around the lake trail
- Notification signage must be posted at least 1 week prior to activity commencing
- Work trucks park on the Seymour Mainline and 2 trucks only near wharf allowed
- Circus - 4km pit, crew park or 0.1 km on Mainline corner
- Additional on set signage and barricades may be required during prep and shoot
- Public access must be maintained
- Any cable across the trail must be minimized and clearly marked

Lake

- No gas powered motors permitted. All boats must be equip with electric motors
- All boats, motors and personal aquatic equipment must inspected and disinfected prior to entering the lake or river as per the Alien Invasive Species Disinfection protocol
- No vegetation/aquatic plant removal or alterations to shoreline/lake bottom
- Consideration must be given to fisherman using the lake at the time of shoot. If fishing zones need to be blocked off this must be done prior to commencing shooting

Tookay Pit

- Circus parking must be in 4km
- Work Trucks in 2km parking area is permitted and along road is additional space is needed
- No vegetation/aquatic plant removal or alterations to shoreline/wetland bottom
- Public access must be maintained

Forkay Lake and Pit

- MV operational needs must be maintained. Three minute lock-ups apply
- Both circus and work truck parking can be accommodated at this site
- No vegetation/aquatic plant removal or alterations to shoreline/lake bottom
- No gas powered motors permitted. All boats must be equip with electric motors
- **No** vegetation alteration in 4km pit between March 1st –August 31st
- All boats, motors and personal aquatic equipment must inspected and disinfected prior to entering the lake or river as per Alien Invasive Species Guidelines
- Due to the high wildlife values (e.g nesting birds), filming will not be permitted between March 1st – August 31st in highly vegetated areas

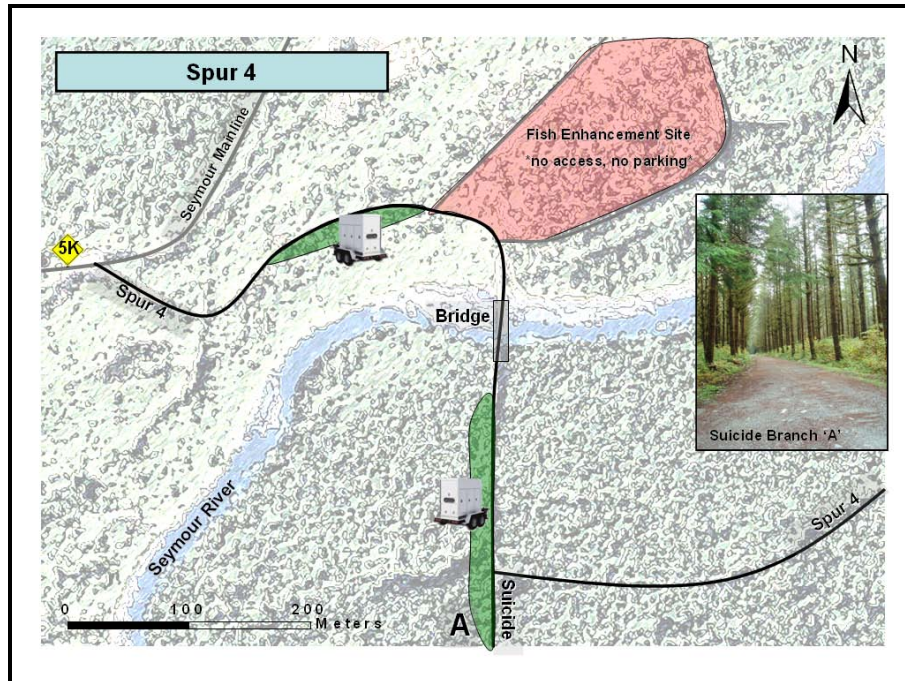
Spur 4

(All circus to park in 4km pit for the below locations. Work trucks only allowed on west side of spur 4 bridge and MUST maintain low bed and emergency vehicles access at all times)

Location – Turnoff is at the 5km point on the Seymour Mainline

There are 3 main areas that make up the Spur 4 Site:

1. Spur 4 Road/Suicide Branch – east of bridge
2. Spur 4 bridge
3. Spur 4 Road – west of bridge
4. Fish Enhancement Site



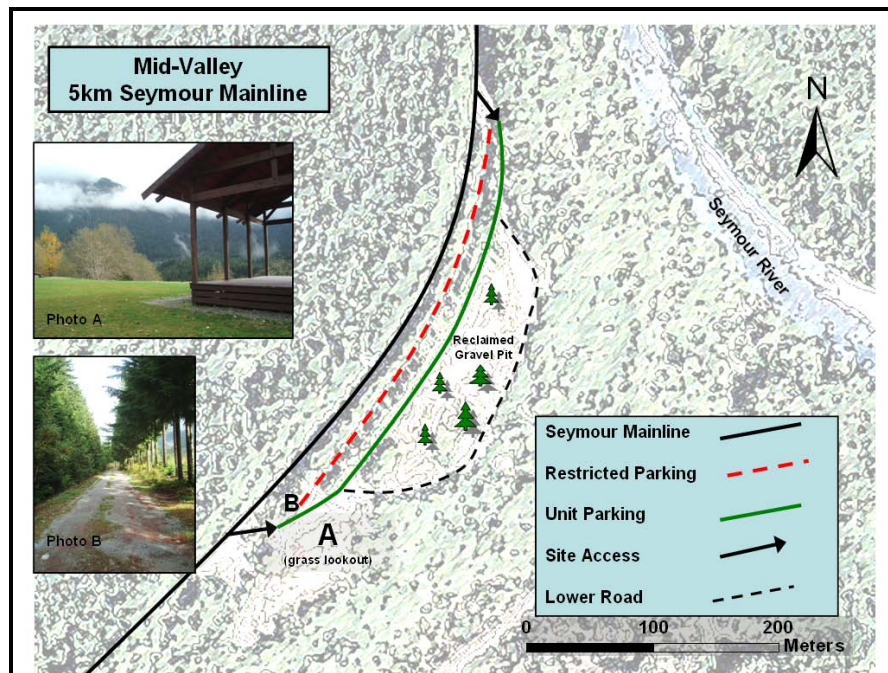
General

- Full lock-ups not permitted on Spur 4- must maintain truck and emergency vehicle access at all times
- Public access must be maintained
- Full lock-ups possible on Suicide Branch and dead end road
- Explosions and special effects allowed to 7km only
- **Spur 4 Road/Suicide Branch – east of bridge**
 - Signage and barriers can be moved, but must be replaced in exact locations
 - Forest needed scenes must use 'filming trail' and adjacent forest east of Seymour East Mainline (Spur 4) at 6km
- **Spur 4 Bridge**
 - Bridge rating 75 tonnes
 - Railings can be removed, but a safety system must be in place for public in the interim. Railing re-installation must be inspected by MV liaison

- **Spur 4 – West of bridge**
 - Generator parking – not within 30 m of Seymour River or Mid Valley Enhancement. Placement should be up the road on a flat surface
 - Public access along the Hydraulic Connector Trail and Fisherman’s must be maintained
 - Work trucks for Spur 4 area, must park on west side
 - No work truck allowed on ramp leading down to river
- **Enhancement Site**
 - Mechanized motors and/or vehicles are not permitted on Mid Valley Enhancement site access roads
 - Filming in wetland is not permitted due to high value wildlife habitat

Mid Valley

Location – 5.2km point on Seymour Mainline Road



- **Grass Lookout**
 - The grass at this site must be protected with plywood or rubber matting. **All lawn damage must be repaired to the satisfaction of the liaison**
 - Rocks, picnic tables, chain link fencing, and shelter can be moved. Must return to their original location undamaged.
- **Restricted Parking Area (Upper gravel road)– Water main**
 - **No vehicular access permitted** for parking or filming

- Parking
 - Access path must be maintained for the Hydraulic Connector Trail through the viewpoint area and down to Spur 4. Road down to the water line bunker (road around outhouses) must be un-obstructed
 - Work trucks can park in Mid-Valley gravel area. Trucks on Mainline must ALL park on East side of road

- Other
 - All digging must be approved by MV liaison as there are many buried utilities in this area

Bill's Pit

Location - 6km point on Seymour Mainline

- Entrance cannot be altered due to water main depth below
- Parking for work trucks
- Circus must park in 4km pit
- Dumpster storage location for mid valley and cabin road shoots

6km Cabin Road

Location – 6km Seymour Mainline

- Filming in the gully south of cabin road is not permitted between **October-March**
- Work trucks must park on east side of road
- Circus must park in 4km pit

Spur 7 Beach

Location – 9 km point on Seymour Mainline (end of Seymour Valley Trailway).

****This site is unavailable for filming during Pink Salmon spawning –Sept & October of odd years (2015, 2017 etc) – see the MV LSCR Foreman for more details**

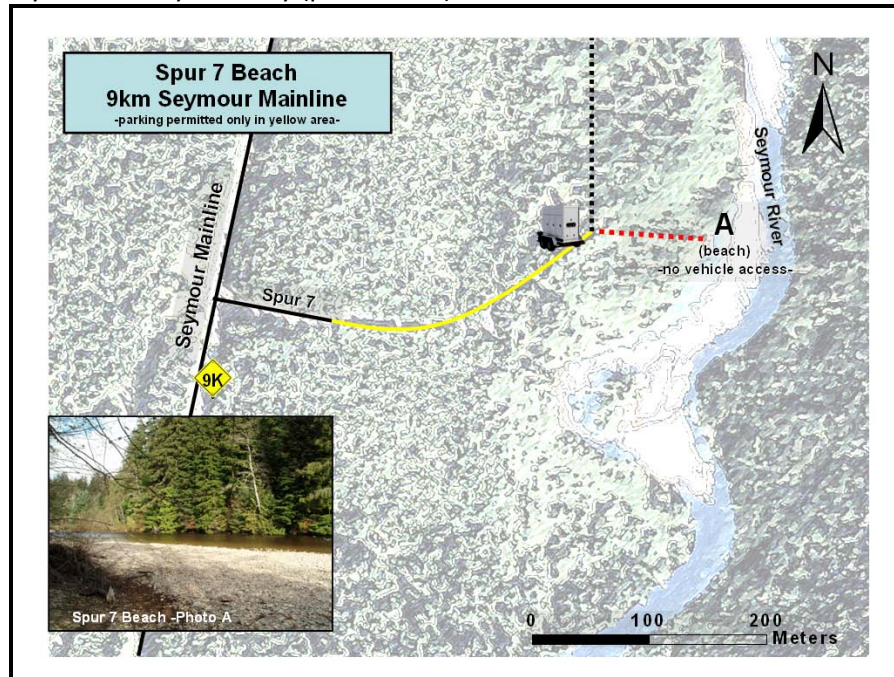
****All significant work done in the water may require separate approval from Fisheries and Oceans Canada - contact number at end**

****No liquid explosions allowed – propane gas only**

****No gunfire of any type during the bird nesting window (March 1st to August 31st)**

There are 2 main areas that make up the Spur 7 Site

1. Beach
2. Seymour Valley Trailway (paved road)



- Beach
 - No liquid fuel explosions allowed, explosions must be propane or black powder only
 - All explosions must be complete burns i.e. no materials or objects can be scattered from the explosion as clean up is too difficult
 - No mechanized vehicles and/or motors permitted past asphalt
 - All generators must be parked on pavement
- SVT (paved road)
 - All vehicles must be parked on pavement-no access beyond
 - Parking of vehicles from bottom of hill to end of pavement along Trailway only. No parking along hill down from Seymour mainline. Any overflow vehicles must be parked north or south of the intersection along the Seymour Mainline.
 - Parking along gravel road to Old Growth Trail is not permitted
- Special Considerations
 - Loud noises from gunfire and explosions will be subject to seasonal scrutiny due to nearby raptor nests. No loud noises during the nesting window Marc 1st to Aug 31st
 - Seasonally high public use area – pedestrian access through the site must be maintained at all times

Seymour Valley Trailway (SVT)

- No filming permitted on SVT between March 1st – September 30th due to high public use
- Additional on set signage and barricades will be required during prep and shoot
- PA escorts must be present to get public through high activity areas
- Cable runs across Trailway must be minimized through specific generator parking sites – discuss with MV liaison. All cable runs must be clearly marked.

Mainline

Location – 0km to 9km

Driving scenes are permitted along the Seymour Mainline. Special attention must be paid to the route of the Seymour water main and speeds must be reduced near chamber locations.

- Intermittent closures are allowed with a **maximum delay of 3 minutes.**
- Full lock-ups are not permitted – access for emergency vehicles must be maintained at all times.
- No crash scenes will be permitted near the Seymour water main
- All fencing and gates in this area can be removed and re-installed by a professional fencing company
- Signage and barriers can be moved, but must be replaced in exact locations and checked by MV liaison
- All work truck must park on east side of road and circus in 4km pit
- Filming is not permitted north of 9km with the exception of the Seymour Salmonid Society Hatchery. Some exceptions apply; must get LSCR Foreman approval

Metro Vancouver supports the BC Film Commission's Reel Green BC initiative to promote positive environmental practices in BC's film and television production industry.

For more information on what departments can do to be part of the solution, please visit <http://www.creativebc.com/industry-sectors/motion-picture/reel-green/>