



Preserve • Restore • Protect

# Metro Vancouver Regional Parks Committee

Burnaby Lake Park Association

July 13, 2022

# Who we are

The Burnaby Lake Park Association (BLPA) is made up of a volunteer Board of Directors, a contracted Coordinator, Members, and a legion of volunteers.



# What we do

The BLPA is dedicated to **preserving, restoring, and protecting** the Park's natural environment through:

- Stewardship
- Education
- Connecting Community





# Stewardship: Weedbusters

**BLPA Weedbusters started in 2004**

## Wanted: weed busters

### **Non-native plant removal volunteer work party at Burnaby Lake, Oct. 17**

There is an increasing public awareness of the problems created by invasive species. Do your part to control the invasion of non-native plants at an upcoming Weed Busters Work Party in Burnaby Lake Regional Park on Oct. 17th from 1 to 4 p.m.

Tools supplied. Wear sturdy shoes, long pants and sleeves, and bring drinking water.

Head out with pruners and loppers to cut, twist and pull ivy from the forest floor. Thick masses of ivy on the ground are preventing young trees and shrubs from sprouting, virtually eliminating native ground covers in some areas.

As ivy climbs trees, its weight increases

the likelihood of blow-down and of branches breaking during windstorms. Over time, the strong tendrils can strangle trees, reducing their normal lifespan.

After the work party, you are invited to join Weed Busters and learn more about becoming a steward of Burnaby Lake through invasive species mapping, site adoption and monitoring.

Weed Busters is a program sponsored by GVRD Parks and the Burnaby Lake Park Association with the goal of protecting biodiversity at Burnaby Lake Regional Park.

For the work party, meet at the Freeway Trail entrance (just past Wildlife Rescue) on the south side of the lake.

For more information or to register large groups, call Karin at 604-520-6442.

Details about Weed Busters are available in the Regional Parks section of the GVRD website at [www.gvr.bc.ca](http://www.gvr.bc.ca).

# Weedbusters






# New Stewardship activities







# Nestbox monitoring



BurnabyLakePark.ca  
@BurnabyLakePark

In 2021, the BLPA hosted:

		
6	53	180
work parties	volunteers	hours



BurnabyLakePark.ca  
@BurnabyLakePark

So far in 2022:

		
4	38	120
work parties	volunteers	hours

# Expanding bird programs



## Project NestWatch data sheet



Use this sheet to record your nest check data and information about the nest site and habitat. See the Code Sheet (Advanced or Simplified) for a list of available codes. Remember to use a separate sheet for each nesting attempt that you monitor. Enter your data online at [www.birdscanada.org/birdmon/pnw/main.jsp](http://www.birdscanada.org/birdmon/pnw/main.jsp).

### GENERAL INFORMATION

Bird species name: \_\_\_\_\_ Nest label: \_\_\_\_\_  
 Observer's name: \_\_\_\_\_ Year: \_\_\_\_\_ Province: \_\_\_\_\_

### NEST LOCATION





# Bird Programs



Preserve • Restore • Protect

## BIRD IDENTIFICATION

In order to be able to look up a bird, take note of these 5 things:

### 1. WHERE did you see it?



### 2. WHEN did you see it?



### 3. What SIZE was it?



Chickadee, Robin, Crow, Goose - in between these sizes or larger?

### 4. What were the main COLOUR(S)?



### 5. Was the bird...?

- Eating at a feeder
- Swimming or wading
- On the ground
- In trees or bushes
- On a fence or wire
- Soaring or flying

With this information, you will be able to go to a guidebook, the internet or an app, and use the details to help you identify the bird you saw.

\*Adapted from the Merlin Bird ID app from The Cornell Lab of Ornithology

[www.BurnabyLakePark.ca](http://www.BurnabyLakePark.ca)

[info@BurnabyLakePark.ca](mailto:info@BurnabyLakePark.ca)

[f](https://www.facebook.com/BurnabyLakePark) [@BurnabyLakePark](https://www.instagram.com/BurnabyLakePark)

	
Mallard Canard Colvert 绿头鸭 Anade Azulón મેલરુડ	American Wigeon Canard d'Amérique 綠眉鴨 Silbón Americano અમેરિકન રાંસન
	
Green-winged Teal Sarcelle d'hiver 綠翅鴨 Cerceta común ગ્રીન-વિંગડ ટીલ	Bufflehead Petit Garrot 白枕鴨 Porrón Albeola મેલરુડ
	
Great Blue Heron Grand Héron 大藍鸞 Garza Azulada ગ્રીન-વિંગડ ટીલ	Bald Eagle Pygargue à tête blanche 白头海雕 Pigargo Americano મરુડ ટીલ
	
Red-tailed Hawk Buse à queue rousse 紅尾鵟 Busardo Colirrojo રેડ ટેઇલ્ડ હાવ્ક	Glaucous-winged Gull Goéland à ailes grises 灰翅鸚 Gaviota de Bering ગ્રેવિયોટા ડે બેરિંગ



# Outreach & Education

## GARDENING FOR BIRDS

### Strait of Georgia/Puget Sound Lowland Forests

**Why should you garden for birds?**

Our natural landscapes have been changed dramatically by human activity. With increasing urbanization, development, and industrial pressure, we are losing and fragmenting the habitat that wildlife, including birds, need to survive. What's exciting is that you can use your yard or property to help bring back habitat for birds.

Gardening is an excellent way to have your property become a home for birds and other wildlife. By providing food, water, and shelter, you can help birds thrive throughout the year. Some bird species that visit your garden may be migrants, stopping by on their flights to and from northern Canada. Others may be year-round residents, winter visitors, or local breeders. By providing a place for them to refuel, nest, forage, or simply rest, you can help birds in all sorts of ways.

This factsheet provides some ideas for plants to include in your garden to help birds. It is tailored to your specific region – what we are calling your “Bird Garden Zone.” Bird Garden Zones combine factors like major habitat types, geography, and climate to help you determine the best plants to use in your area to help birds.

You can find more information about helping birds and creating a custom garden plant list by visiting [BirdGardens.ca](http://BirdGardens.ca).

**What should you consider when gardening for birds?**

When creating a plan for your garden, think about designing a space that provides birds with crucial, life-saving resources year-round – think food, water, and shelter. Incorporate native species (trees, shrubs, herbs, and vines that naturally occur in your region) into your existing garden and increase the structural diversity of your yard. Areas with dense shrubs can be complemented by more open areas. Taller or more hidden perching or nesting spots in trees can provide safety from predators. Water features can give birds a chance to rehydrate or bathe. Try to provide different food sources, such as seeds and berries, or flowers that attract insects. Think about what your garden can offer in each season, whether it's shelter during spring migration or food sources in the fall and winter. You might even work with your neighbours to make your local habitat patch as large as possible!

**Strait of Georgia/Puget Sound Lowland Forests (Zone 4)**

This coastal zone is characterized by a Mediterranean-like climate with mild, wet winters and warm, dry summers. Forest cover is predominately evergreen, including many broad-leaved and coniferous species. Drier sites support rare Garry Oak woodlands, primarily along Vancouver Island's southeast coast.

[BirdsCanada.org](http://BirdsCanada.org)

Strait of Georgia/Puget Sound Lowland Forests

## HOMES SAFE FOR BIRDS

**Windows are everywhere –** in our houses, cottages, condos, apartments, even balconies. Unfortunately, birds make their homes in woods or wetlands, not in glass. This is true for tiny songbirds and thousands of other birds that live throughout our towns, cities, and suburbs.

**Windows deceive birds.** Trees or sky reflected in a windowpane or a glass/plexiglass railing, a tempting potted plant behind a window, or glass walls on either side of a building all appear to offer unobstructed flight. Many birds die on impact. Those that appear just stunned can easily fall prey to roaming cats or other predators. Birds that manage to fly away can still have severe internal injuries. In short, bird-window collisions are a major cause of bird mortality and up to 99% of all collisions happen at our homes. They cannot be dismissed as random occurrences.

**Keep cats indoors to protect birds, wildlife and people.**



# Outreach & Education





# Workshops

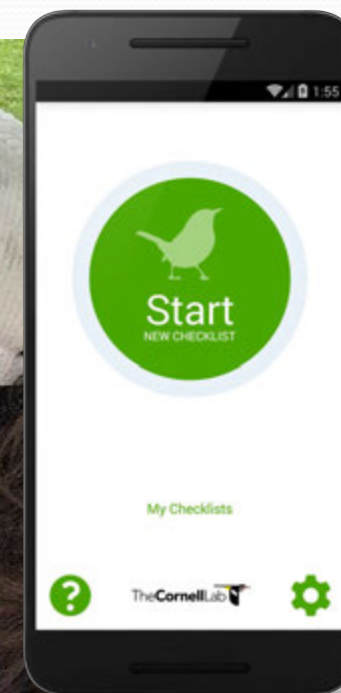
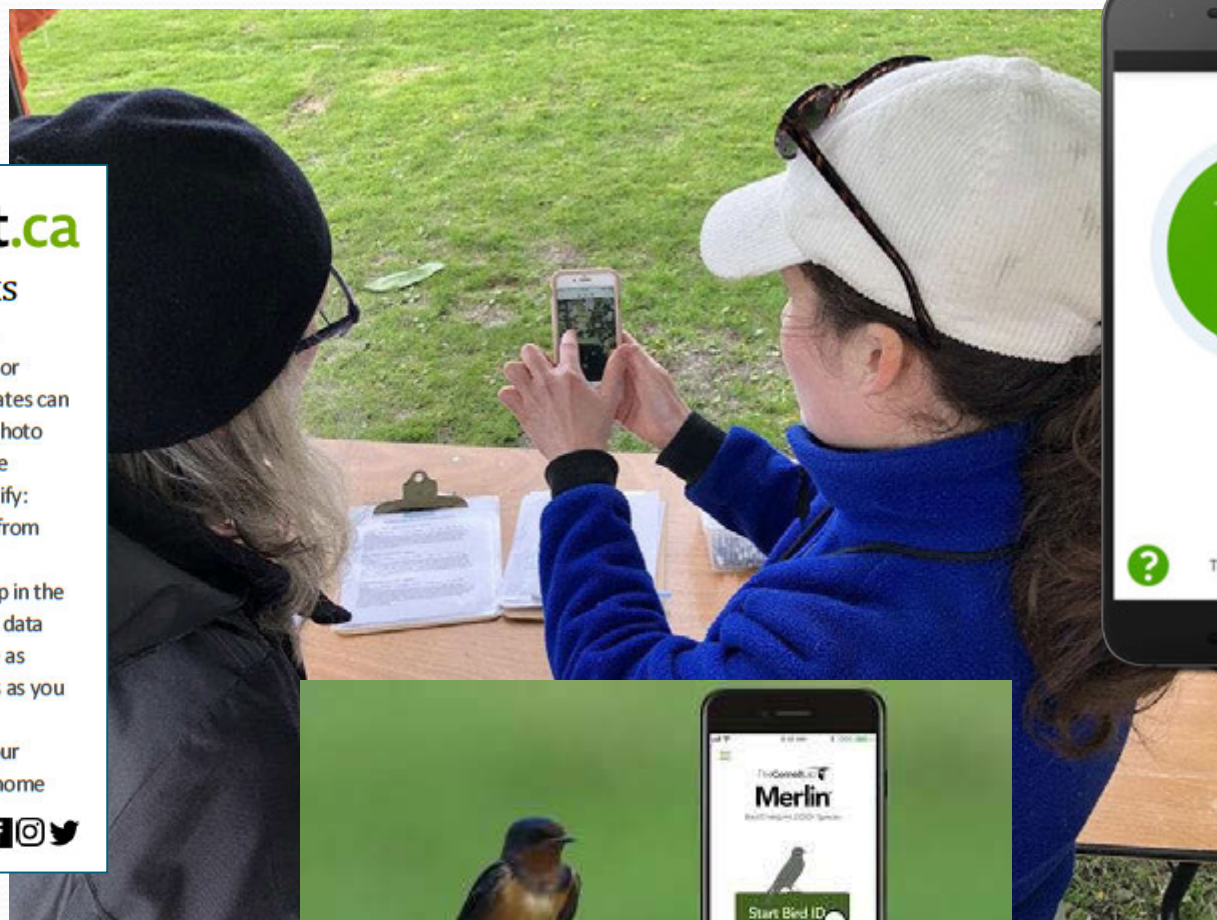
## iNaturalist.ca

### Tips & Tricks

- Turn on the GPS location function for your camera or mobile device so coordinates can be embedded into your photo
- Take several images of the species you want to identify: flower, berry, leaf, stem, from the top or underneath
- While you can use the app in the park, it can take time and data
- We recommend you take as many photo observations as you can while in the park
- Upload your photos to your computer when you get home



@BurnabyLakePark







# Connected community

## BIRDS OF BURNABY LAKE

### Burnaby Lake Park Association

@BurnabyLakePark

**Burnaby Lake Park Association**  
856  
Facebook Page followers

### Burnaby Lake Park

@BurnabyLakePark

Dedicated to preserve, restore & promote the Park's natural environment; advocate respect, appreciation & enjoyment of its natural attributes/recreational resources

© Burnaby, BC [burnabylakepark.ca](http://burnabylakepark.ca)  
Joined June 2010

1,151 Following 1,586 Followers

**Tweets** Tweets & replies Media Likes

**Burnaby Lake Park** @BurnabyL... · 7h ...  
MV Regional Parks Intepreters lead a monthly Piper Spit Bird Count. Whether you're getting to know birds in your park or on the lookout for rarities grab your binocs & watch seasonal changes of birds at #BurnabyLake Jul 12, 9-11AM. 15+, FREE. Register:

**573** Posts **1,560** Followers **501** Following

**Burnaby Lake Park Association**  
Environmental conservation organisation  
Dedicated to preserve, restore & protect the Park's natural environment; advocate respect, appreciation & enjoyment of its natural attributes & resources  
[linktr.ee/BurnabyLakePark](http://linktr.ee/BurnabyLakePark)  
9146 Avalon Ave., Burnaby, British Columbia

Followed by whatsonburnaby and i\_on\_food\_drink

**Follow** **Message**



# Building Community





# A formula for success





# THANK YOU



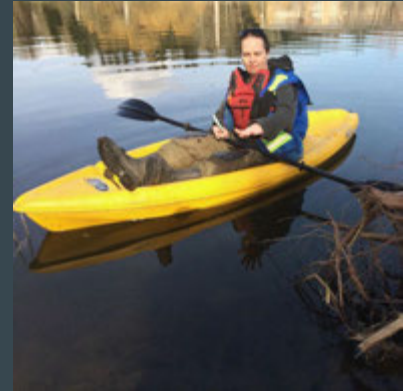
Preserve • Restore • Protect

Connect with us!    @BurnabyLakePark





# Colony Farm Park Association

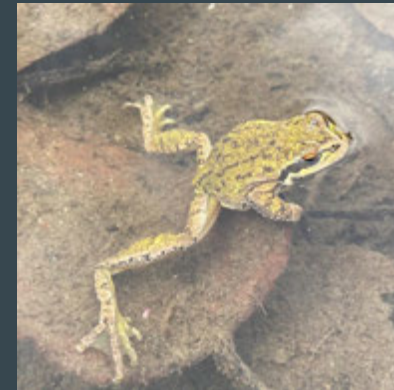


● ● ●  
Presentation



## Sheep Paddocks Trail Wetland Stewardship

- Colony Farm Park Association ran volunteer stewardship events and a citizen science monitoring program around the newly built wetland on the Sheep Paddocks trail.
- With the help of a volunteer team, CFPA monitored birds, amphibians, fish, water quality, and invasive species in and around the Sheep Paddocks wetlands.
- CFPA volunteers also helped maintain and enhance the habitat around the wetlands, removing invasive plant species and protecting the new wetland plantings. The new wetland site is being considered for potential Western Painted Turtle recovery efforts.
- CFPA monitored water quality this year to ensure it is acceptable for the release of juvenile turtles and kept the turtle nesting beach clear of vegetation.
- CFPA also monitored invasives at the older wetlands along the Sheep Paddocks trail to prevent re-colonization of invasive plant species and overseeded the wildflower meadow with a native seed mix, pull Red Alder around the new wetland plantings.



*Photo Credit:  
Maddie Edmonds*



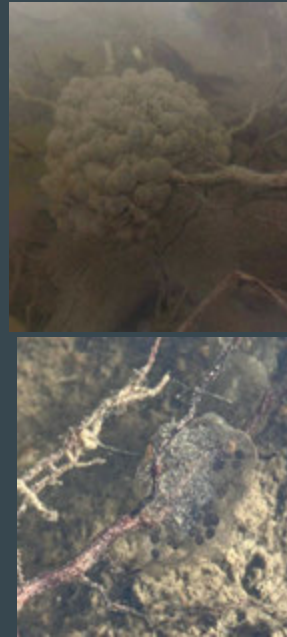
# Ecoblitz

In October CFPA participated in the Regional Parks EcoBlitz, with 2 native planting events to fill in gaps where shrubs had failed in the initial plantings around the wetland. Over 2 weekends, we planted 446 1-gallon pots - the species were Nootka Rose, Baldhip Rose, Nodding Onion, Dull Oregon-grape, Salal, and Red Elderberry.



## Amphibian Surveys & Branch installation

CFPA installed branches along the wetland edge for native amphibians to attach their egg masses to. We followed up with an egg mass surveys to monitor usage.



## Turtle survey

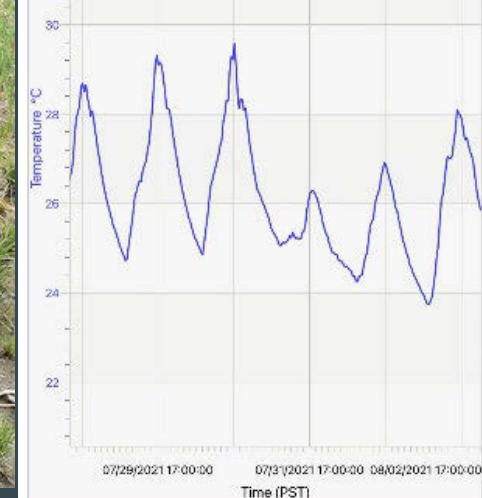
CFPA completed a turtle survey of the sloughs and wetlands. While the result was a single red-eared slider (an introduced species) the survey gives a good baseline for future years, when juvenile western painted turtles are released.





# Water Quality & Temperature Monitoring

CFPA set up HOBO data loggers to continuously monitor temperature in all 3 Sheep Paddocks wetlands, and continued to measure water quality parameters thanks to funding from the George Ross Legacy Stewardship Program grant through the Pacific Parklands Foundation.



# Bat Monitoring

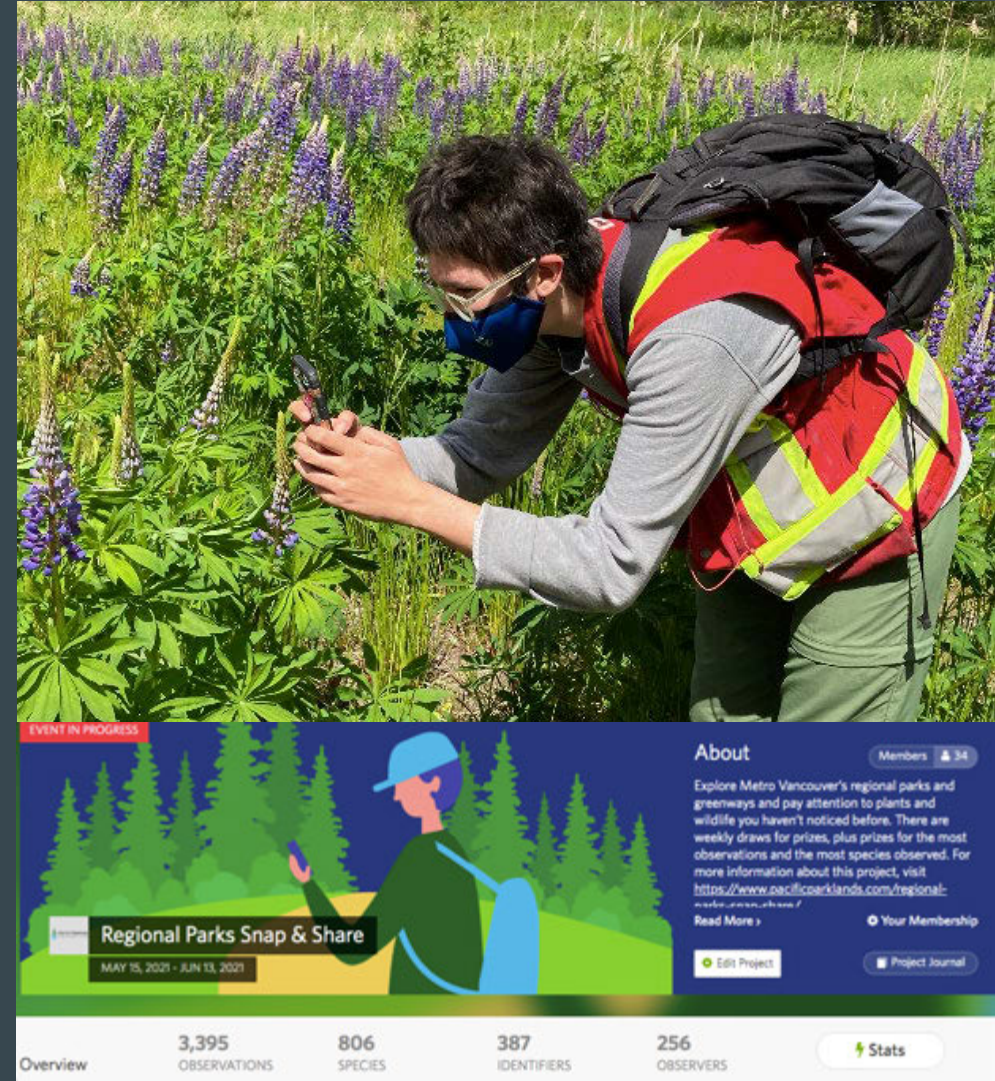
- In 2021, CFPA took over the Annual Bat Count program at the park and trained a group of volunteers to help monitor the bats using the bat boxes, heritage buildings, and the bat condo installed by the Burke Mountain Naturalists.
- CFPA collaborated with Minnekhada Park Association and the Pacific Parklands Foundation to host a free virtual presentation on BC bats by BC Community Bat Count Coordinators. This was an opportunity to raise public awareness about BC bats, their biology, life cycle, threats, and the BC Annual Bat Count. Volunteers were involved in bat counts in June to count the bats using the maternity roost before pups were born, then in July to check on numbers when pups are flying.





# iNaturalist

- To document wildlife and plant sightings, CFPA promoted the citizen science app iNaturalist. iNaturalist helps build nature knowledge and involves park users in a global community of citizen scientists, contributing to biodiversity science.
- CFPA collaborated with the other park associations to host the Regional Parks Snap & Share event from May 15 to June 13! Snap & Share encouraged people to get out to explore Metro Vancouver's regional parks and greenways and experience them in new ways.
- CFPA encourages park users to continue contributing to the Colony Farm Project any time throughout the year.



# Oregon Forest Snail

CFPA encouraged park users to help track the population of endangered Oregon Forest snails in the nettle patches along Mundy Creek Trail by counting snails (and helping any rogue snails across the trail).





# Nature Ambassador Program

CFPA updated our display material and piloted pop-up nature tables in the park with interactive displays. This is an ongoing initiative to form a Park Ambassador program, and have more presence in the park.



# Thank you!!

The grant we received assisted the CFPa to achieve our environmental education and outreach objectives in 2021, and to undertake new stewardship initiatives, such as wetland enhancement, invasive plant removal, native plantings, and tree protection.

In 2021, we had 35 volunteer stewardship activities with 126 volunteer instances contributing 260 stewardship volunteer hours. In addition to monitoring and invasive species removal activities, 645 native species were planted in 2021.

An additional 51 volunteer instances contributed 92 volunteer hours toward other park association activities including public awareness and education. The lower volunteer hours in 2020 and 2021 reflect the impacts of the pandemic, but the smaller number of deeply engaged volunteers has accomplished a lot to support protecting the park's ecosystems and connecting people to the park and nature.



Photo Credit: Derek Moore





Pacific Spirit Regional Park

# Regional Parks Plan 2022

## FINAL PLAN AND ENGAGEMENT SUMMARY

Josephine Clark

Natural Resource Management Planner, Planning and Resource Management

Regional Parks Committee, July 13 2022  
Orbit Link

**metro**vancouver

# PROJECT TIMELINE





# VISION

*Regional parks are protected and resilient,  
connecting people to nature, with benefits for all*



# GOALS



## Goal 1

The region's important natural areas are protected in perpetuity.



## Goal 2

Everyone has the opportunity to benefit from exceptional experiences in nature.



## Goal 3

Regional parks are sustainably managed and well-maintained for the safety of visitors and integrity of ecosystems.



## Goal 4

First Nations have an active role in the planning and stewardship of regional parks.



## Goal 5

Regional parks adapt to change and contribute to regional resilience.

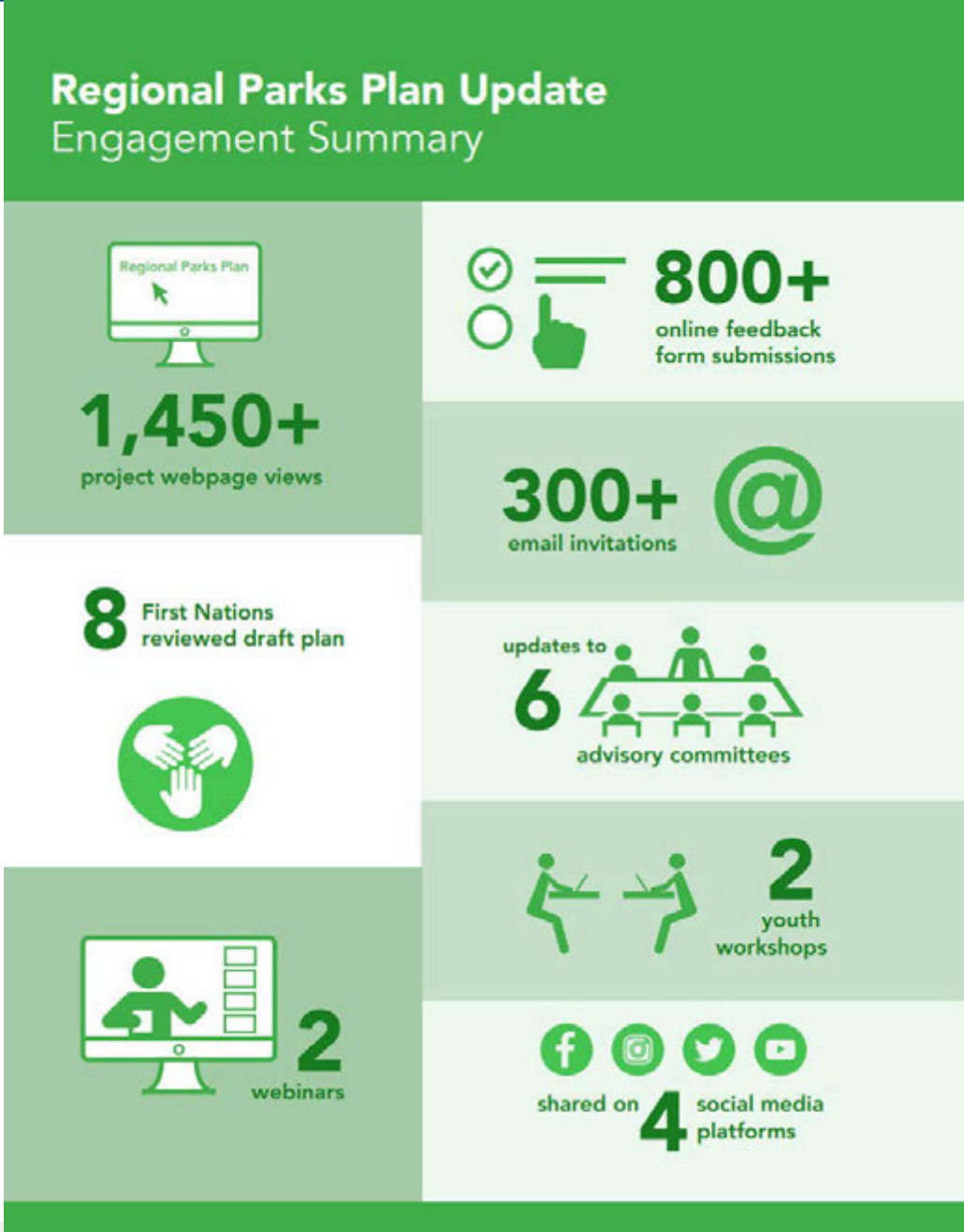


# PROTECT-CONNECT CONTINUUM



# ENGAGEMENT

Feedback on the draft plan was obtained from member jurisdictions, First Nations, other government agencies, community organizations, youth, and the public





# STAKEHOLDER FEEDBACK

- Strong support
- Importance of:
  - Protection and ecosystem connectivity
  - Improving access
- Recognition of role in health and regional resilience





# FIRST NATIONS FEEDBACK

## Key themes:

- Plan framing
- Embedding reconciliation
- Supporting Indigenous stewardship
- Cultural recognition
- Supporting First Nations' connection to the land
- Protecting and monitoring ecosystem health



Campbell Valley Regional Park



# PUBLIC FEEDBACK

- Strong support for expansion of regional parks and greenways
- Discussion around:
  - Balancing protect and connect
  - Importance of enforcement
  - Reducing conflict between user groups



Minnekhada Regional Park

# CAN YOU IMAGINE, IT'S 2050...

- A connected network of regional parks and greenways
- Increased health and resilience of park ecosystems and wildlife
- Strengthened relationships with First Nations
- Balance between protect and connect
- Benefits of nature are accessible to all



Widgeon Marsh Regional Park





Campbell Valley Regional Park



# Questions

**metro**vancouver





Burnaby Lake

# REGIONAL PARKS

## 5.2 – DRAFT 2023-2027 REGIONAL PARKS CAPITAL PLAN

**Mike Redpath**

Director, Regional Parks

**Jeffrey Fitzpatrick**

Division Manager, Regional Parks, Design & Development

Regional Parks Committee | July 13, 2022

53661860

**metro**vancouver



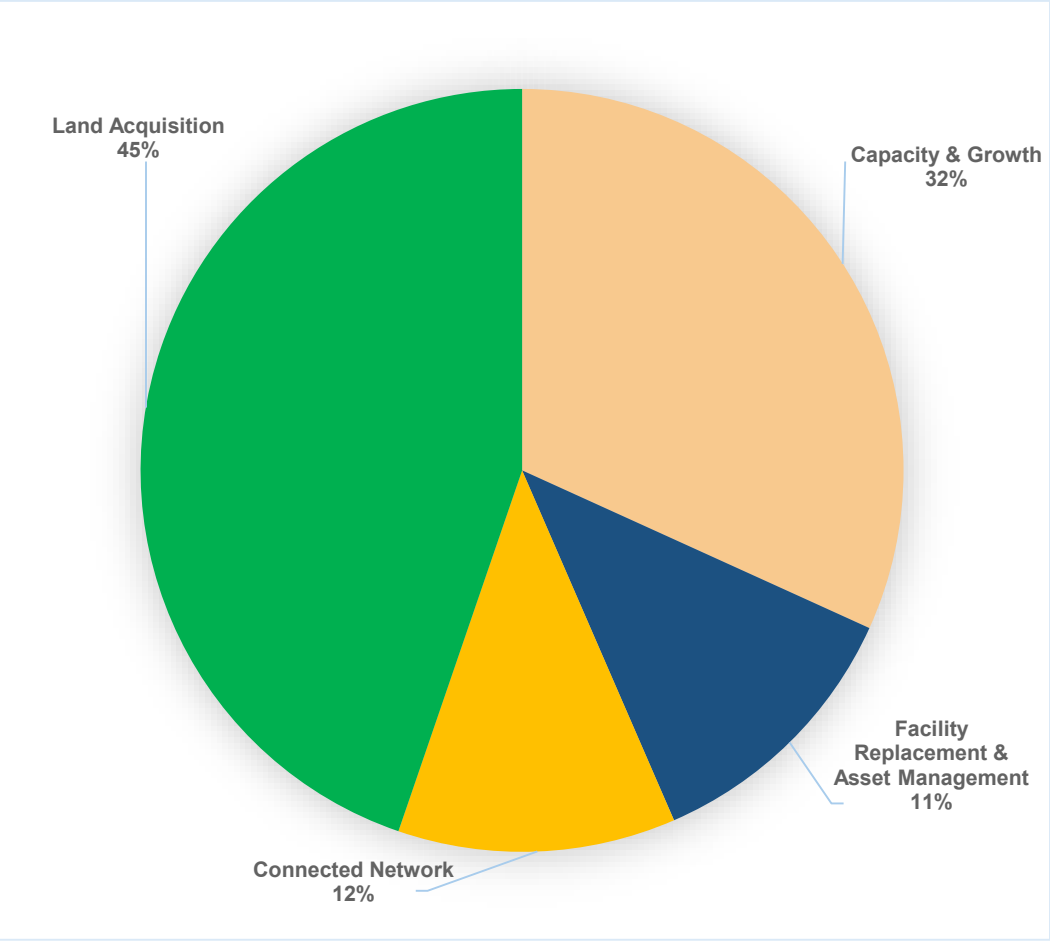
# CUSTOMER LEVEL OF SERVICE OBJECTIVES

1. Expand the Regional Park System to protect natural areas and connect people to nature
2. Develop park amenities to expand capacity and accommodate increased visitation
3. Enhance the resilience of the Regional Park System to climate change and increased visitation
4. Maintain park facilities in a state of good repair to ensure safety and reliability over the long term
5. Work closely with First Nations to advance reconciliation, build and strengthen relationships
6. Expand opportunities to connect with nature to support the mental and physical health of regional residents



# CAPITAL PLAN DRIVERS

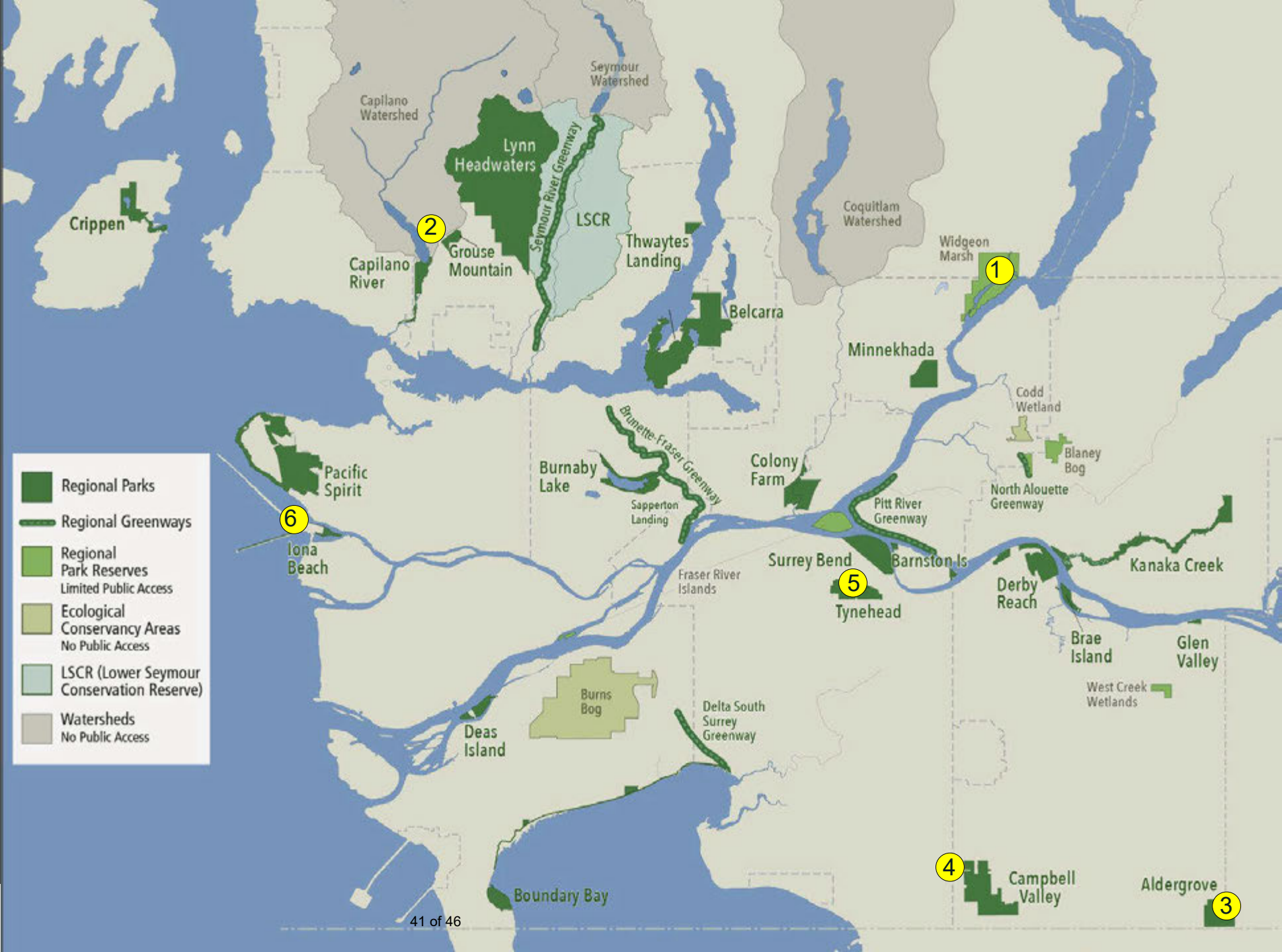
Driver	Outcome	% 2023-2027 Capital Plan
Land Acquisition	Expanding the Regional Park System to protect natural areas and connect people to nature	45%
Capacity, Growth and Ecological Resilience	Developing park amenities to expand capacity and accommodate increased visitation, enhancing ecological function and resilience	32%
Connected Network	Expanding the greenway network to improve connectivity	12%
Facility Replacement and Asset Management	Lifecycle replacement of regional park assets and upgrading, where required, to ensure long term resilience	11%





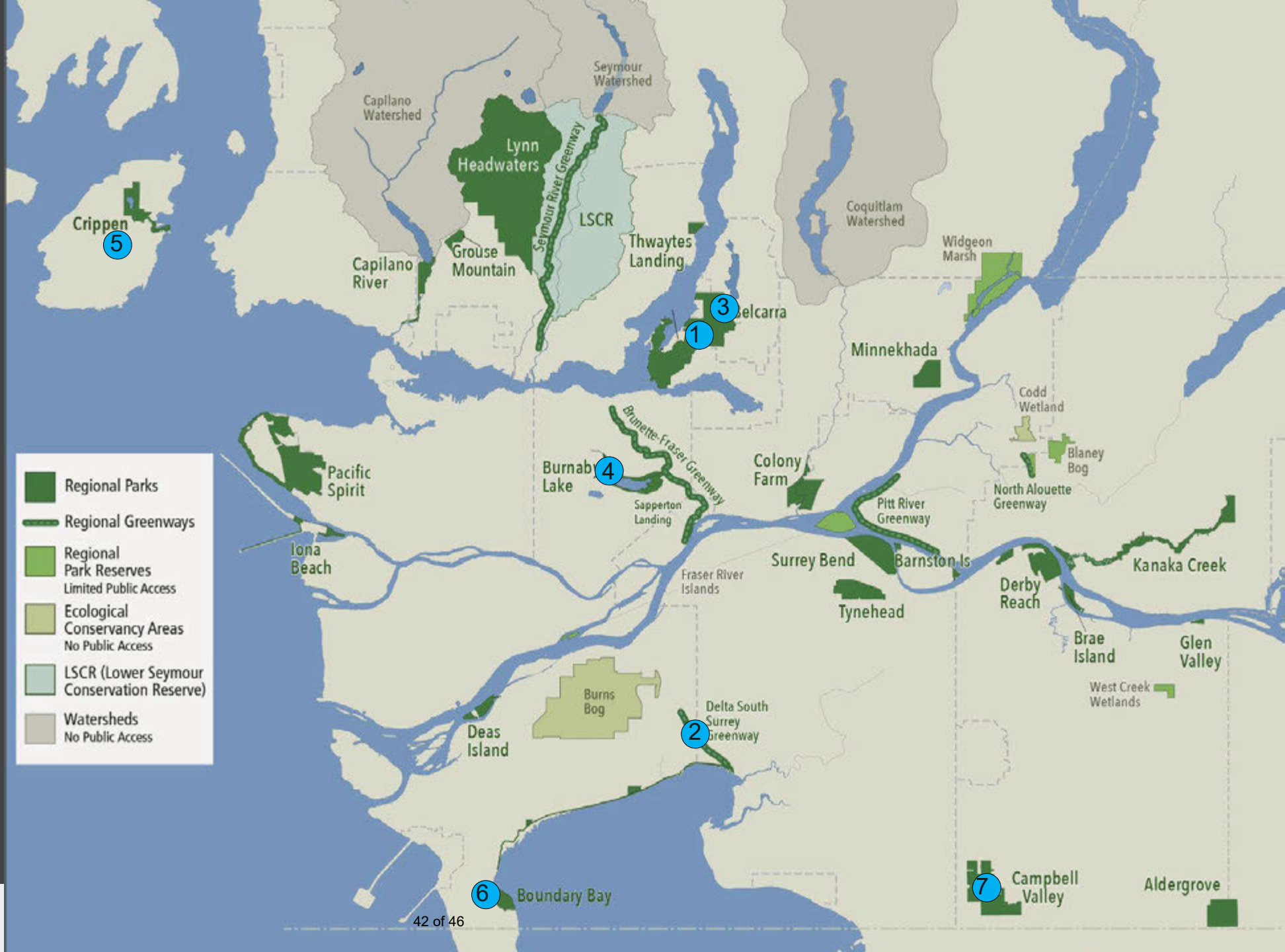
# 2023 Capital Development

- 1. Widgeon Marsh park development  
*(multiyear, \$6,580,000 in 2023)*
- 2. Grouse Mountain Trail and Amenity Improvements  
*(multiyear, \$1,000,000 in 2023)*
- 3. Aldergrove South Slopes Greenway  
*(\$1,250,000 in 2023)*
- 4. Campbell Valley Management Plan Implementation  
*(multiyear, \$1,000,000 in 2023)*
- 5. Tynehead Perimeter Trail  
*(multiyear, \$1,000,000 in 2023)*
- 6. IWWTP - Iona Beach Regional Park  
*(LWS lead, integrated team)*



# 2023 Advanced Design

1. *Belcarra South Day Use Area*
2. *Delta Nature Reserve / Delta South Surrey Greenway*
3. *Admiralty Heights Trails*
4. *Central Valley Greenway Connection*
5. *Bowen Island – New Park Design and Development*
6. *Boundary Bay Perimeter Trail*
7. *Campbell Valley Little River Loop*





# REGIONAL PARKS

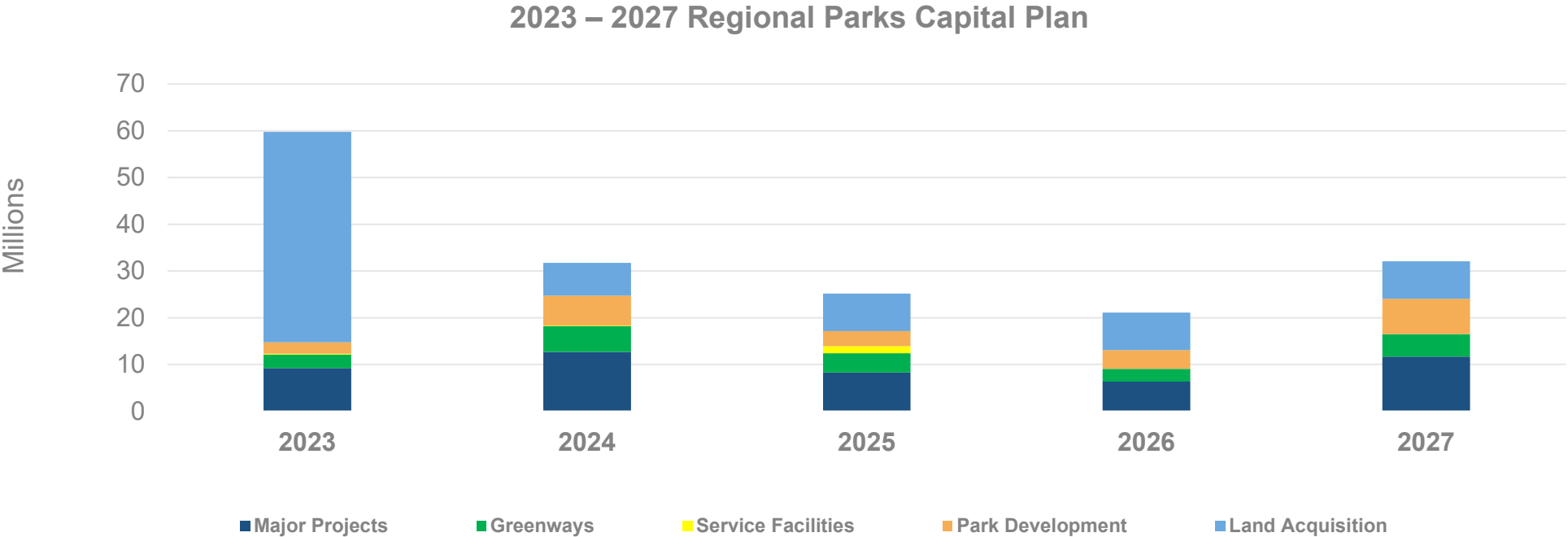
## 2023-2027 CAPITAL PLAN EXPENDITURES

### Overview:

- 2023-2027 Capital Plan: \$169.8M
- 2023 cash flow: \$59.8M

### Drivers:

- Capacity, Growth & Ecological Resilience
- Facility Replacement & Asset Management
- Connected Network
- Land Acquisition



# PROPOSED CAPITAL PLAN CHANGES

(\$ Millions)

Prior Cycle Cash flow 2022-2026	Cashflow 2022	Adjustments to 2023-2026 Capital Plan					Cash flow 2027	Draft Capital Plan 2023-2027
		Carry- Forward	Net Deferrals	Cost Adjustments	New Scope	Total		
156.5	(31.3)	-	(1.3)	-	13.8	12.5	32.1	169.8

- New park design and development



# NEXT STEPS

- Finalize Regional Parks Capital Plan
- Finalize Regional Park Budget
- Fall 2022 Committee and Board budget presentations



First Nation Drum – Heather Place Opening

# Thank you

**metro**vancouver  
Together we make our region strong