



# Capital Expenditure Summary Update

AUGUST 31, 2020

Colin Meldrum

DIRECTOR, ENGINEERING, DESIGN & CONSTRUCTION,  
LIQUID WASTE SERVICES

Liquid Waste Committee – November 12, 2020

40731027

Liquid Waste Committee



**metrovan**couver  
SERVICES AND SOLUTIONS FOR A LIVABLE REGION

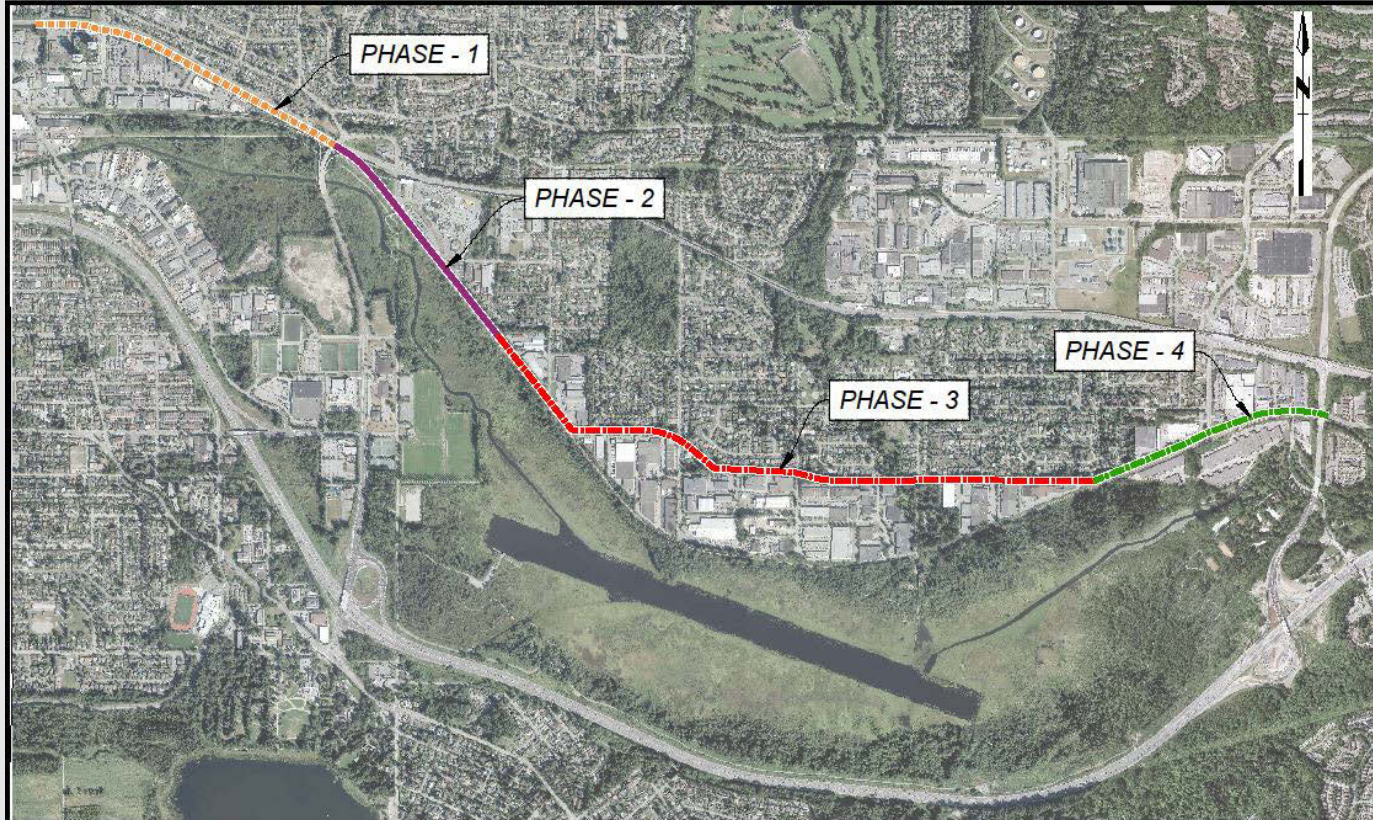
# Status of Capital Expenditure Program

- 2020 Capital Budget of \$883M
- As of the end of August, expenditures are \$270M
- 127 active projects
- Projecting to spend approximately 74% of budget

# Selected Project Updates (Liquid Waste Services)

- Attachment 3: Project Status Information
  - Burnaby Lake North Interceptor – Burnaby
  - Highbury Interceptor Junction Chamber – Vancouver
  - Annacis Island WWTP Secondary Clarifiers – Delta
  - NWL Program – Maple Ridge and Township of Langley





# Burnaby Lake North Interceptor – Burnaby

Liquid Waste Committee





# Burnaby Lake North Interceptor – (cont'd)

Liquid Waste Committee



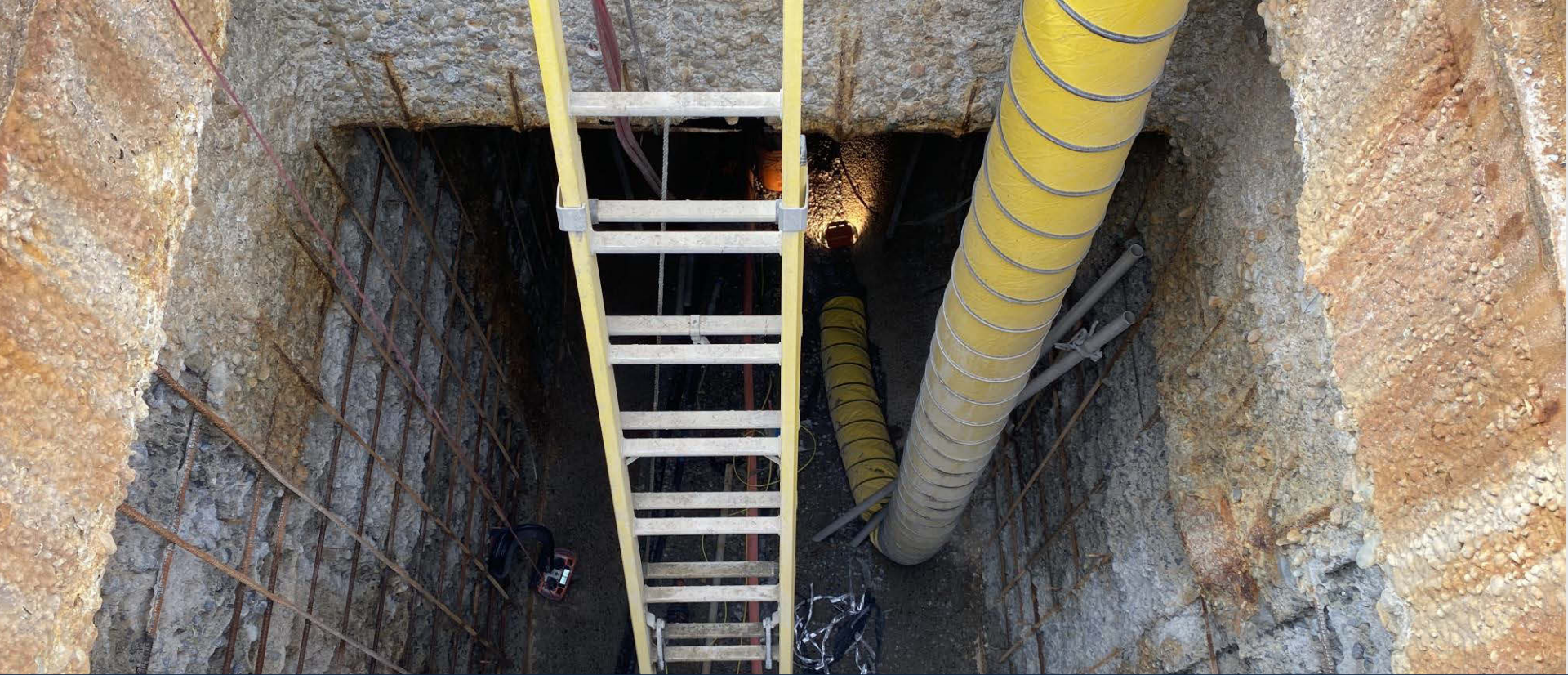


# Highbury Junction Chamber – Vancouver



## Highbury Junction Chamber – (cont'd)





# Highbury Junction Chamber – (cont'd)

Liquid Waste Committee





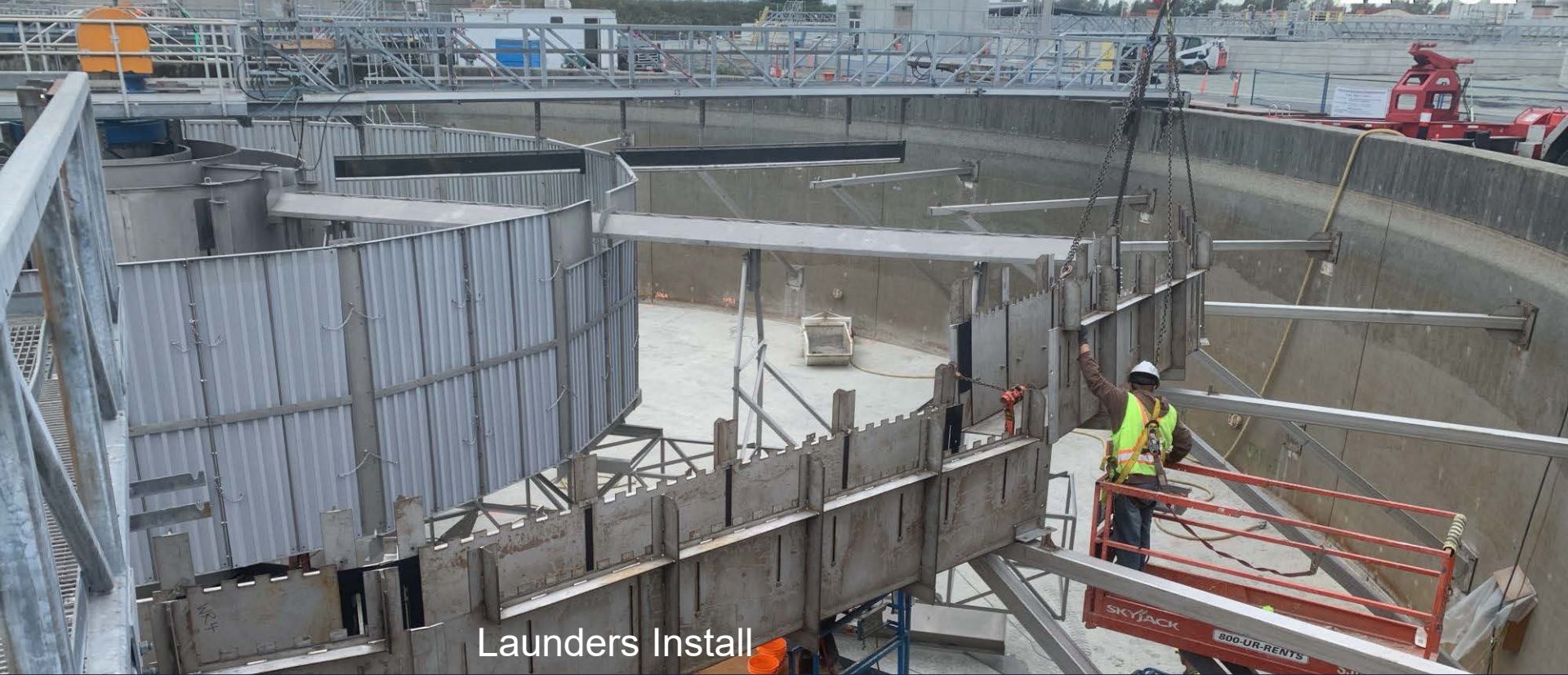
## Highbury Junction Chamber – (cont'd)



# Annacis Island WWTP Secondary Clarifiers – Delta

Liquid Waste Committee





Launders Install

# Annacis Island WWTTP Secondary Clarifiers – (cont'd)



**Treatment Plant  
Expansion**

**New Outfall**

**River  
Crossing**

**Pump Station  
and Storage Tank**

# Northwest Langley Program

Liquid Waste Committee





# NWL Program Construction Progress

Liquid Waste Committee



Thank you

Liquid Waste Committee



**metrovancouver**  
SERVICES AND SOLUTIONS FOR A LIVABLE REGION



# Metro Vancouver's Real-Time Sewer Overflow Map

## DEMONSTRATION

**Andjela Knezevic-Stevanovic**

DIRECTOR, ENVIRONMENTAL MANAGEMENT AND QUALITY CONTROL  
LIQUID WASTE SERVICES

Liquid Waste Committee - November 12, 2020

41966348

Liquid Waste Committee



**metrovancouver**  
SERVICES AND SOLUTIONS FOR A LIVABLE REGION

# Real-Time Sewer Overflow Map Webpage

Live Chat 604.432.6200 Email Metrotower III, 4730 Kingsway, Burnaby, BC V5H 0C6

Facebook Twitter YouTube Instagram Careers

metrovancover

SERVICES • BOARDS • MEDIA ROOM • EVENTS • DOING BUSINESS • ABOUT US •

## Real-time sewer overflow map

Search metrovancover.org...



Home > Services > Liquid Waste > Environmental Management > Sewer Overflows > Real-time sewer overflow map

Untreated wastewater can sometimes be discharged to waterways when sewers overflow due to heavy rainfall or other emergencies. Metro Vancouver provides real-time information about these overflows so that you can make informed decisions about your activities near the areas where these events occur.

[Learn more about sewer overflows](#) and what Metro Vancouver and municipalities are doing to prevent them.

### OverflowMap

The map shows overflows that have occurred in the last 48 hours, within the wastewater system operated by Metro Vancouver.

Open OverflowMap



### What information does the map include?

The map identifies two types of sewer overflows:

- sanitary sewer overflows into water bodies and on land (sanitary sewers collect anything that is flushed down a toilet or emptied down a drain in homes and businesses)
- treatment interruptions at wastewater treatment plants, where wastewater has been released before the treatment process has been fully completed (discharged wastewater may not fully meet regulatory requirements)

### SIGN UP FOR NOTIFICATIONS

To receive notifications when overflows occur, sign up below.

\*E-mail

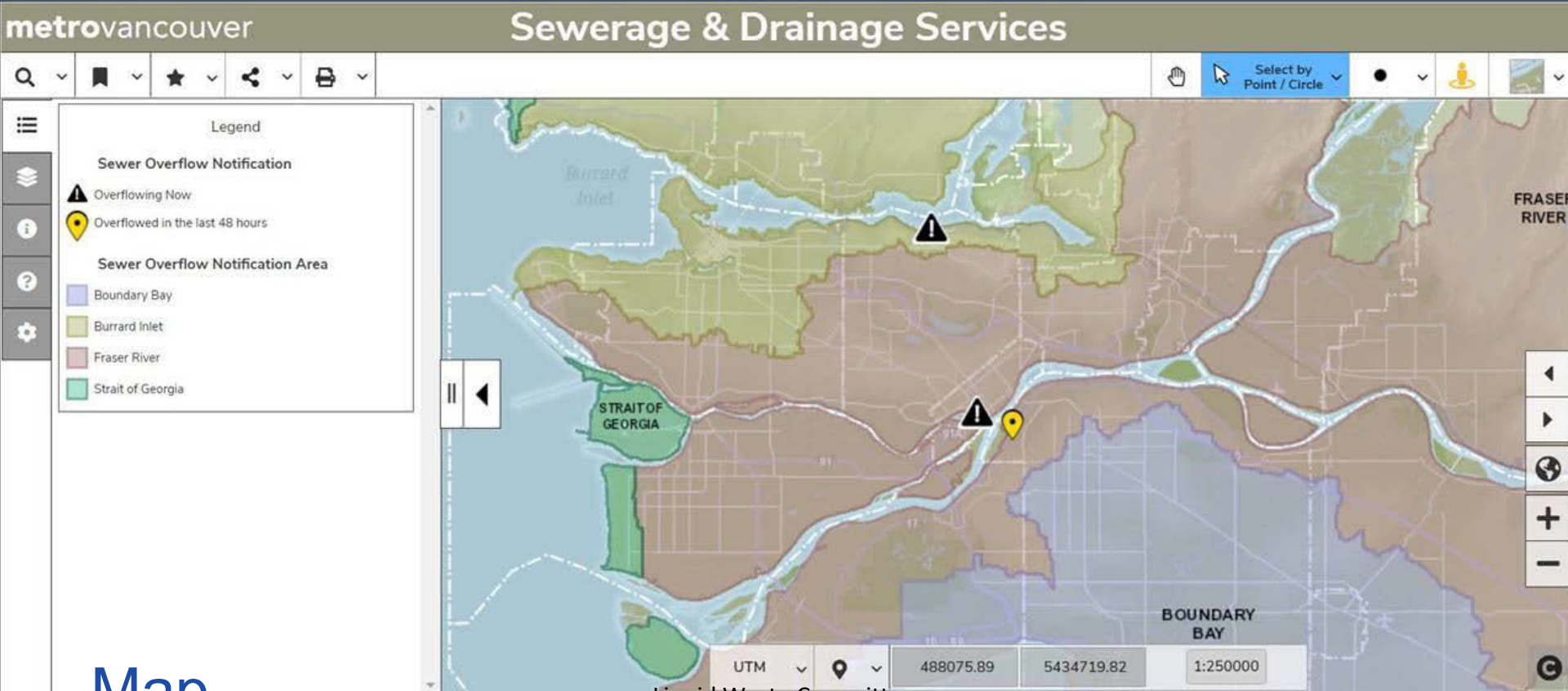
First Name

Last Name

Subscribe



# Real-Time Sewer Overflow Map



Map

Liquid Waste Committee



# Questions?







# 2020 Unflushables Campaign Results

**Larina Lopez**

DIVISION MANAGER, CORPORATE COMMUNICATIONS  
EXTERNAL RELATIONS DEPARTMENT

Liquid Waste Committee - November 12, 2020

42150894

**Carol Nicolls**

COMMUNICATIONS SPECIALIST, CORPORATE COMMUNICATIONS  
EXTERNAL RELATIONS DEPARTMENT

Liquid Waste Committee



**metrovancouver**  
SERVICES AND SOLUTIONS FOR A LIVABLE REGION

# Campaign approach

## Phase 1 (Mar 16–Aug 9)

- Extra focus on wipes and paper towels
- ‘In home’ tactics: social media, digital, TV
- Out-of-home: elevators, medical offices, hair salons





# Campaign approach

## Phase 2 (Oct 12–Nov 22)

- Mainly social media & digital
- Facebook, Instagram, YouTube
- Google search, new banner ads
- TV (PSA)



# Results

- 16 media stories
- 651,000 reached via social media
- 22,615 social media engagements
- 2.2 million video views
- 19,385 website visits

News / Local News

## COVID-19: Personal protective equipment clogging Metro Vancouver sewage plant

*The region is urging folks not to flush disposable PPE, including masks, gloves and antibacterial wipes, which are damaging the pumps and putting workers at risk.*

Tiffany Crawford

Jun 10, 2020 • Last Updated 4 months ago • 3 minute read







# Impacts on the system

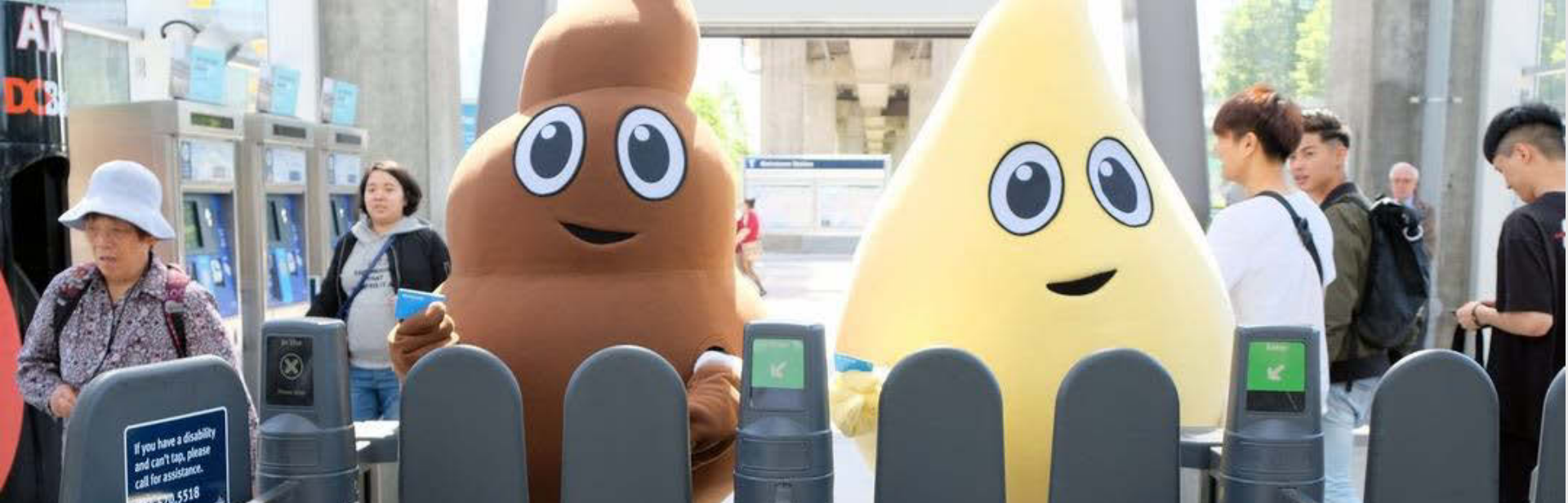
# Plans for 2021

- Continue Unflushables campaign
- Add compounds of environmental concern (CECs)
- Extra focus on certain items









Questions?



**metrovancouver**  
SERVICES AND SOLUTIONS FOR A LIVABLE REGION

Liquid Waste Committee